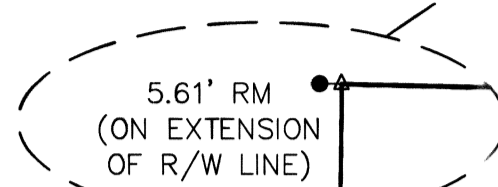


C/L POCAHONTAS ROAD

MAJOR PARTITION PLAT No. P2010-009

A Portion of The West 1/2, NW 1/4 of Section 11, & The East 1/2, NE 1/4 of Section 10, Township 9 South, Range 39 East of the Willamette Meridian, Baker County, Oregon Survey Completed June 21, 2010

LOCATION ESTABLISHED BY DOUBLE PROPORTION FROM ROAD CENTERLINES N, S, E & W CORNER RECORD TO BE FILED



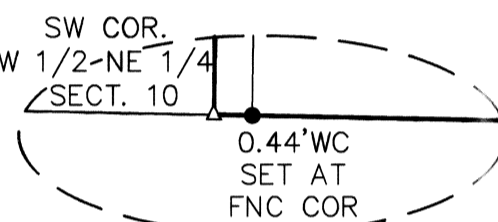
DETAIL: N.T.S

REGISTERED PROFESSIONAL LAND SURVEYOR

Lawrence H. Koerner

OREGON JAN. 29, 2001 LAWRENCE H. KOERNER 04242

7/20/10 EXPIRATION DATE: 6/30/11



DETAIL: N.T.S

C 1/4 CORNER SET BY DOUBLE PROPORTION CORNER RECORD TO BE FILED

9-10 CORNER RECORD 9-39-255

N88°52'51"W 2646.99'

1341.07'

N88°52'51"W 2682.14'

1341.07'

10-11

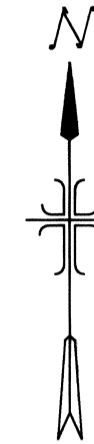
N00°47'24"E 2647.73'

N00°34'19"E 2643.21'

N00°42'18"E 2613.21'

N00°37'10"E 2638.70' (1)

BASIS OF BEARING (1)



SCALE: 1"=400'

LEGEND

- Boundary Line
Section Line
Existing Fence
Found Brass Cap
Found Aluminum Cap
Found 5/8" Iron Pin
Set 5/8" Iron Pin W/Plastic Cap "Koerner LS 64242"
Calculated Point
Reference Monument
Witness Corner

NARRATIVE

I WAS EMPLOYED BY BETTY GREEN TO COMPLETE THE SURVEY REQUIREMENTS OF THIS APPROVED MAJOR PARTITION PLAT. THE RIGHT OF WAYS FOR POCAHONTAS ROAD AND WASHINGTON GULCH ROAD WERE CREATED FROM LOCATING THE CENTERLINES OF BOTH ROADS AND OFFSETTING THEM 30'. THE BOUNDARIES AROUND THE EXCEPTIONS PARCELS (LISTED IN BARGAIN AND SALE DEED B05 26 0370, 0371 & 0372) WERE CREATED FROM THE RECORD INFORMATION IN SAID DEEDS, AND FROM OCCUPATIONS LINES LOCATED IN THE FIELD. THE CENTER QUARTER CORNER FOR SECTION 10 WAS ESTABLISHED BY DOUBLE PROPORTION FROM THE NORTH, SOUTH, EAST & WEST QUARTER CORNERS. THE SOUTH, WEST & EAST QUARTER CORNERS FOR SECTION 10 WERE LOCATED IN THE FIELD. I SET THE NORTH QUARTER CORNER BY DOUBLE PROPORTION BY THE LOCATING OF THE CENTERLINE OF POCAHONTAS ROAD EAST & WEST OF THE CORNER, AND THE CENTERLINE OF ROUEN ROAD RUNNING SOUTH & OLD WING ROAD RUNNING NORTH OF THE CORNER. I ESTABLISHED THE WEST BOUNDARY LINE OF THIS SURVEY ON THE WESTERLY BOUNDARY LINE OF THE EAST 1/2 NE 1/4 OF SECTION 10, AFTER ESTABLISHING THE NORTH-SOUTH CENTER OF SECTION LINE OF SAID SECTION 10..

LINE TABLE

Table with 3 columns: LINE, BEARING, DISTANCE. Contains 27 rows of survey data (L1-L27).

CURVE TABLE

Table with 7 columns: CURVE, RADIUS, DELTA ANGLE, LENGTH, TANGENT, CHORD, CHORD BEARING. Contains 10 rows of curve data (C1-C10).

N00°47'24"E 2625.67'

10-15

CORNER RECORD 9-39-233

Koerner Land Surveying & Planning 2963 W. Fieldstream Dr. Meridian, Idaho 208-830-4168

