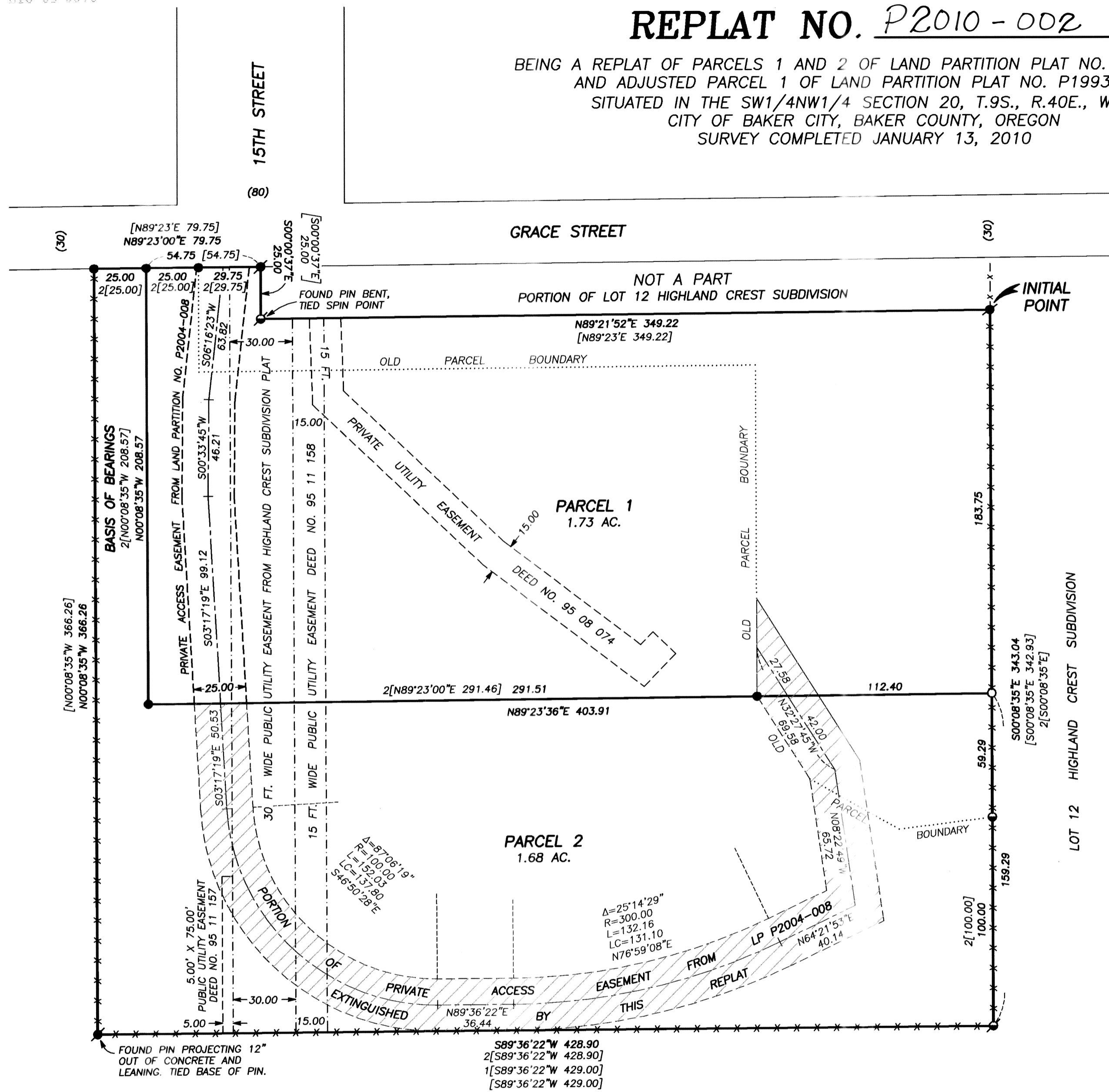


REPLAT NO. P2010-002

BEING A REPLAT OF PARCELS 1 AND 2 OF LAND PARTITION PLAT NO. P2004-008 AND ADJUSTED PARCEL 1 OF LAND PARTITION PLAT NO. P1993-010 SITUATED IN THE SW1/4NW1/4 SECTION 20, T.9S., R.40E., W.M., CITY OF BAKER CITY, BAKER COUNTY, OREGON SURVEY COMPLETED JANUARY 13, 2010



BASIS OF BEARINGS

RECORD LAND PARTITION PLAT NO. P2004-008 AS SHOWN

LEGEND

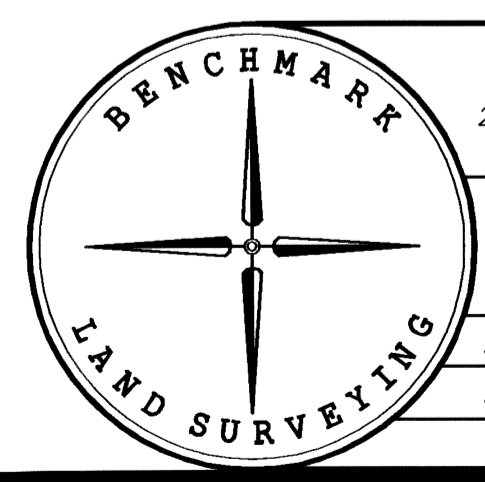
- FOUND 5/8" IRON PIN WITH ATTACHED YELLOW PLASTIC CAP MARKED "HANLEY ENGR PLS 1817" FROM RECORD LAND PARTITION PLAT NO. 2004-008
- FOUND 5/8" IRON PIN WITH NO CAP FROM RECORD LAND PARTITION PLAT NO. 2004-008
- FOUND 5/8" IRON PIN WITH ATTACHED YELLOW PLASTIC CAP MARKED "HANLEY ENGR PLS 1206" FROM RECORD PLAT OF HIGHLAND CREST SUBDIVISION
- FOUND 5/8" IRON PIN WITH NO CAP FROM RECORD PLAT OF HIGHLAND CREST SUBDIVISION
- SET 5/8"x30" IRON PIN WITH ATTACHED YELLOW PLASTIC CAP MARKED "BENCHMARK SURVEYING"
- () RECORD BEARING AND DISTANCE
- [] RECORD BEARING AND DISTANCE FROM THE PLAT OF HIGHLAND CREST SUBDIVISION
- [1] RECORD BEARING AND DISTANCE FROM LAND PARTITION PLAT NO. 1993-010
- [2] RECORD BEARING AND DISTANCE FROM LAND PARTITION PLAT NO. 2004-008
- x-x FENCE LINE
- ▨ PORTION OF ACCESS EASEMENT FROM LP P2004-008 EXTINGUISHED BY THIS REPLAT

NOTES:

1. THE MEASURED CENTERLINE DATA FOR THE ACCESS EASEMENT SHOWN HEREON MATCHES THE RECORD FROM PARTITION PLAT P2004-008

REGISTERED PROFESSIONAL LAND SURVEYOR

Jason L. Hatfield
OREGON
 NOVEMBER 30, 2007
JASON L. HATFIELD
 #69454
 EXPIRES: 6/30/2011



BENCHMARK LAND SURVEYING
 217 N. CANYON BLVD. JOHN DAY, OREGON
 2101 MAIN STREET, STE 223 BAKER CITY, OREGON
 541-575-1251 ~ 800-699-0516

BEING A REPLAT OF PARCELS 1 AND 2 OF LAND PARTITION PLAT NO. P2004-008 AND ADJUSTED PARCEL 1 OF LAND PARTITION PLAT NO. P1993-010 SITUATED IN THE SW1/4NW1/4 SECTION 20, T.9S., R.40E., W.M., CITY OF BAKER CITY, BAKER COUNTY, OREGON

SURVEYED FOR	KENT NELSON AND TOM ELLIS	
SURVEYED BY	JLH & MCS	1/13/2010
Scale: 1"=40'	Drawn by: JLH	SHEET 1 OF 2