

# LAND PARTITION PLAT NO. 2009-003

A PARTITION OF TRACT 5 OF BAKER INDUSTRY AND RESOURCES CORPORATION SUBDIVISION  
SITUATED IN THE SE1/4SE1/4 SECTION 20, T.9S., R.40E., W.M.;  
CITY OF BAKER CITY, BAKER COUNTY, OREGON  
SURVEY COMPLETED JANUARY 16, 2009

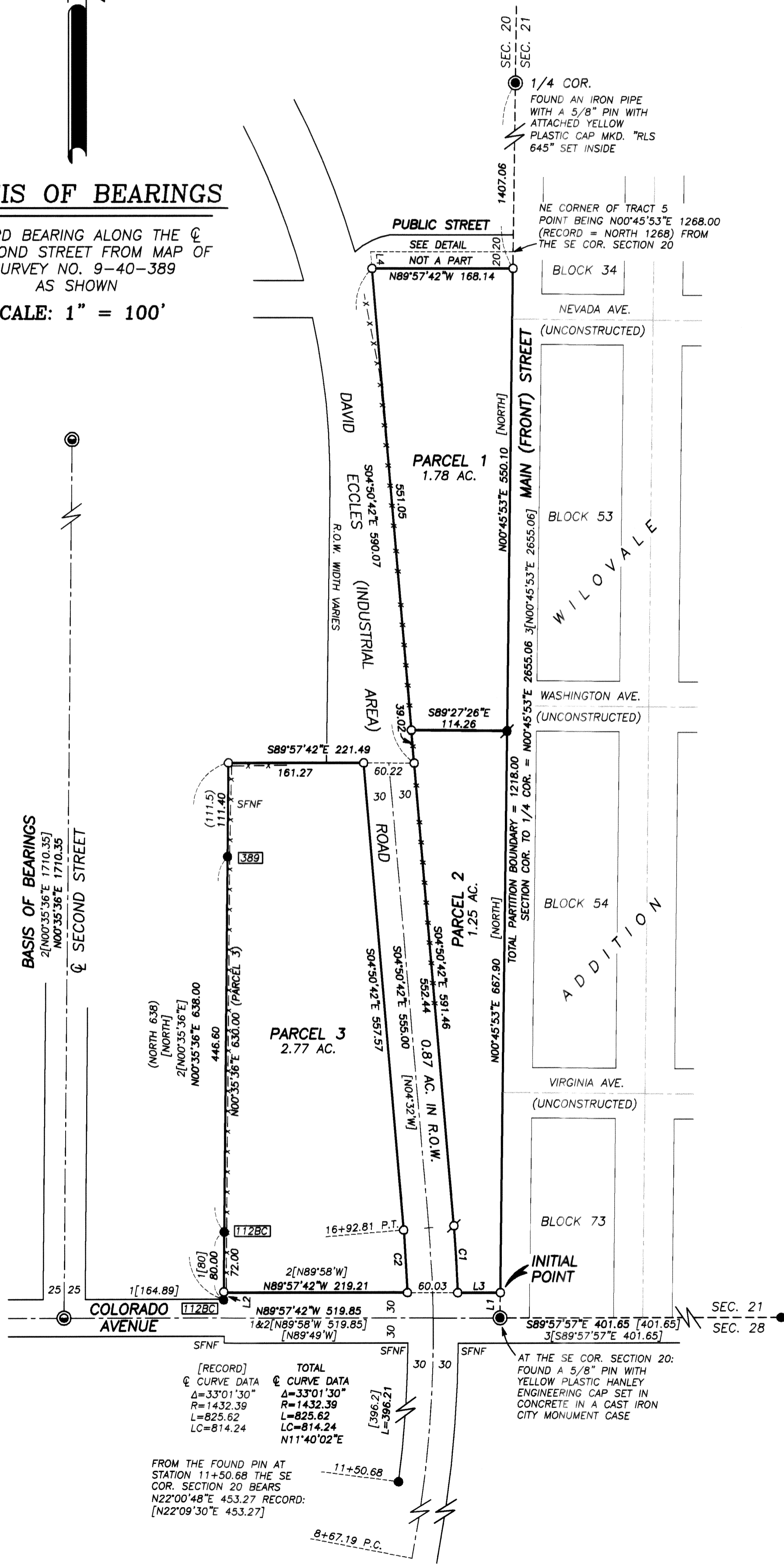
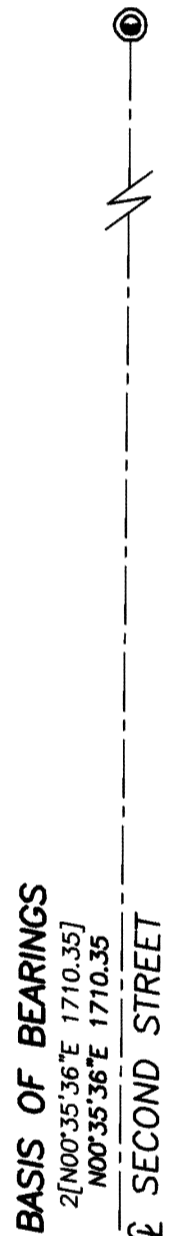
B09 06 0187



## BASIS OF BEARINGS

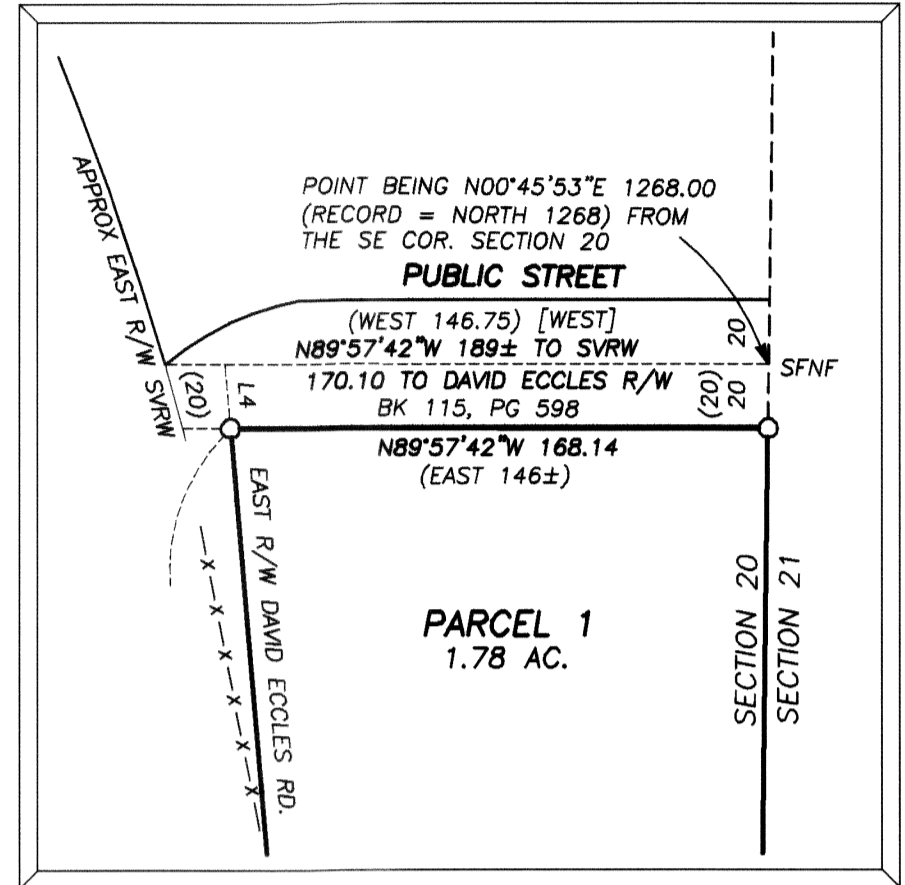
RECORD BEARING ALONG THE  $\odot$  OF SECOND STREET FROM MAP OF SURVEY NO. 9-40-389 AS SHOWN

SCALE: 1" = 100'



## DETAIL

SCALE: 1"=60'



## LEGEND

- $\odot$  FOUND SECTION CORNER OR 1/4 CORNER MONUMENT AS NOTED
- $\odot$  FOUND A 1/2" PIN BELOW GROUND IN A CAST IRON CITY MONUMENT CASE
- $\bullet$  FOUND 5/8" IRON PIN WITH ATTACHED YELLOW PLASTIC CAP MARKED "HANLEY ENGR. PLS 1206" FROM BAKER INDUSTRY & RESOURCES CORPORATION SUBDIVISION PLAT UNLESS OTHERWISE SHOWN
- $\bullet$  FOUND 5/8" IRON PIN WITH ATTACHED YELLOW PLASTIC CAP MARKED BGB SURVEY MARKER FROM RECORD SURVEY NO. 9-40-661
- $\odot$  SET 1/4" X 1/2" MAG NAIL IN CONCRETE SLAB
- $\circ$  SET 5/8" X 30" IRON PIN WITH ATTACHED YELLOW PLASTIC CAP MARKED BGB SURVEY MARKER
- ( ) DEED RECORD BEARING AND DISTANCE
- [ ] RECORD BEARING AND DISTANCE FROM PLAT OF BAKER INDUSTRY AND RESOURCES CORPORATION SUBDIVISION-PHASE 1 AND 3
- 1[ ] RECORD DISTANCE FROM SURVEY NO. 9-40-112BC
- 2[ ] RECORD BEARING AND DISTANCE FROM SURVEY NO. 9-40-389
- 3[ ] RECORD BEARING AND DISTANCE FROM SURVEY NO. 9-40-661
- $\square$  FOUND MONUMENT FROM RECORDED SURVEY NO. 9-40-
- X-X CHAIN-LINK FENCE
- SFNF MONUMENT SEARCHED FOR, NOT FOUND
- SVRW SUMPTER VALLEY RAILWAY COMPANY

B09 06 0188

## LINE TABLE

LINE	BEARING	DIST.
L1	$N00'45'53"E$	30.00
L2	$N00'35'36"E$	8.00
L3	$S89'57'42"E$	50.81
L4	$S04'50'42"E$	20.07

## CURVE TABLE

CURVE	RADIUS	DELTA	LENGTH	LONG CHORD BEARING-DIST.
C1	1462.39	$3'07'18"$	79.68	$S03'17'03"E \ 79.67$
C2	1402.39	$3'02'46"$	74.56	$S03'19'19"E \ 74.55$

REGISTERED PROFESSIONAL LAND SURVEYOR

*Jason L. Hatfield*  
**OREGON**  
 NOVEMBER 30, 2007  
**JASON L. HATFIELD**  
 #69454  
 EXPIRES: 6/30/2009

B09 06 0189