

LAND PARTITION PLAT NO. 2009-003

A PARTITION OF TRACT 5 OF BAKER INDUSTRY AND RESOURCES CORPORATION SUBDIVISION
SITUATED IN THE SE1/4SE1/4 SECTION 20, T.9S., R.40E., W.M.;
CITY OF BAKER CITY, BAKER COUNTY, OREGON
SURVEY COMPLETED JANUARY 16, 2009

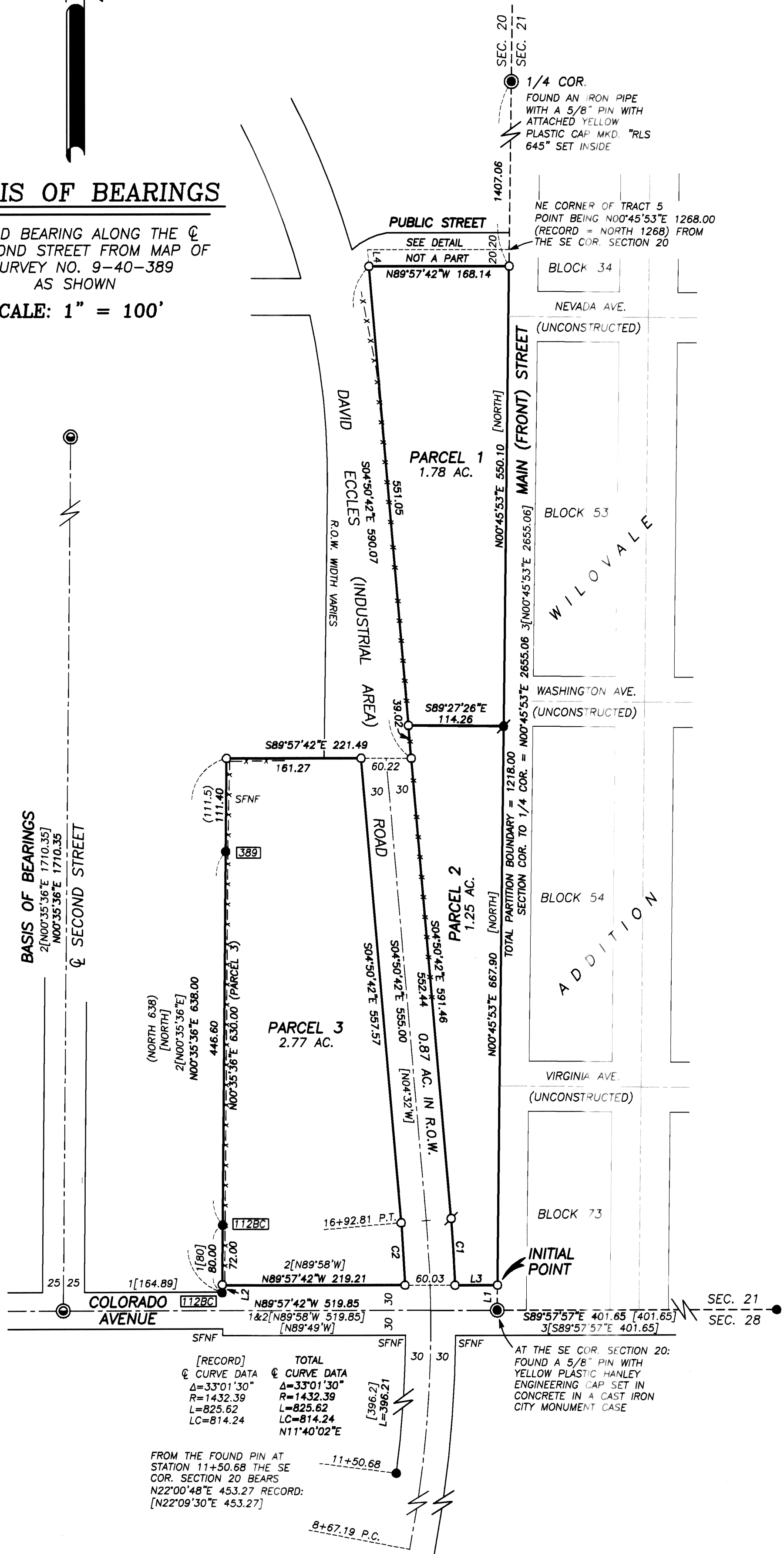
B09 06 0187



BASIS OF BEARINGS

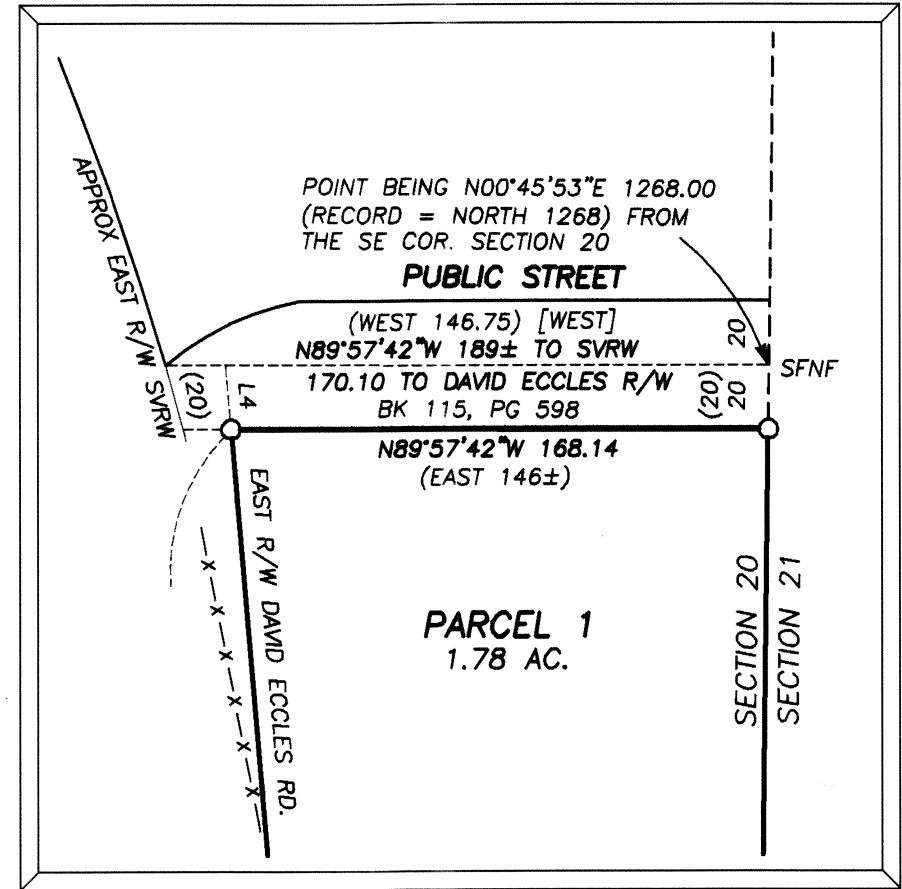
RECORD BEARING ALONG THE ϕ OF SECOND STREET FROM MAP OF SURVEY NO. 9-40-389 AS SHOWN

SCALE: 1" = 100'



DETAIL

SCALE: 1"=60'



LEGEND

- FOUND SECTION CORNER OR 1/4 CORNER MONUMENT AS NOTED
- ⊙ FOUND A 1/2" PIN BELOW GROUND IN A CAST IRON CITY MONUMENT CASE
- FOUND 5/8" IRON PIN WITH ATTACHED YELLOW PLASTIC CAP MARKED 'HANLEY ENGR. PLS 1206" FROM BAKER INDUSTRY & RESOURCES CORPORATION SUBDIVISION PLAT UNLESS OTHERWISE SHOWN
- FOUND 5/8" IRON PIN WITH ATTACHED YELLOW PLASTIC CAP MARKED BGB SURVEY MARKER FROM RECORD SURVEY NO. 9-40-661
- ⊕ SET 1/4" X 1 1/2" MAG NAIL IN CONCRETE SLAB
- SET 5/8"x30" IRON PIN WITH ATTACHED YELLOW PLASTIC CAP MARKED BGB SURVEY MARKER
- () DEED RECORD BEARING AND DISTANCE
- [] RECORD BEARING AND DISTANCE FROM PLAT OF BAKER INDUSTRY AND RESOURCES CORPORATION SUBDIVISION-PHASE 1 AND 3
- 1[] RECORD DISTANCE FROM SURVEY NO. 9-40-112BC
- 2[] RECORD BEARING AND DISTANCE FROM SURVEY NO. 9-40-389
- 3[] RECORD BEARING AND DISTANCE FROM SURVEY NO. 9-40-661
- FOUND MONUMENT FROM RECORDED SURVEY NO. 9-40-□
- X-X CHAIN-LINK FENCE
- SFNF MONUMENT SEARCHED FOR, NOT FOUND
- SVRW SUMPTER VALLEY RAILWAY COMPANY

B09 06 0188

LINE TABLE

LINE	BEARING	DIST.
L1	N00°45'53"E	30.00
L2	N00°35'36"E	8.00
L3	S89°57'42"E	50.81
L4	S04°50'42"E	20.07

CURVE TABLE

CURVE	RADIUS	DELTA	LENGTH	LONG CHORD BEARING-DIST.
C1	1462.39	3°07'18"	79.68	S03°17'03"E 79.67
C2	1402.39	3°02'46"	74.56	S03°19'19"E 74.55

REGISTERED PROFESSIONAL LAND SURVEYOR

Jason L Hatfield
OREGON
NOVEMBER 30, 2007
JASON L. HATFIELD
#69454

EXPIRES: 6/30/2009

B09 06 0189