

B09 05 0126

**PARTITION PLAT No. P2009-002**  
 A Partition of Parcel 2 of Partition No. 2006-007 in the  
 NW1/4NW1/4 of Section 8, T9S, R40E, WM  
 Baker County, Oregon

DECLARATION  
 I Candace Camell, do hereby declare that I have caused this partition to be prepared in accordance with Oregon Revised Statutes Chapter 92 and hereby vac Parcel 2 of Baker County Partition No. 2006-007.

*Candace J. Camell*

STATE OF OREGON }  
 COUNTY OF BAKER } ss

Signed and sworn to before me on February 2, 2009 by Candace Camell

*Melanie Jeanne Ewing*  
 My Commission Expires 12/31/12



**APPROVALS**

I have reviewed this plat and find it complies with ORS Chapter 92 and ORS 209.250

*Th. J. Hubley*  
 Baker County Surveyor  
 Date 1-29-2009

I have reviewed this partition and find it complies with the regulations of Baker County, Oregon.

*Holly K. Clark*  
 Baker County Planning Director  
 Date 2/18/09

All ad valorem taxes and other special assessments due pursuant to law have been assessed and collected.

*Alicia VanLingen*  
 Baker County Treasurer  
 Date 2/12/09

STATE OF OREGON }  
 COUNTY OF BAKER } ss

I do hereby certify that the attached partition was received for recording on the 2 day of February, 2009,

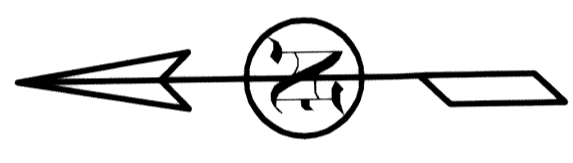
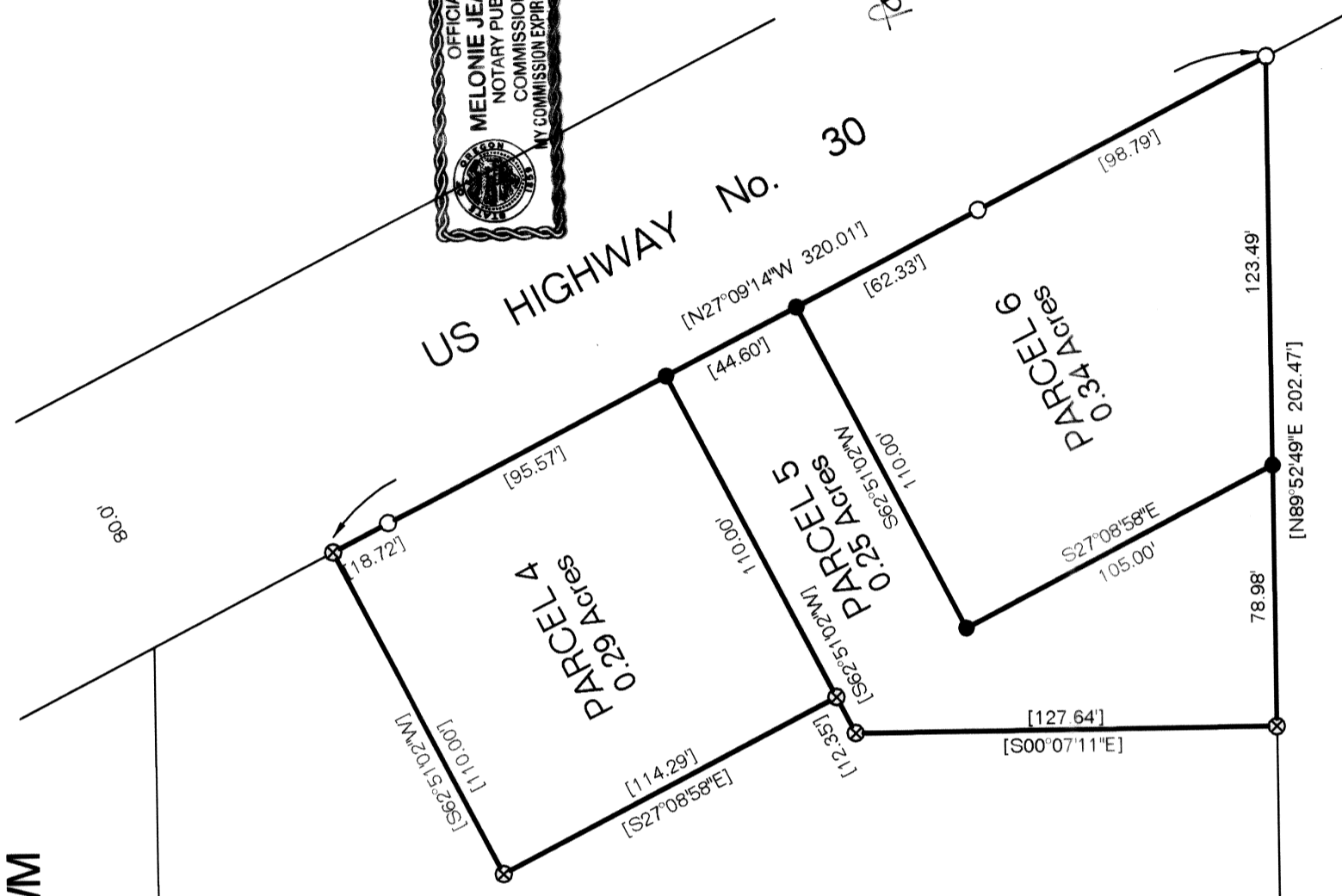
at 1:35 o'clock P M as Partition No. 2009-002.

*Demara J. Green Co. Clark*  
 Baker County Clerk

*Karen Phillips*  
 Deputy

**LEGEND**

- Found No. 5 Rebar with Yellow Plastic Caps marked Hanley Engr. PLS 1206
  - ⊗ Found No. 5 Rebar with Yellow Plastic Caps marked PLS 699
  - Set 30" long No. 5 Rebar with Yellow Plastic Caps marked PLS 699
- Record and accepted Bearings & Distances from Partition No. 2006-007 [.....]



**NARRATIVE**

The purpose of this survey was to correct Partition No. 2006-007 in the NW1/4NW1/4 of Section 8, T9S, R40E, WM, Baker County, Oregon. Parcels 1 and 3 of said Partition No. 2006-007 were originally one parcel and were divided as shown on that partition plat. Parcel No. 2 was originally shown as three discrete parcels and it is the intent to restore the discrete parcels that were eliminated on Partition No. 2006-007.

**CERTIFICATION**

I, Leland Lee Myers, a Professional Land Surveyor registered in the State of Oregon, 587 E Auburn Street, PO Box 99, Sumpter, Oregon 97877, completed this survey on January 25, 2009, by setting the monuments and do hereby certify that the information shown on this map is correct to the best of my knowledge. The tract of land in the NW1/4NW1/4 of Section 8, T9S, R40E, WM, Baker County, Oregon, being partitioned is Parcel 2 of Partition No. 2006-007, a tract containing 0.88 acres of land.

REGISTERED  
 PROFESSIONAL  
 LAND SURVEYOR

*Leland Lee Myers*  
 OREGON  
 JULY 9, 1965  
 LELAND LEE MYERS  
 699  
 Renewal Date 1/1/11

FILED  
 BAKER COUNTY SURVEYOR  
 SURVEY No. \_\_\_\_\_

B09 05 0124

ROAD CHICO