

PARTITION PLAT NO. P2009-001

A PARTITION OF PARCEL 1 OF PARTITION PLAT NO. 2007-018, BAKER COUNTY, OREGON. LOCATED IN THE NORTHEAST 1/4 OF SECTION 9, TOWNSHIP 9 SOUTH, RANGE 40 EAST, WILLAMETTE MERIDIAN.

SURVEY FOR

SURVEY BY

ERNEST E. SMITH
42423 N. CEDAR ROAD
BAKER CITY, OR 97814
(541) 523-2675

SURVEYED THROUGH DECEMBER 08, 2008

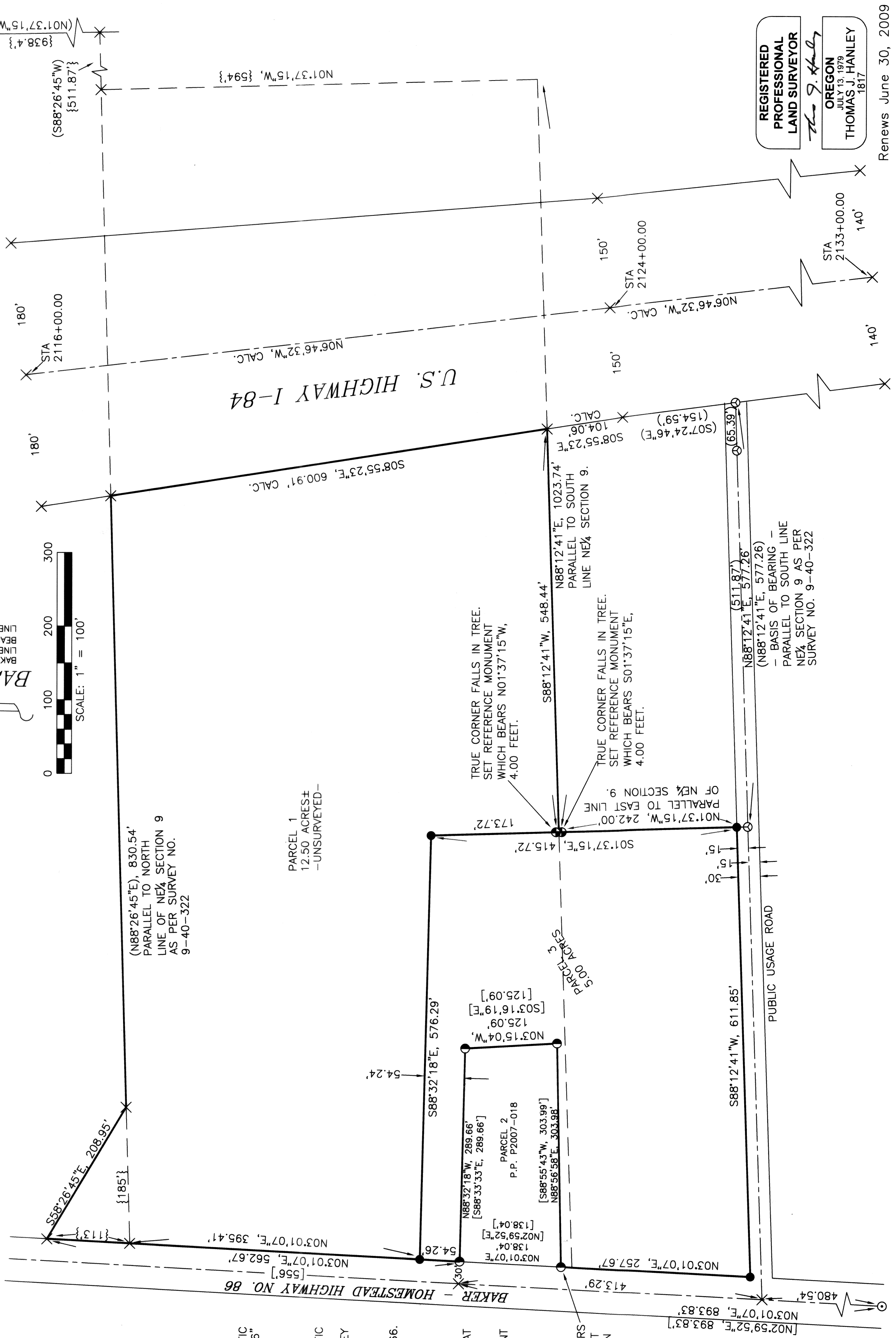
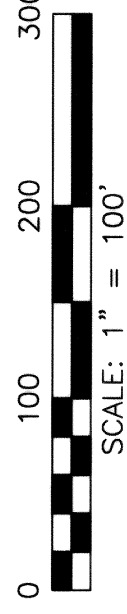
HANLEY ENGINEERING, INC.
THOMAS J. HANLEY, PLS 1817
P.O. BOX 701
BAKER CITY, OR 97814-0701
(541) 523-3803

LEGEND

- SET 5/8" X 30" REBAR WITH YELLOW PLASTIC CAP MARKED "HANLEY ENGR. PLS 1817".
- SET 5/8" X 30" REBAR WITH ORANGE PLASTIC CAP MARKED "REFERENCE MONUMENT" AS NOTED.
- FOUND 5/8" REBAR, NO CAP AS PER SURVEY NO. 9-40-641MP BY LELAND MYERS, FILED OCTOBER 17, 2007.
- FOUND 5/8" REBAR WITH YELLOW PLASTIC CAP MARKED "HANLEY ENGR PLS 1206" AS PER SURVEY NO. 9-40-322 BY JAMES D. HANLEY, FILED AUGUST 29, 1990.
- FOUND 5/8" REBAR WITH YELLOW PLASTIC CAP MARKED "PLS 699" AS PER PARTITION PLAT NO. 2007-018, SURVEY NO. 9-40-641MP BY LELAND MYERS, FILED OCTOBER 17, 2007.
- { } RECORD AS PER DEED NO. 74-15-066.
- () RECORD AS PER SURVEY NO. 9-40-322.
- [] RECORD AS PER SURVEY NO. 9-40-641MP, SAME AS PARTITION PLAT NO. 2007-018.
- × CALCULATED POSITION - NO MONUMENT SET.

BASIS OF BEARING

BAKER COUNTY SURVEY NO. 9-40-322. LINE OF MONUMENTS IN PUBLIC ROAD BEARS N88°12'41"E, PARALLEL TO SOUTH LINE OF THE NE¼ OF SECTION 9.



REGISTERED PROFESSIONAL LAND SURVEYOR

THOMAS J. HANLEY
JUL 13, 1978
1817

Renews June 30, 2009