

# PARTITION PLAT NO. P2009-001

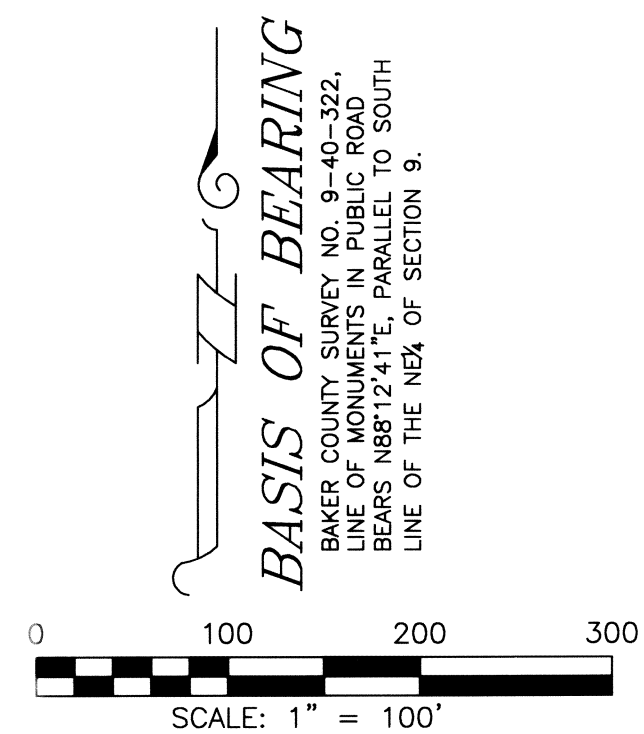
A PARTITION OF PARCEL 1 OF PARTITION PLAT NO. 2007-018, BAKER COUNTY, OREGON. LOCATED IN THE NORTHEAST 1/4 OF SECTION 9, TOWNSHIP 9 SOUTH, RANGE 40 EAST, WILLAMETTE MERIDIAN.

## SURVEY FOR SURVEY BY

ERNEST E. SMITH  
42423 N. CEDAR ROAD  
BAKER CITY, OR 97814  
(541) 523-2675

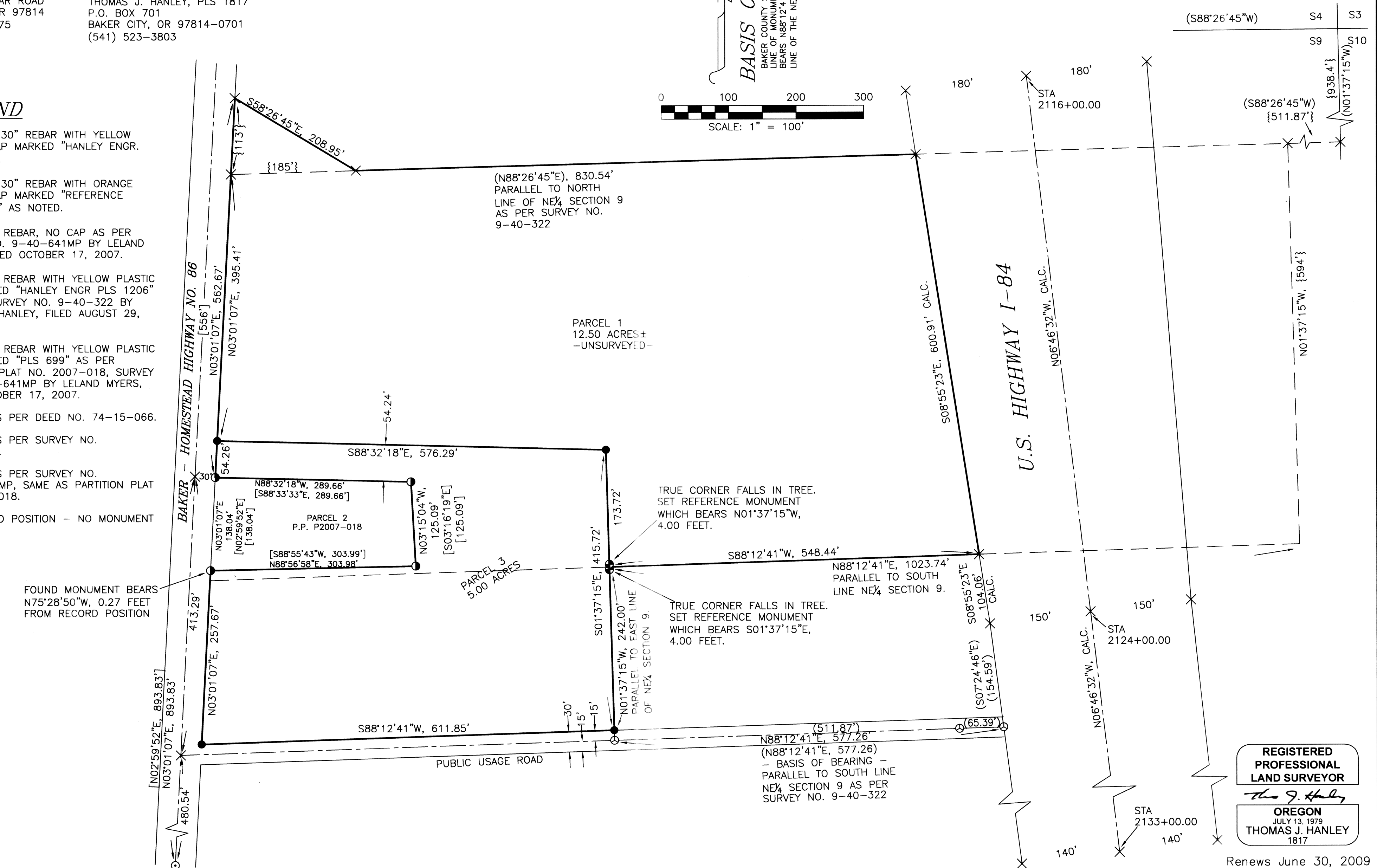
HANLEY ENGINEERING, INC.  
THOMAS J. HANLEY, PLS 1817  
P.O. BOX 701  
BAKER CITY, OR 97814-0701  
(541) 523-3803

SURVEYED THROUGH DECEMBER 08, 2008



### LEGEND

- SET 5/8" X 30" REBAR WITH YELLOW PLASTIC CAP MARKED "HANLEY ENGR. PLS 1817".
- SET 5/8" X 30" REBAR WITH ORANGE PLASTIC CAP MARKED "REFERENCE MONUMENT" AS NOTED.
- FOUND 5/8" REBAR, NO CAP AS PER SURVEY NO. 9-40-641MP BY LELAND MYERS, FILED OCTOBER 17, 2007.
- ⊕ FOUND 5/8" REBAR WITH YELLOW PLASTIC CAP MARKED "HANLEY ENGR PLS 1206" AS PER SURVEY NO. 9-40-322 BY JAMES D. HANLEY, FILED AUGUST 29, 1990.
- FOUND 5/8" REBAR WITH YELLOW PLASTIC CAP MARKED "PLS 699" AS PER PARTITION PLAT NO. 2007-018, SURVEY NO. 9-40-641MP BY LELAND MYERS, FILED OCTOBER 17, 2007.
- { } RECORD AS PER DEED NO. 74-15-066.
- ( ) RECORD AS PER SURVEY NO. 9-40-322.
- [ ] RECORD AS PER SURVEY NO. 9-40-641MP, SAME AS PARTITION PLAT NO 2007-018.
- × CALCULATED POSITION - NO MONUMENT SET.



REGISTERED PROFESSIONAL LAND SURVEYOR  
*Thomas J. Hanley*  
OREGON  
JULY 13, 1979  
THOMAS J. HANLEY  
1817

Renews June 30, 2009