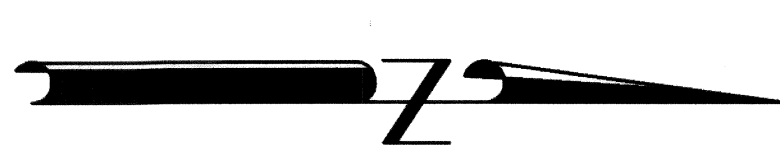
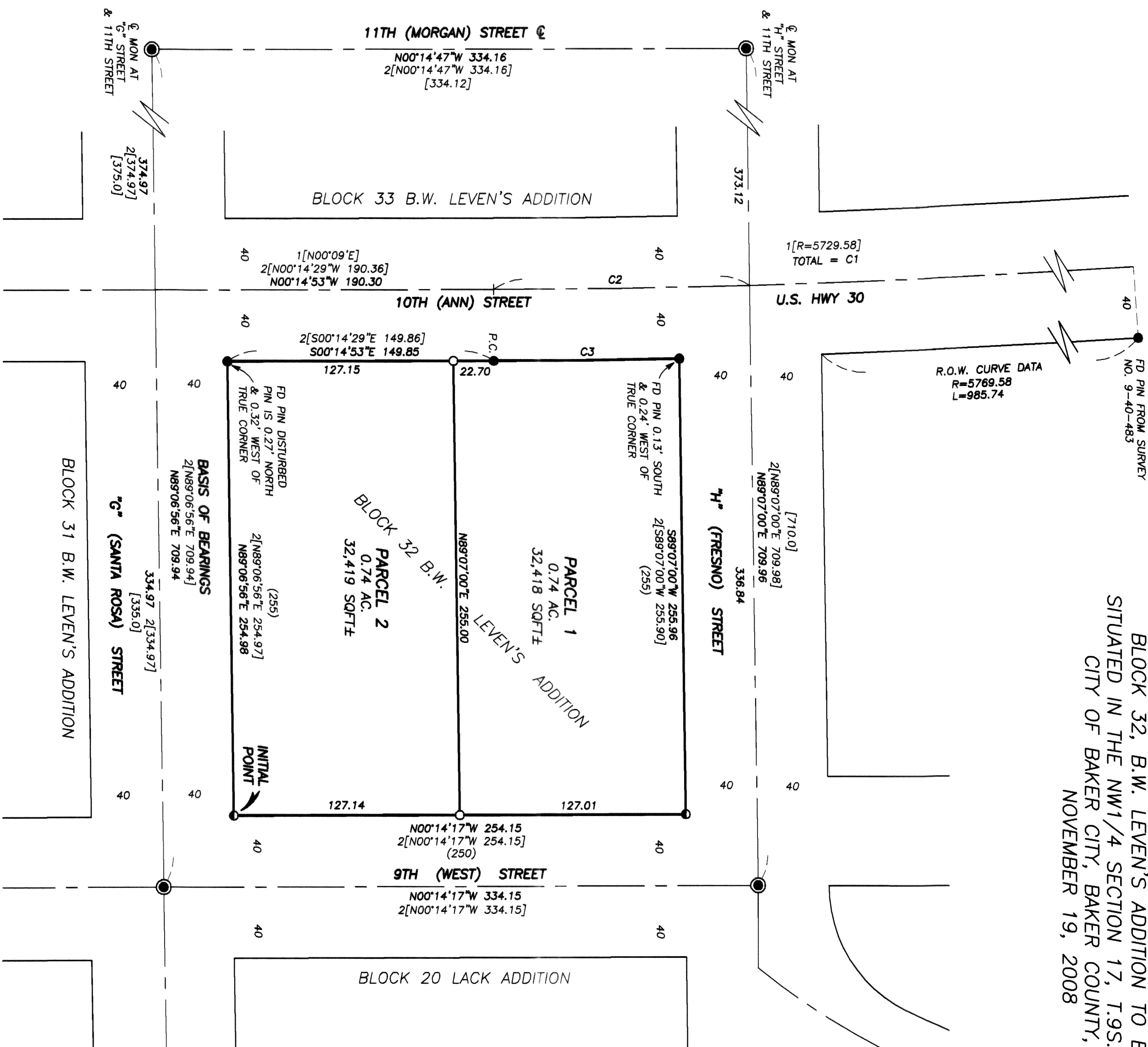


LAND PARTITION PLAT NO. 2008-034

BLOCK 32, B.W. LEVEN'S ADDITION TO BAKER CITY,
SITUATED IN THE NW1/4 SECTION 17, T.9S., R.40E., W.M.,
CITY OF BAKER CITY, BAKER COUNTY, OREGON
NOVEMBER 19, 2008



BASIS OF BEARINGS

RECORD MAP OF SURVEY NO. 9-40-433
AS SHOWN
SCALE: 1" = 50'

LEGEND

- FOUND 5/8" IRON PIN - NO CAP FROM RECORD SURVEY NO. 9-40-433
- FOUND 5/8" IRON PIN WITH ATTACHED YELLOW PLASTIC CAP MARKED "HANLEY ENGR. PLS 1206" FROM RECORD SURVEY NO. 9-40-433 UNLESS OTHERWISE NOTED.
- FOUND CENTERLINE MONUMENT IN AN 8" CAST IRON BAKER CITY MONUMENT CASE, SHOWN ON BAKER CITY SURVEY NO. AD-19-19
- SET 5/8"x30" IRON PIN WITH ATTACHED YELLOW PLASTIC CAP MARKED B08 SURVEY MARKER
- () RECORD DISTANCE FROM PLAT OF B.W. LEVEN'S ADDITION TO BAKER CITY
- [] RECORD BEARING AND DISTANCE FROM BAKER CITY SURVEY NO. AD-19-19
- [] RECORD BEARING AND DISTANCE FROM O.S.H.D. DRAWING NO. 48-7-3
- 2[] RECORD BEARING AND DISTANCE FROM SURVEY NO. 9-40-433

CURVE TABLE

CURVE	RADIUS	DELTA	LENGTH	LONG CHORD BEARING-DIST.
C1	5729.58	11°37'10"	1161.94	N06°03'27"W 1159.95
C2	5729.58	1°26'19"	143.87	N00°58'02"W 143.86
C3	5769.58	1°02'09"	104.31	S00°45'57"E 104.30

REGISTERED
PROFESSIONAL
LAND SURVEYOR

Jason L. Hatfield
OREGON
NO. 1207
JASON L. HATFIELD
#89454
EXPIRES: 6/30/2009