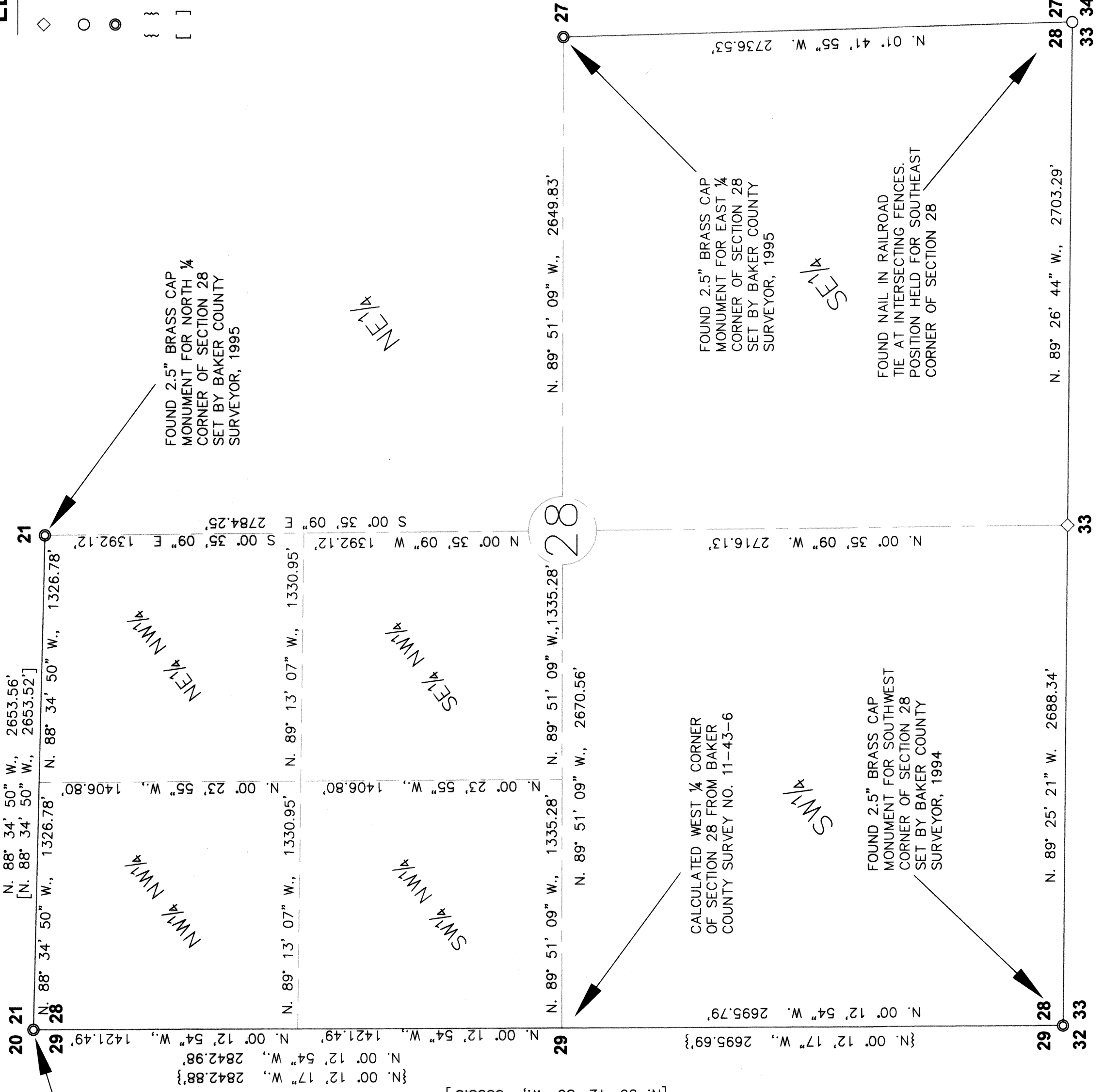


# SECTION 28, T. 11 S., R 43 E., W.M.

# PARTITION PLAT NO. P2007-<sup>K.V.</sup>~~019~~ 020

### LEGEND

- $\diamond$  Set 12" bridge spike at intersection of existing East-West fence and old fence remnants to the North
- $\circ$  Found, monument as noted.
- $\bullet$  Found, brass cap monument as noted.
- { } Record Data Per Ba. Co. Surv. No. 11-43-6.
- [ ] Record Data Per Ba. Co. Surv. No. 11-43-7.



BAKER COUNTY SURVEY NO. 11-43-7, NORTH LINE OF THE NORTHWEST 1/4 OF SECTION 28 BEARS S. 88° 34' 50" E.

**BASIS OF BEARING**



1" = 500'

REGISTERED PROFESSIONAL LAND SURVEYOR

OREGON JULY 13, 1979  
**THOMAS J. HANLEY**  
1817

Renews June 30, 2009

**HANLEY ENGINEERING, INC.**  
2043 MAIN STREET  
BAKER CITY, OREGON 97814  
(541) 523-3803

### REFERENCES

Baker County Survey No. 11-43-6  
Baker County Survey No. 11-43-7