

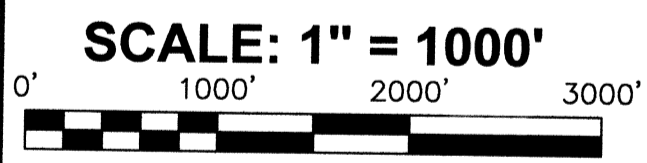
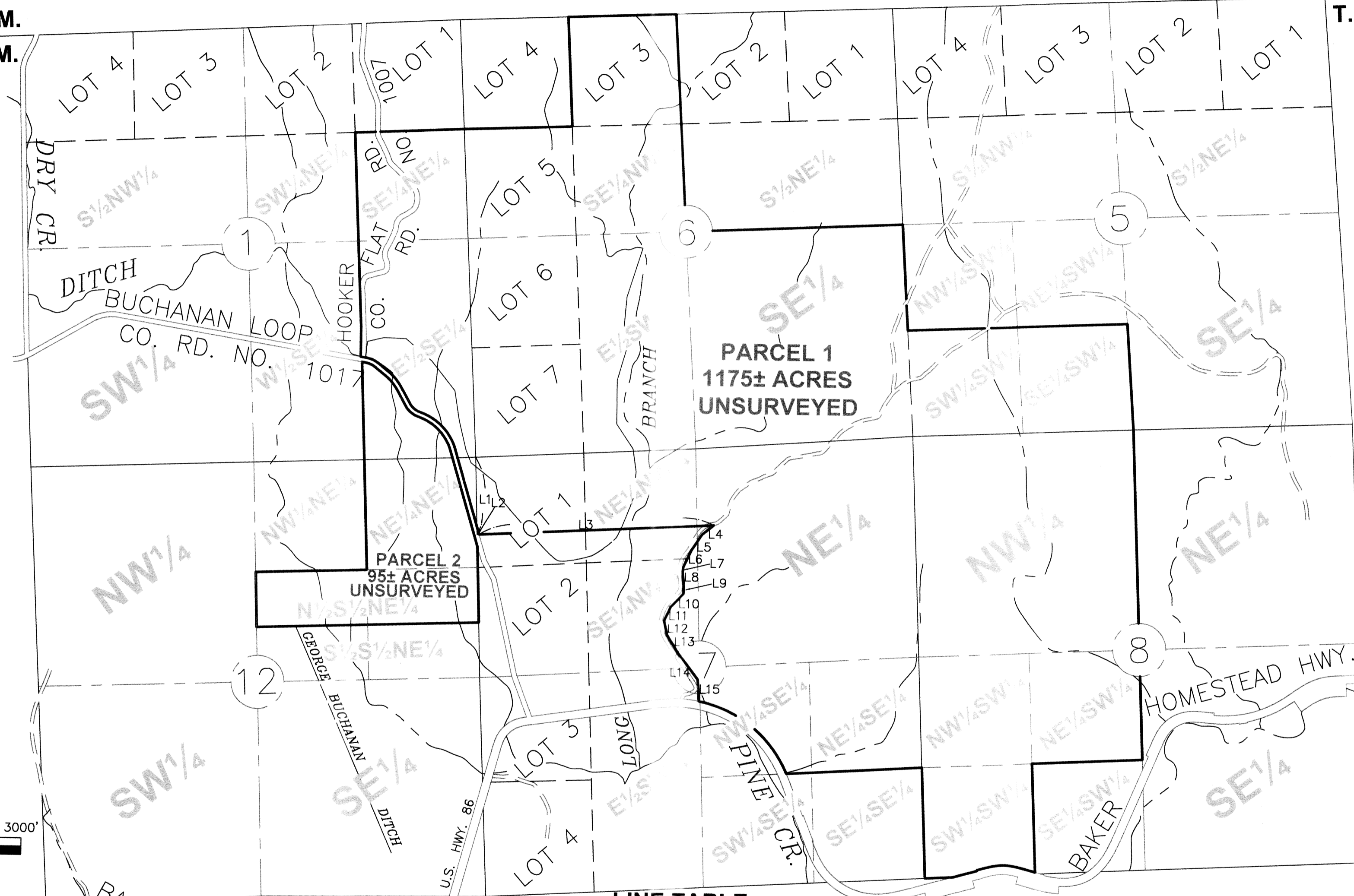
# PARTITION PLAT NO. P2007-009

T. 7 S., R. 46 E., W.M.

T. 8 S., R. 46 E., W.M.

T. 7 S., R. 47 E., W.M.

T. 8 S., R. 47 E., W.M.



**LINE TABLE**

LINE	BEARING	DISTANCE
L1	S. 0°01'39"E.	923.07'
L2	N. 89°15'49"E.	31.00'
L3	N. 89°15'49"E.	2835.90'
L4	S. 53°38'01"W.	179.61'
L5	S. 35°30'09"W.	234.49'
L6	S. 27°09'18"W.	221.96'
L7	S. 08°33'59"W.	59.15'
L8	S. 03°49'38"E.	161.04'
L9	S. 03°54'33"W.	100.93'
L10	S. 45°19'06"W.	224.87'
L11	S. 26°42'39"W.	182.14'
L12	S. 10°07'00"E.	171.93'
L13	S. 29°43'53"E.	249.75'
L14	S. 35°07'20"E.	408.50'
L15	S. 1°10'35"E.	260.76'

T. 8 S., R. 46 E., W.M.  
T. 8 S., R. 47 E., W.M.

**HANLEY ENGINEERING, INC.**  
 P.O. BOX 701, 2043 MAIN STREET, BAKER CITY, OREGON 97814 (541) 523-3803

REGISTERED  
 PROFESSIONAL  
 LAND SURVEYOR

OREGON  
 JULY 13, 1979  
 THOMAS J. HANLEY  
 1817

Renews June 30, 2009