

PARTITION PLAT NO. P2006-023

WEST 1/4 CORNER, SECTION 33
 FOUND 1 1/2" I.D. PIPE PER
 BA. CO. SUR. NO. 7-39-30.

FOUND 5/8" REBAR SET
 BY BA. CO. SUR. NO. 7-39-31.

BASIS OF BEARING
 (S. 89° 58' 12" E., 1330.10')

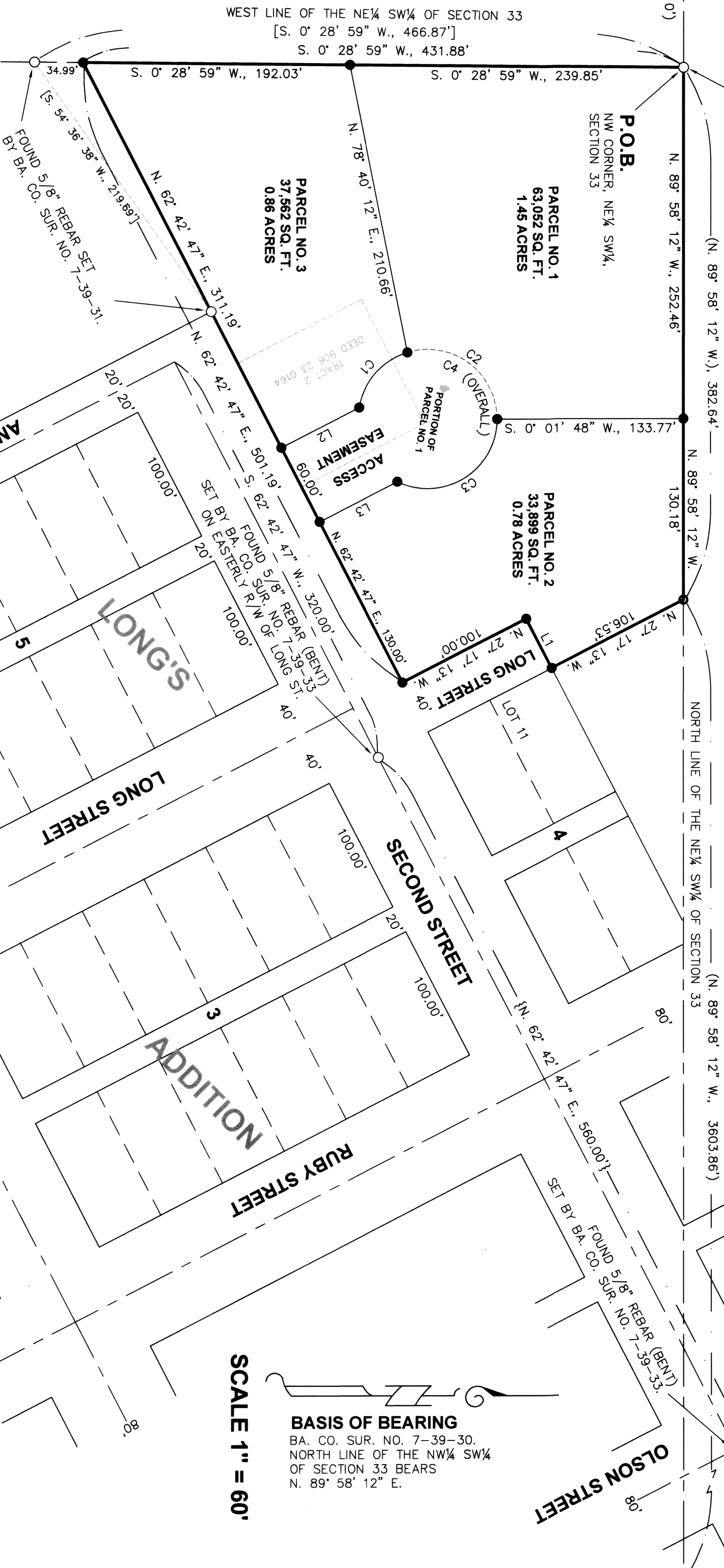
P.O.B.
 NW CORNER, NE 1/4 SW 1/4,
 SECTION 33

PARCEL NO. 1
 63,062 SQ. FT.
 1.45 ACRES

PARCEL NO. 2
 33,899 SQ. FT.
 0.78 ACRES

PARCEL NO. 3
 37,562 SQ. FT.
 0.86 ACRES

WEST LINE OF THE NE 1/4 SW 1/4 OF SECTION 33
 [S. 0° 28' 59" W., 466.87']
 S. 0° 28' 59" W., 431.88'



SCALE 1" = 60'

BASIS OF BEARING
 BA. CO. SUR. NO. 7-39-30.
 NORTH LINE OF THE NW 1/4 SW 1/4
 OF SECTION 33 BEARS
 N. 89° 58' 12" E.

LEGEND

- Set 5/8" x 30" rebar with plastic cap marked "HANLEY ENGR. PLS 1817".
- Found monument as noted.
- () Record Data Per Ba. Co. Sur. No. 7-39-30.
- [] Record Data Per Ba. Co. Sur. No. 7-39-31.
- { } Record Data Per Ba. Co. Sur. No. 7-39-33.

CURVE TABLE

CURVE	RADIUS	DELTA ANGLE	ARC LENGTH	CHORD BEARING	CHORD LENGTH
C1	50.00'	63° 29' 56"	55.41'	N. 48° 40' 04" W.	52.62'
C2	50.00'	106° 56' 54"	93.33'	N. 36° 33' 21" E.	80.36'
C3	50.00'	115° 48' 47"	101.07'	S. 32° 03' 48" E.	84.72'
C4	50.00'	286° 15' 37"	249.81'	N. 62° 42' 47" E.	60.00'

LINE TABLE

LINE	BEARING	DISTANCE
L1	N. 62° 42' 47" E.	40.00'
L2	N. 27° 17' 13" W.	63.00'
L3	S. 27° 17' 13" E.	63.00'

HANLEY ENGINEERING, INC.
 P.O. BOX 701, 2043 MAIN STREET, BAKER
 CITY, OREGON 97814 (541) 523-3803

REGISTERED PROFESSIONAL LAND SURVEYOR
 THOMAS J. HANLEY
 JULY 13, 1979
 1817