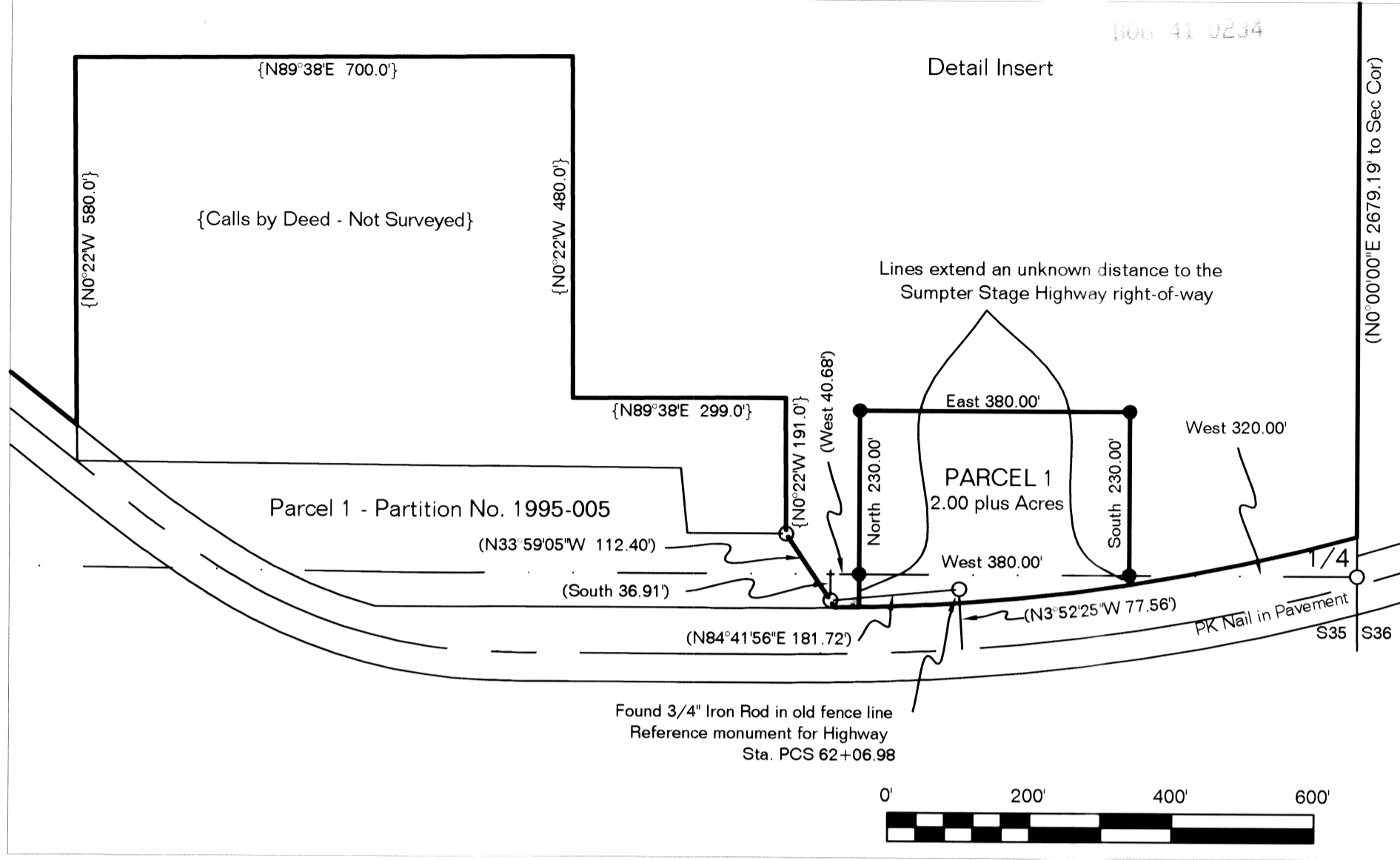


- DANIEL BEST & Co. MINERAL SURVEY No. 35
Section 23
- (1) E1/2NW1/4SW1/4NE1/4
 - (2) W1/2NE1/4SW1/4NE1/4
 - (3) SE1/4SW1/4NE1/4
 - (4) NW1/4NE1/4SE1/4
 - (5) E1/2SW1/4NE1/4SE1/4
 - (6) W1/2SE1/4NE1/4SE1/4
 - (7) E1/2NE1/4SE1/4SE1/4
- Section 24
- (8) W1/2NW1/4SW1/4SW1/4
 - (9) N1/2S1/2SW1/4SW1/4
 - (10) N1/2S1/2SE1/4SW1/4



PARTITION PLAT No. P2006-022
In Sections 14, 22, 23, 24, 25, 26 & 35, T10S, R39E, WM
Baker County, Oregon

LEGEND

- GLO Calls in Italics - Bearings Cardinal if not shown 660'
- Survey No. 10-39-9 Calls in Brackets [.....]
- Survey No. 10-39-157 Calls in Parentheses (.....)
- Deed Calls {.....}
- Set 30" long No. 5 Rebar with Yellow Plastic Cap marked PLS 699
- Found No. 5 Rebars with Plastic Caps marked LS #2431 unless otherwise noted



BASIS FOR BEARINGS
Baker County Survey No. 9-40-157



REGISTERED PROFESSIONAL LAND SURVEYOR
Leland Lee Myers
OREGON
JULY 9, 1965
LELAND LEE MYERS
699
Renewal Date 1/1/07

FILED _____
BAKER COUNTY SURVEYOR
SURVEY No. _____