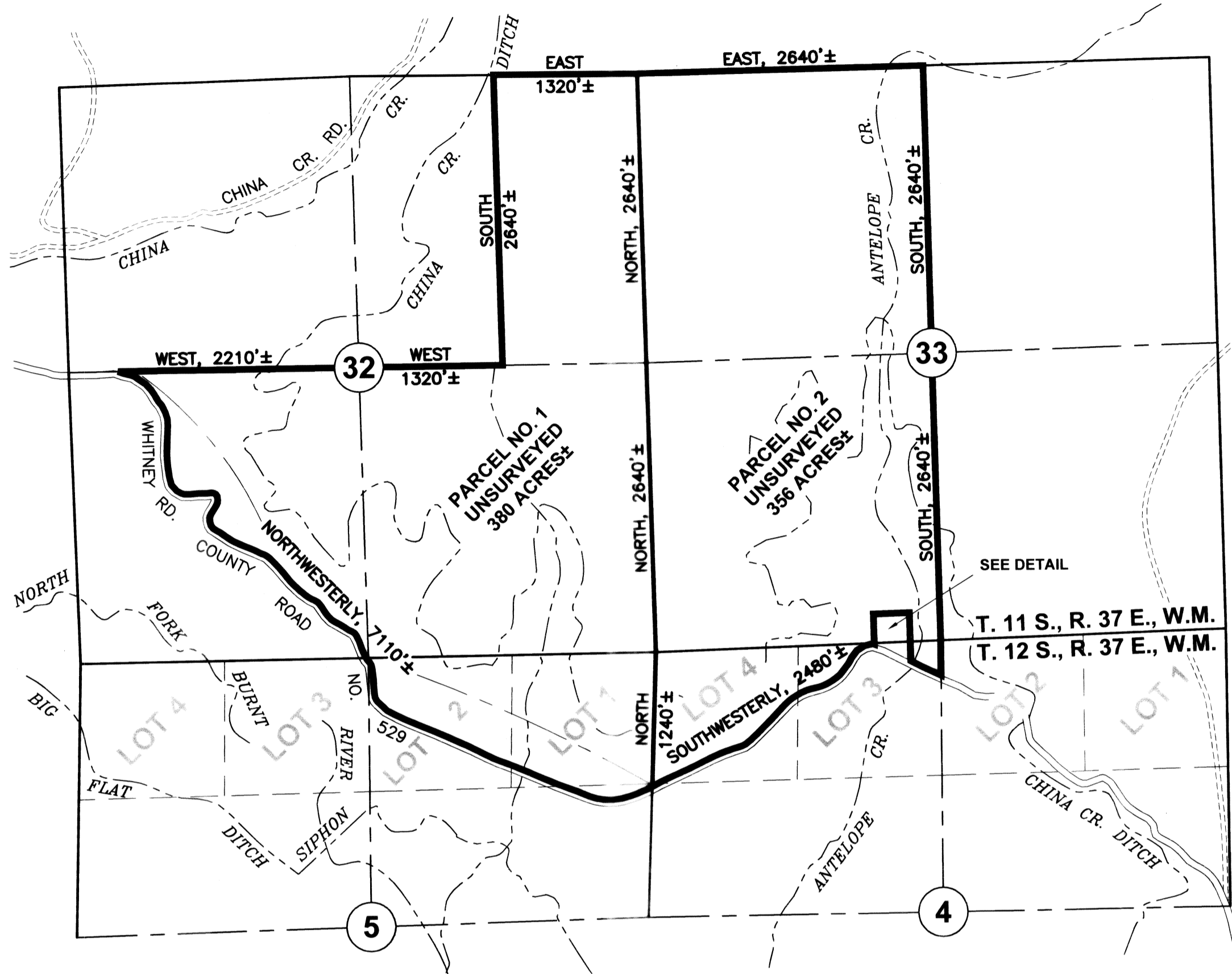
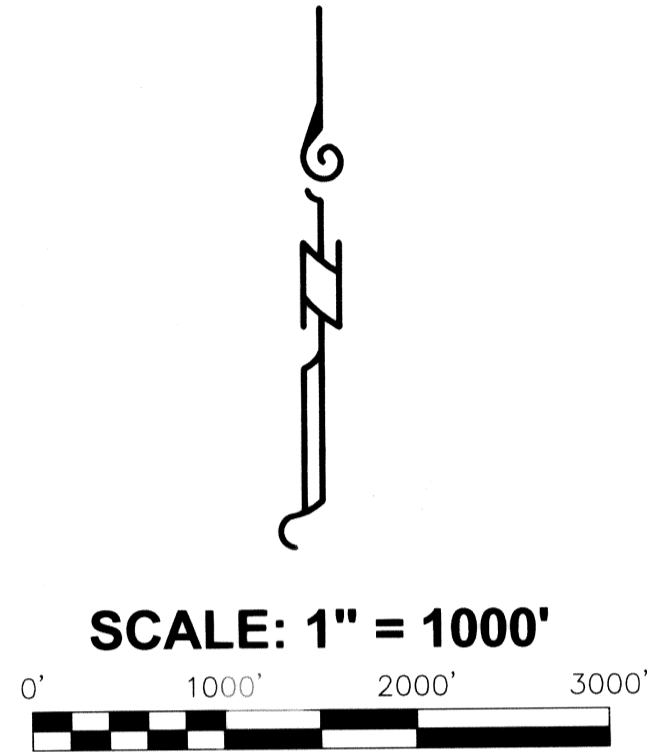
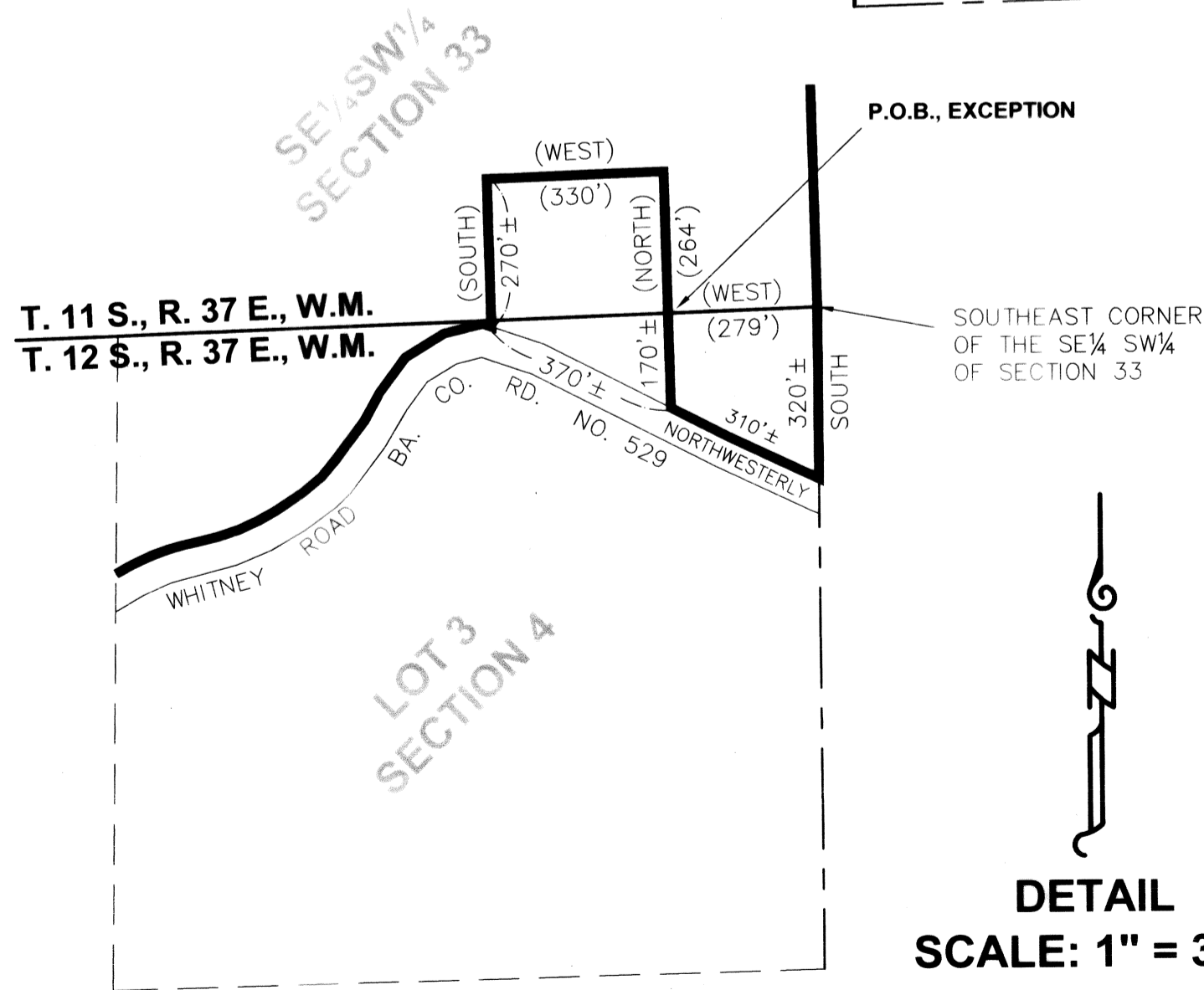


PARTITION PLAT NO. P2006-017



DISCLAIMER

The lines depicted on this map are not placed by survey and are shown only to provide a graphical representation of the attached legal descriptions.



LEGEND

() Record Data Per Ba. Co. Deed No. B06 06 0148.

HANLEY ENGINEERING, INC.
P.O. BOX 701, 2043 MAIN STREET, BAKER CITY, OREGON 97814 (541) 523-3803

REGISTERED
PROFESSIONAL
LAND SURVEYOR

Thomas J. Hanley

OREGON
JULY 13, 1979
THOMAS J. HANLEY
1817

Renews June 30, 2007