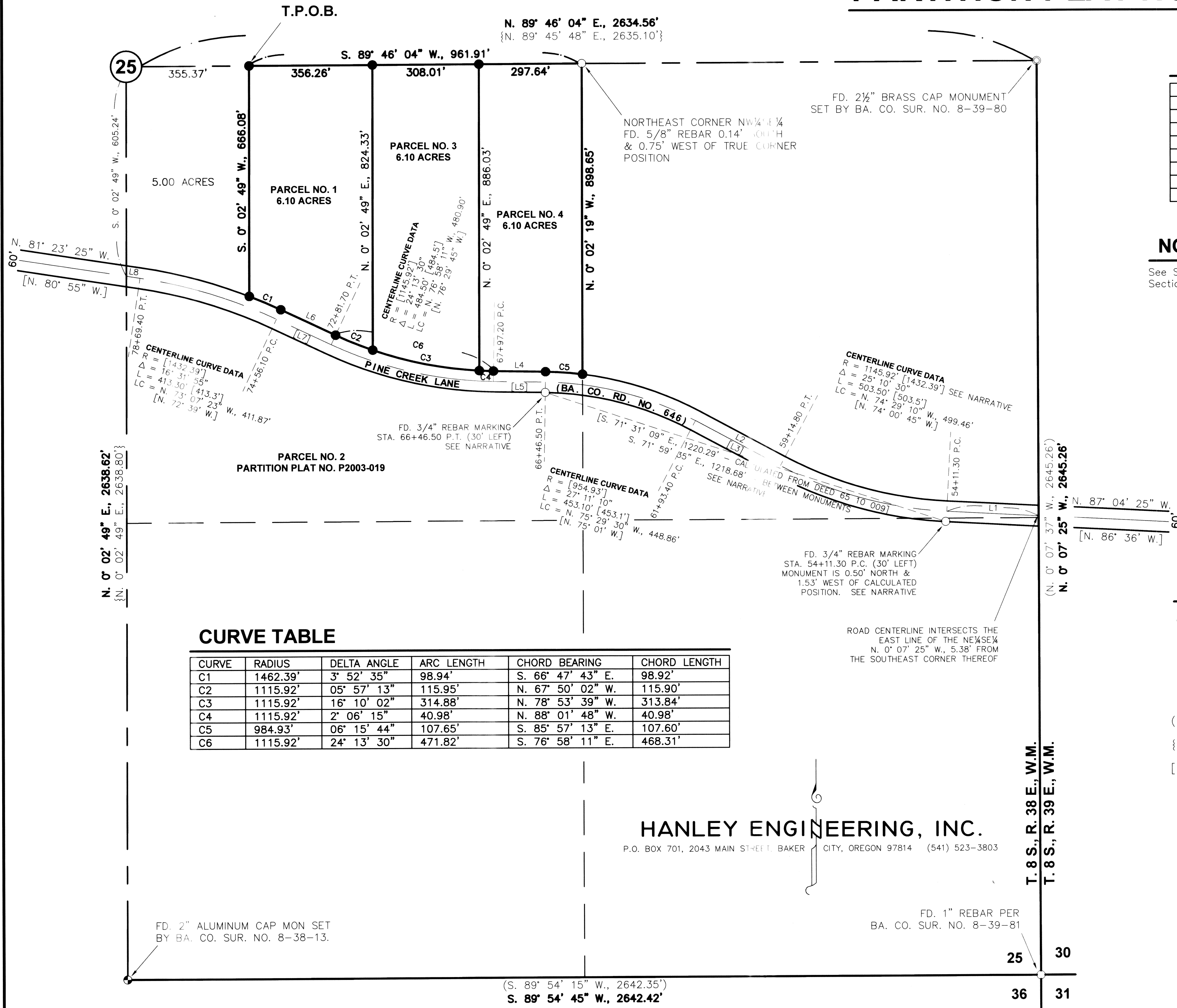


PARTITION PLAT NO. P2006-011



LINE TABLE

LINE	BEARING	DISTANCE
L1	N. 87° 04' 25" W.	266.10'
L2	N. 61° 53' 55" W.	278.60'
[L3]	[N. 61° 25' 30" W.]	[278.6']
L4	S. 89° 04' 55" E.	150.70'
[L5]	[N. 88° 36' 30" W.]	[150.7']
L6	S. 64° 51' 25" E.	174.40'
[L7]	[N. 64° 23' W.]	[174.4']
L8	N. 81° 23' 25" W.	39.81'

NOTE

See Sheet 2 of 2 for further breakdown of Section 25.

BASIS OF BEARING
Ba. Co. Sur. No. 8-38-18, North-South Mid-Section Line of Section 25 bears N. 0° 02' 49" E.

SCALE: 1" = 200'

CURVE TABLE

CURVE	RADIUS	DELTA ANGLE	ARC LENGTH	CHORD BEARING	CHORD LENGTH
C1	1462.39'	3° 52' 35"	98.94'	S. 66° 47' 43" E.	98.92'
C2	1115.92'	05° 57' 13"	115.95'	N. 67° 50' 02" W.	115.90'
C3	1115.92'	16° 10' 02"	314.88'	N. 78° 53' 39" W.	313.84'
C4	1115.92'	2° 06' 15"	40.98'	N. 88° 01' 48" W.	40.98'
C5	984.93'	06° 15' 44"	107.65'	S. 85° 57' 13" E.	107.60'
C6	1115.92'	24° 13' 30"	471.82'	S. 76° 58' 11" E.	468.31'

LEGEND

- Set 5/8" x 30" rebar with plastic cap marked "HANLEY ENGR. PLS 1817".
- Found, monument as noted.
- ⊙ Found brass cap monument as noted.
- ⊕ Found aluminum cap monument as noted.
- () Record Data Per Ba. Co. Sur. No. 8-38-52.
- { } Record Data Per Ba. Co. Sur. No. 8-38-18.
- [] Record Data Per Ba. Co. Deed No. 65-10-009.

HANLEY ENGINEERING, INC.

P.O. BOX 701, 2043 MAIN STREET, BAKER CITY, OREGON 97814 (541) 523-3803

T. 8 S., R. 38 E., W.M.
T. 8 S., R. 39 E., W.M.

REGISTERED PROFESSIONAL LAND SURVEYOR

Thomas J. Hanley
OREGON
JULY 13, 1979
THOMAS J. HANLEY
1817

Renews June 30, 2007