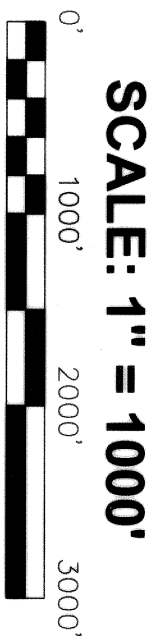
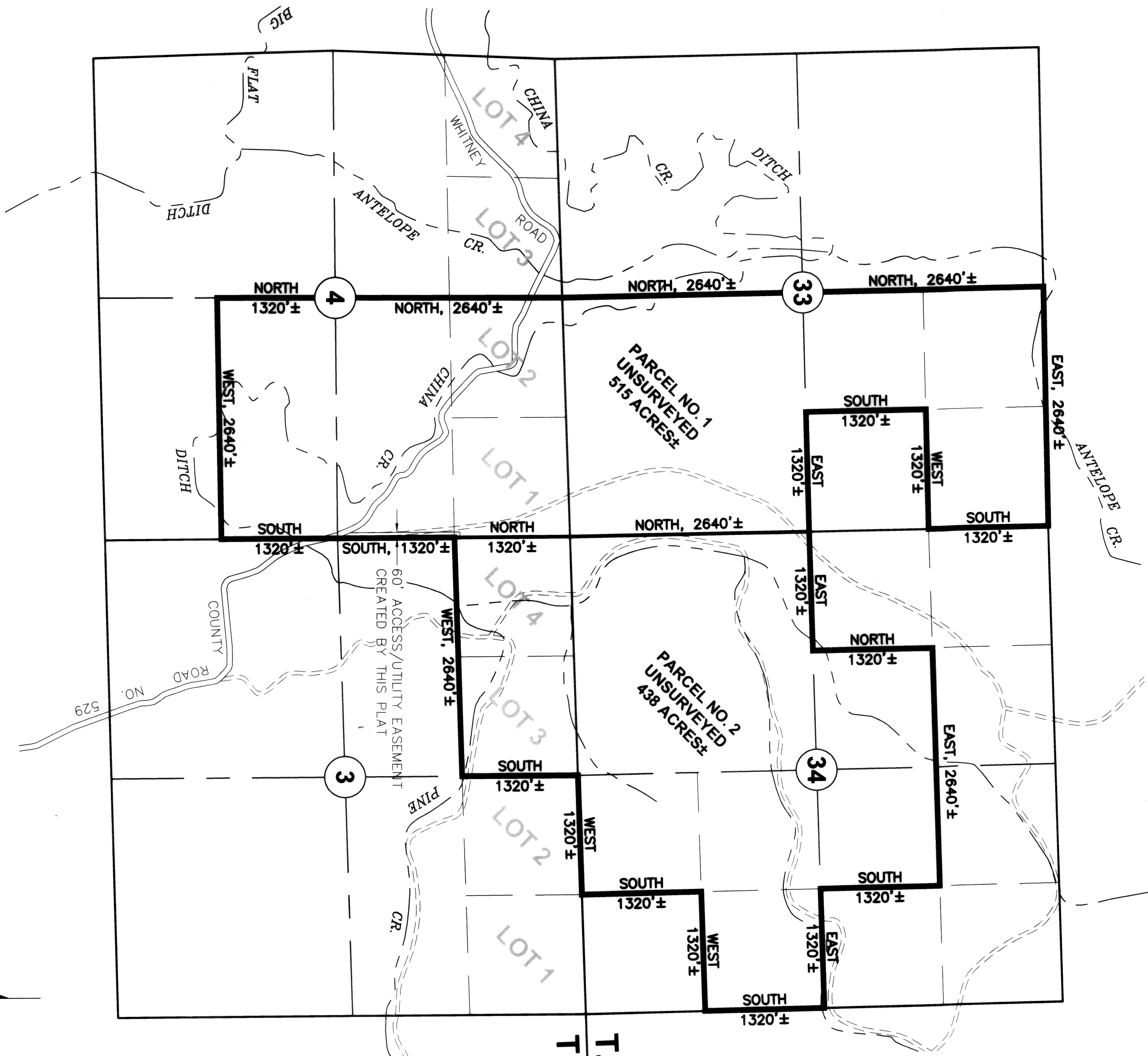


PARTITION PLAT NO. P2006-010



SCALE: 1" = 1000'



**T. 11 S., R. 37 E., W.M.
T. 12 S., R. 37 E., W.M.**

HANLEY ENGINEERING, INC.
P.O. BOX 701, 2043 MAIN STREET, BAKER
CITY, OREGON 97814 (541) 523-3803

**REGISTERED
PROFESSIONAL
LAND SURVEYOR**
Thomas J. Hanley
OREGON
JULY 13, 1979
THOMAS J. HANLEY
1817

Renews June 30, 2007