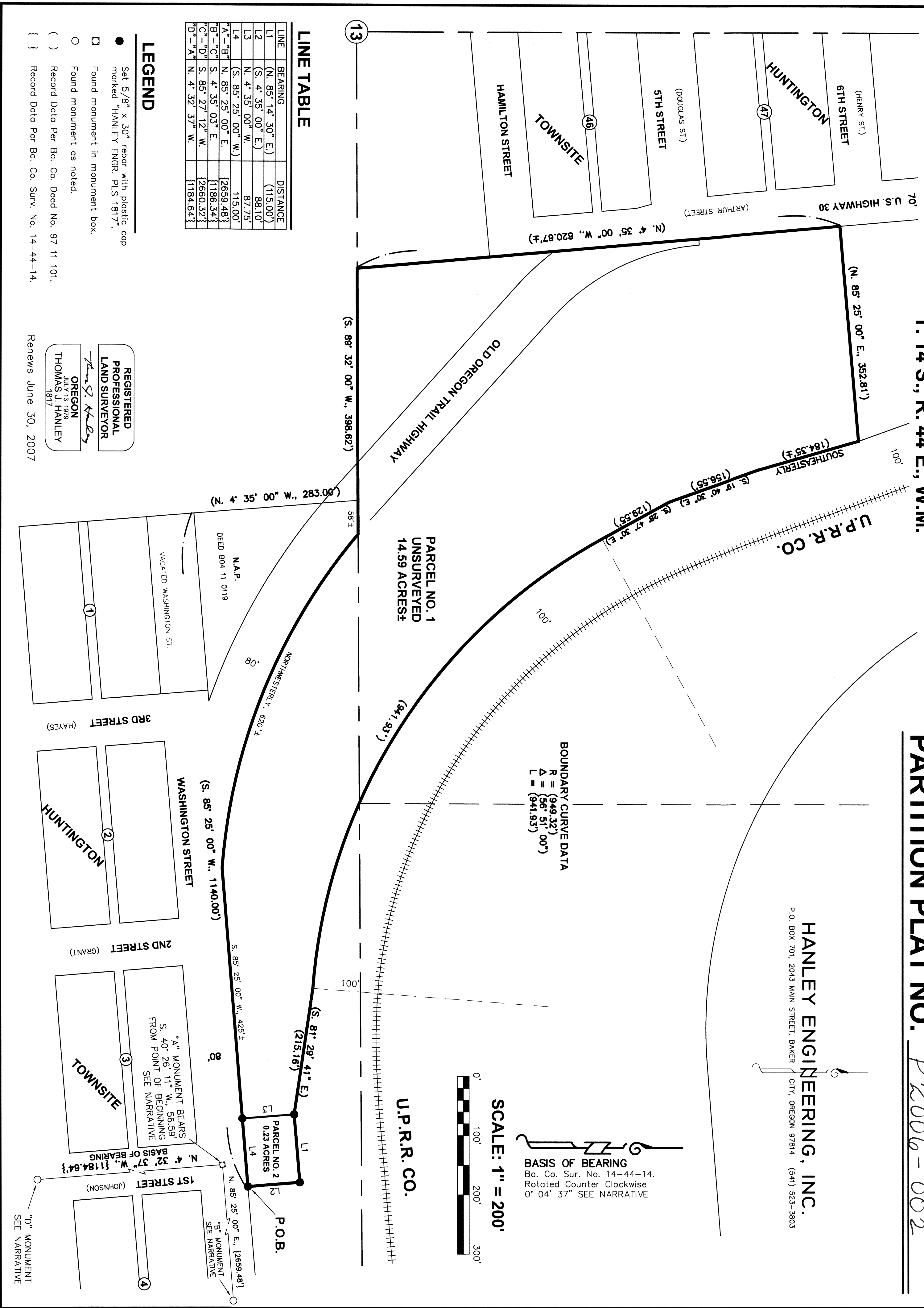


T. 14 S., R. 44 E., W.M.

PARTITION PLAT NO. P 2006-002

HANLEY ENGINEERING, INC.
P.O. BOX 701, 2043 MAIN STREET, BAKER CITY, OREGON 97814 (541) 523-3903



LINE TABLE

| LINE | BEARING | DISTANCE |
|------|---------------------|-----------|
| L1 | (N. 85° 14' 30" E.) | (115.00') |
| L2 | (S. 4° 35' 00" E.) | 88.10' |
| L3 | (N. 4° 35' 00" W.) | 87.75' |
| L4 | (S. 85° 25' 00" W.) | 115.00' |
| A-B | (N. 85° 25' 00" E.) | {2659.48} |
| B-C | (S. 4° 35' 03" E.) | {1186.34} |
| C-D | (S. 85° 27' 12" W.) | {2660.32} |
| D-A | (N. 4° 32' 37" W.) | {1184.64} |

LEGEND

- Set 5/8" x 30" rebar with plastic cap marked "HANLEY ENGR. PLS 1817".
- Found monument in monument box.
- Found monument as noted.
- () Record Data Per Ba. Co. Deed No. 97 11 101.
- { } Record Data Per Ba. Co. Surv. No. 14-44-14.

REGISTERED PROFESSIONAL LAND SURVEYOR
Thomas J. Hanley
OREGON
 JULY 13, 1979
THOMAS J. HANLEY
 1817

Renews June 30, 2007

BOUNDARY CURVE DATA
 R = (949.32')
 Δ = (56° 51' 00")
 L = (941.93')

SCALE: 1" = 200'



BASIS OF BEARING
 Ba. Co. Sur. No. 14-44-14.
 Rotated Counter Clockwise
 0° 04' 37" SEE NARRATIVE

"A" MONUMENT BEARS
 S. 40° 26' 11" W., 56.59'
 FROM POINT OF BEGINNING
 SEE NARRATIVE

"B" MONUMENT
 SEE NARRATIVE

"D" MONUMENT
 SEE NARRATIVE