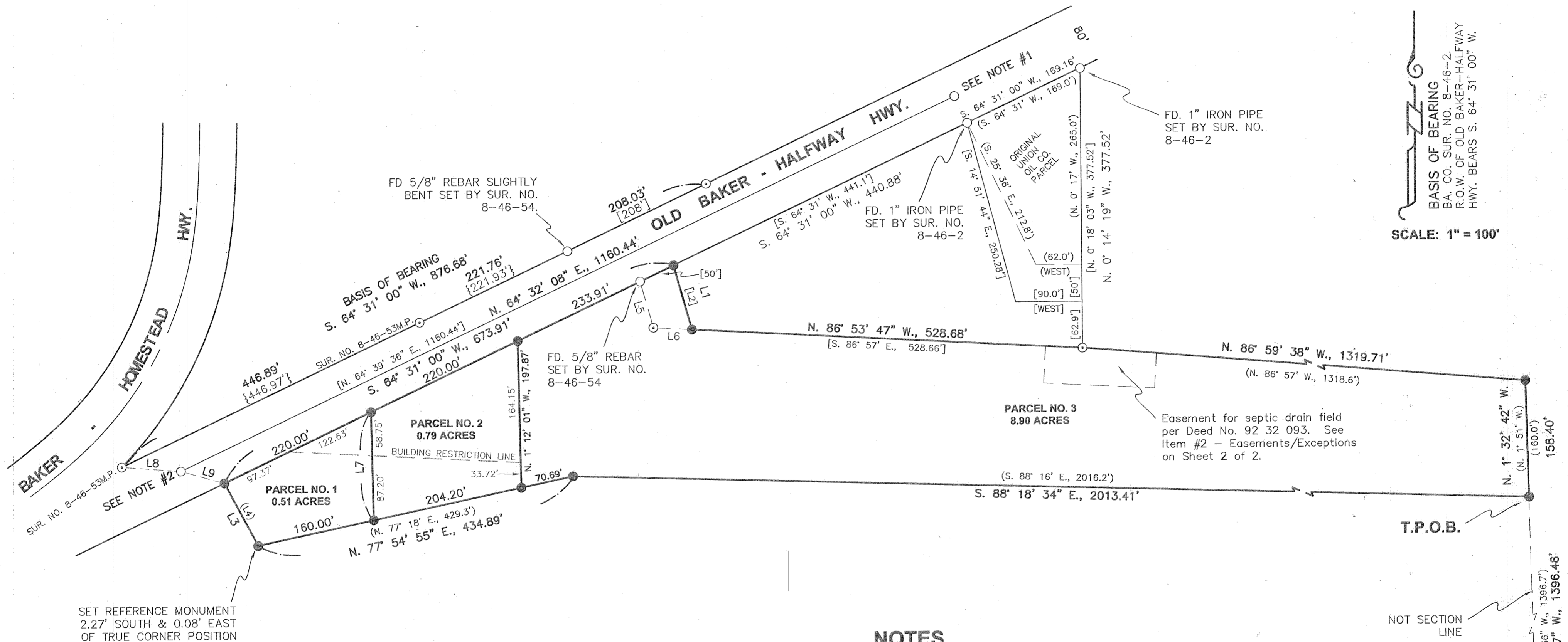


**NORTHEAST QUARTER OF SECTION 21
T. 8 S., R. 46 E., W.M.**

PARTITION PLAT NO.

P2003-017



BASIS OF BEARING
 BA. CO. SUR. NO. 8-46-2.
 R.O.W. OF OLD BAKER-HALFWAY
 HWY. BEARS S. 64° 31' 00" W.

SCALE: 1" = 100'

SET REFERENCE MONUMENT
 2.27' SOUTH & 0.08' EAST
 OF TRUE CORNER POSITION

LINE TABLE

LINE	BEARING	DISTANCE
L1	N. 15° 47' 36" W.	90.30'
[L2]	[S. 15° 55' W.]	[90.36']
L3	S. 28° 04' 27" E.	96.06'
(L4)	(S. 28° 10' E.)	(100.2')
L5	N. 15° 47' 36" E.	65.00'
L6	S. 86° 53' 47" E.	52.09'
L7	N. 1° 12' 01" W.	145.95'
L8	S. 85° 42' 21" E.	80.24'
L9	S. 73° 25' 07" E.	61.55'

NOTES

1. Found 5/8" rebar with yellow plastic cap (cap illegible) per Baker County Survey No. 8-46-54. Monument is not on the centerline of Old Baker-Halfway Highway. Monument is 39.77 feet from the Southerly Right of Way and 40.23 feet from the Northerly Right of Way.
2. Found 5/8" rebar with yellow plastic cap (cap illegible) per Baker County Survey No. 8-46-54. Monument is not on the centerline of Old Baker-Halfway Highway. Monument is 40.15 feet from the Southerly Right of Way and 39.85 feet from the Northerly Right of Way.

LEGEND

- Set 5/8" rebar with plastic cap marked "HANLEY ENGR. PLS 1817".
- Fence Corner Occupies Corner Position No Monument Set This Survey.
- ⊙ Found, 5/8" rebar with plastic cap marked "HANLEY ENGR. PLS 1206" set by Sur. No. 8-46-54 unless otherwise noted.
- Found, monument as noted.
- () Record Data Per Ba. Co. Surv. No. 8-46-2.
- [] Record Data Per Ba. Co. Surv. No. 8-46-54.
- { } Record Data Per Ba. Co. Partition Plat No. P2000-003.

HANLEY ENGINEERING, INC.
 P.O. BOX 701, 2043 MAIN STREET, BAKER CITY, OREGON 97814 (541) 523-3803

REGISTERED PROFESSIONAL LAND SURVEYOR
Thomas J. Hanley
OREGON
 JULY 13, 1979
THOMAS J. HANLEY
 1817

Renews June 30, 2005