

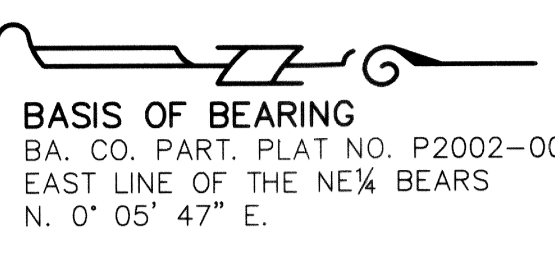
PARTITION PLAT NO. P2003 - 009

T. 8 S., R. 39 E., W.M.

(N. 89° 38' 59" E., 2710.41')

FOUND 1/8" REBAR
PER SUR. NO. 8-39-7.

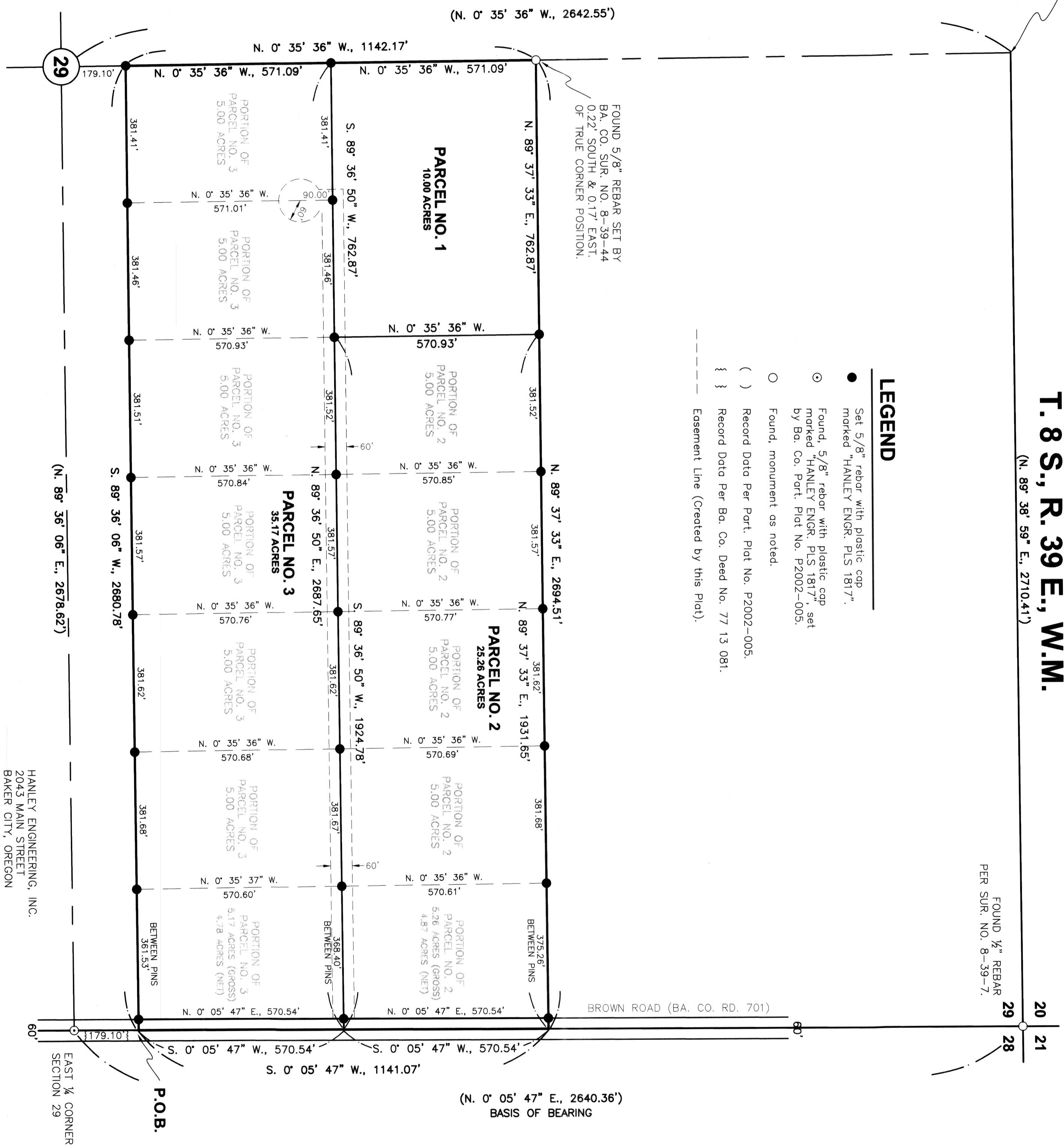
NORTH 1/4 CORNER
SECTION 29



SCALE: 1" = 200'

LEGEND

- Set 5/8" rebar with plastic cap marked "HANLEY ENGR. PLS 1817".
- Found, 5/8" rebar with plastic cap marked "HANLEY ENGR. PLS 1817", set by Ba. Co. Part. Plat No. P2002-005.
- Found, monument as noted.
- () Record Data Per Part. Plat No. P2002-005.
- { } Record Data Per Ba. Co. Deed No. 77 13 081.
- - - Easement Line (Created by this Plat).



HANLEY ENGINEERING, INC.
2043 MAIN STREET
BAKER CITY, OREGON

**REGISTERED
PROFESSIONAL
LAND SURVEYOR**

Thomas J. Hanley

OREGON
JULY 13, 1978
THOMAS J. HANLEY
1817

Renews June 30, 2003