

B03 13 0077

B03 13 0078

B03 13 0079

PARTITION PLAT NO. P2003-003

T. 9 S., R. 40 E., W.M.

NW CORNER NE $\frac{1}{4}$ NW $\frac{1}{4}$
FOUND 5/8" REBAR WITH YELLOW
PLASTIC CAP (CAP ILLEGIBLE).
SET BY BA. CO. SUR. NO. 9-40-234.

NE CORNER NE $\frac{1}{4}$ NW $\frac{1}{4}$

{N. 88° 52' 30" E., 1322.59'}

{N. 88° 52' 30" E., 1322.59'}

{S. 1° 52' 20" E., 1317.91'}

NW CORNER SECTION 15
FD. 1/2" REBAR WITH YELLOW
PLASTIC CAP IN MONUMENT
BOX. POSITION ESTABLISHED
BY BA. CO. SUR. NO. 9-40-258C.

**REGISTERED
PROFESSIONAL
LAND SURVEYOR**
Thomas J. Hanley
OREGON
JULY 13, 1979
THOMAS J. HANLEY
1817

Renews June 30, 2003

LINE TABLE

LINE	BEARING	DISTANCE
L1	N. 1° 48' 17" W.	60.00'
L2	N. 88° 38' 32" E.	107.01'
L3	N. 88° 41' 55" E.	106.98'
L4	N. 1° 49' 25" W.	73.77'
L5	N. 88° 40' 13" E.	107.00'
L6	S. 1° 47' 42" E.	98.54'
L7	N. 88° 38' 32" E.	107.01'
L8	S. 1° 48' 17" E.	60.00'
L9	S. 88° 47' 50" W.	38.53'
L10	S. 26° 40' 15" W.	62.84'

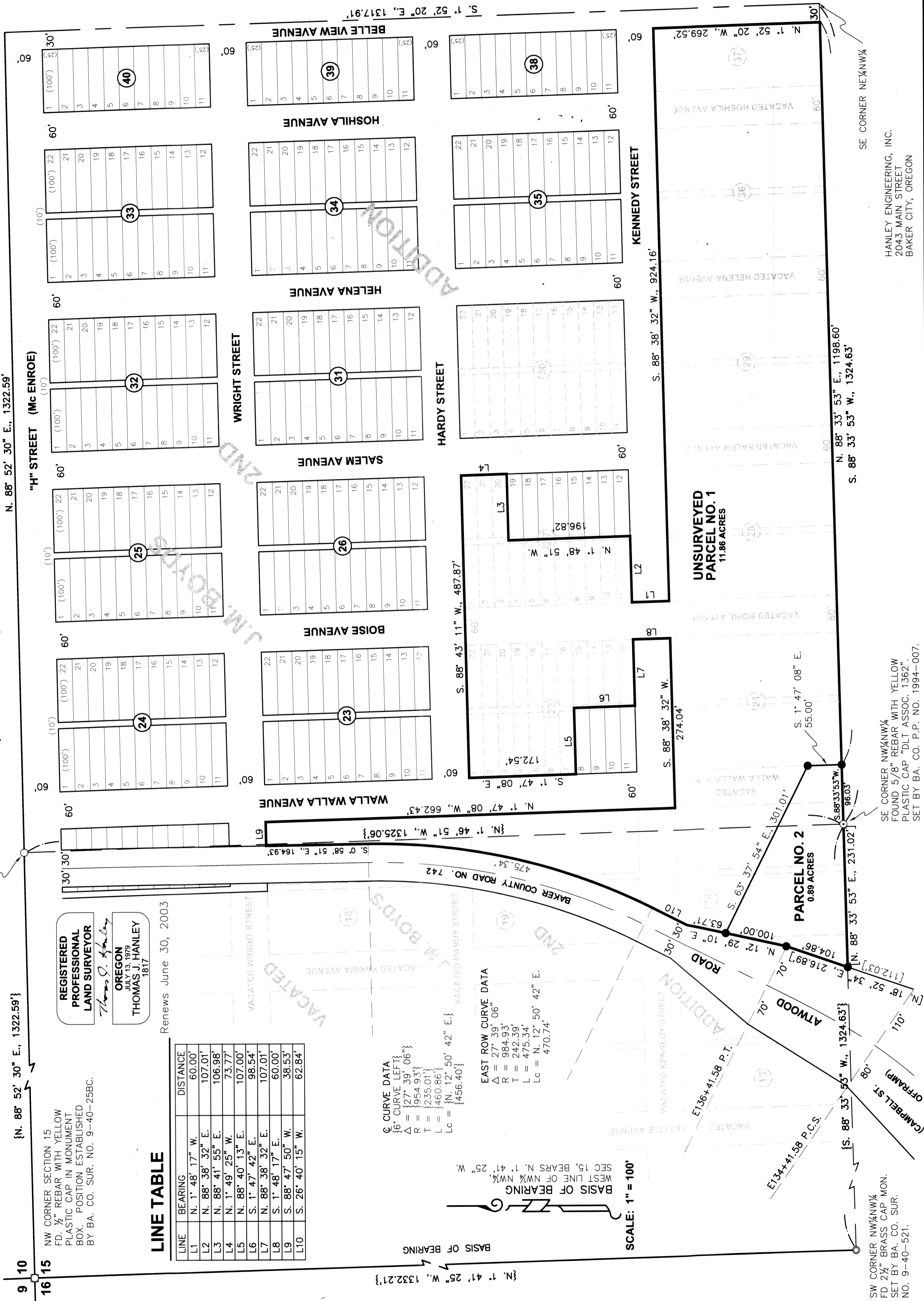
CURVE DATA
{6" CURVE LEFT}
 $\Delta = \{27^{\circ} 39' 06''\}$
 $R = \{954.93'\}$
 $T = \{235.01'\}$
 $L = \{460.86'\}$
 $Lc = \{N. 12^{\circ} 50' 42" E.\}$
 $\{456.40'\}$

EAST ROW CURVE DATA
 $\Delta = 27^{\circ} 39' 06''$
 $R = 984.93'$
 $T = 242.30'$
 $L = 475.34'$
 $Lc = N. 12^{\circ} 50' 42" E.$
 $470.74'$

SCALE: 1" = 100'

BASIS OF BEARING

{N. 1° 41' 25" W., 1332.21'}



SW CORNER NW $\frac{1}{4}$ NW $\frac{1}{4}$
FD 2 1/2" BRASS CAP MON.
SET BY BA. CO. SUR.
NO. 9-40-521.

SE CORNER NW $\frac{1}{4}$ NW $\frac{1}{4}$
FOUND 5/8" REBAR WITH YELLOW
PLASTIC CAP "DLT ASSOC. 1362"
SET BY BA. CO. P.P. NO. 1994-007.

HANLEY ENGINEERING, INC.
2043 MAIN STREET
BAKER CITY, OREGON