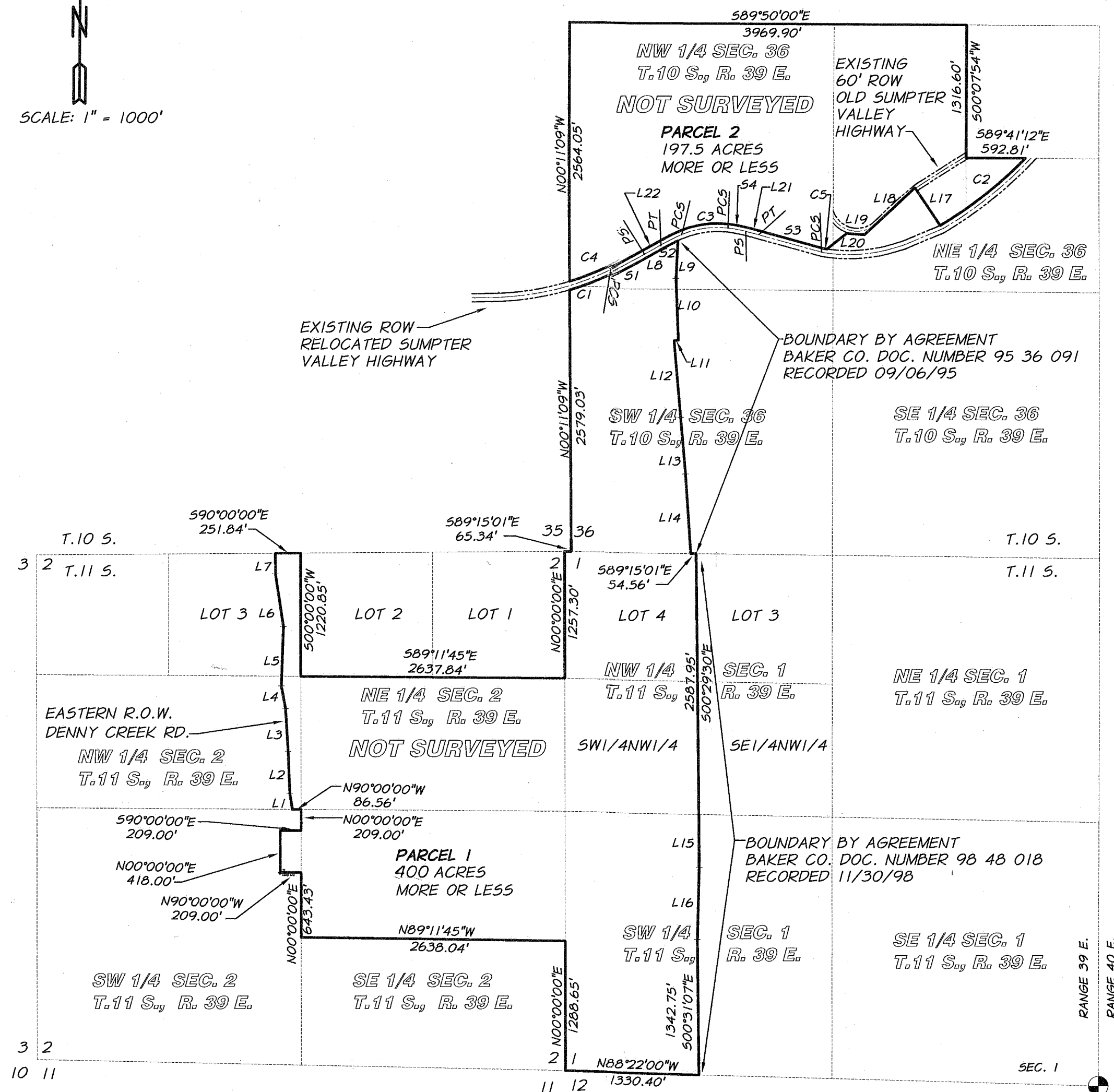
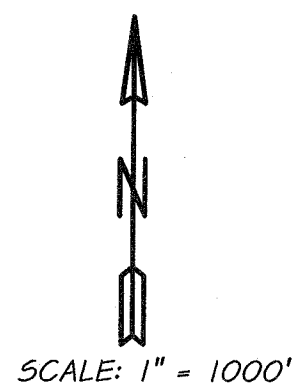


PARTITION PLAT NO. P2000-008



DITCH EASEMENT

EASEMENTS FOR DRAINAGE WAYS, IRRIGATION DITCHES AND STRUCTURES ARE CREATED BY THIS PLAT. THE EASEMENTS ARE A MINIMUM OF 30 FEET IN WIDTH, 15 FEET TO EACH SIDE OF THE CENTERLINE OF THE IRRIGATION DITCHES AND DRAINAGE WAYS AS THEY NOW EXIST ON EITHER OR BOTH OF THESE PARCELS. THESE EASEMENTS GRANT ACCESS FOR MAINTENANCE, INCLUDING ACCESS TO LARGE EARTH MOVING EQUIPMENT, AND SERVICE OF THE DIVERSION STRUCTURES AND DITCHES TO ANY PERSON WITH WATER RIGHTS UNDER THE DITCH DOWNSTREAM OF THESE PARCELS OR TO PERSONS USING THE DRAINAGE WAY.

LINE TABLE

LINE	DIRECTION	DISTANCE
L1	N09°04'10"W	162.98'
L2	N02°07'19"W	414.81'
L3	N03°26'56"W	425.53'
L4	N10°18'32"W	228.87'
L5	N02°07'53"E	588.93'
L6	N08°31'20"W	527.82'
L7	N00°23'00"W	202.62'
L8	S61°18'10"W	159.15'
L9	S03°03'40"W	370.26'
L10	S02°01'45"E	610.01'
L11	S85°02'02"W	43.24'
L12	S04°56'23"E	760.91'
L13	S04°46'14"E	567.75'
L14	S03°39'55"E	789.71'
L15	S00°24'26"E	528.17'
L16	S01°29'31"W	716.91'
L17	S34°07'09"E	447.76'
L18	N47°32'40"E	685.66'
L19	S85°44'40"E	178.80'
L20	S51°30'01"W	247.16'
L21	N74°48'50"W	328.54'
L22	S61°18'10"W	159.14'

CURVE TABLE

CURVE	RADIUS	LENGTH	TANGENT	CHORD	CHORD BEARING	DELTA
C1	2904.79'	433.32'	217.06'	432.92'	N69°33'57"E	8°32'27"
C2	4206.23'	1083.39'	544.71'	1080.40'	S52°11'08"W	14°45'27"
C3	994.94'	481.33'	245.47'	476.85'	S82°21'51"W	27°43'06"
C4	2824.79'	397.43'	199.04'	397.10'	N69°20'39"E	08°03'40"
C5	1597.02'	34.85'	17.43'	34.85'	N81°38'35"W	01°15'01"

SPIRAL TABLE

SPIRAL	SPIRAL LENGTH	α VALUE PER STA.	DEGREE OF SPIRAL
S1	400'	0.5	4° 00'
S2	300'	2.0	9° 00'
S3	350'	1.0	6° 30'
S4	300'	2.0	9° 00'

NOTES

1. ALL BEARINGS ARE TRUE NORTH BEARINGS, ALL DISTANCES ARE GROUND DISTANCES.

LEGEND

● FOUND MONUMENT AS DESCRIBED HEREON

DATE OF SURVEY: APRIL 2000

REFERENCES

ELKHORN TITLE COMPANY PRELIMINARY TITLE REPORT #11431, DATED 09-21-99
 BAKER COUNTY RECORD OF MONUMENTATION NUMBER 11-39-22 (DATED 9-15-86)
 NUMBER 11-39-24 (DATED 9-15-86)
 ORIGINAL BLM TOWNSHIP PLATS T10S R39E T11S R39E T10S R40E T11S R40E
 BAKER CO. DOC. NUMBER 95 36 091
 BAKER CO. DOC. NUMBER 98 48 018

FOUND 3 1/4" BLM BRASS CAP BAKER CO. MON. REC. 11-39-22 FILED 9-15-86

FOUND 2 1/2" ALUMINUM CAP BAKER CO. MON. REC. 11-39-24 FILED 9-15-86

MINOR LAND PARTITION IN SEC. 36 T10S, R39E AND SECS. 1 AND 2 T11S, R39E, W.M., BAKER COUNTY, OREGON

GERALD J. DIAS
 20799 SUMPTER STAGE HWY.
 BAKER CITY, OREGON 97814

SCALE: 1" = 1000'
 DATE: OCT. 2000
 JOB NO. 2724-10

Anderson Perry
 & Associates, Inc.
 ENGINEERING • SURVEYING • MATERIALS TESTING
 LA GRANDE, OR. WALLA WALLA, WA. BAKER CITY, OR.

SHEET **1/2**