

EXHIBIT C

8009 59 52 288

8009 59 52 288

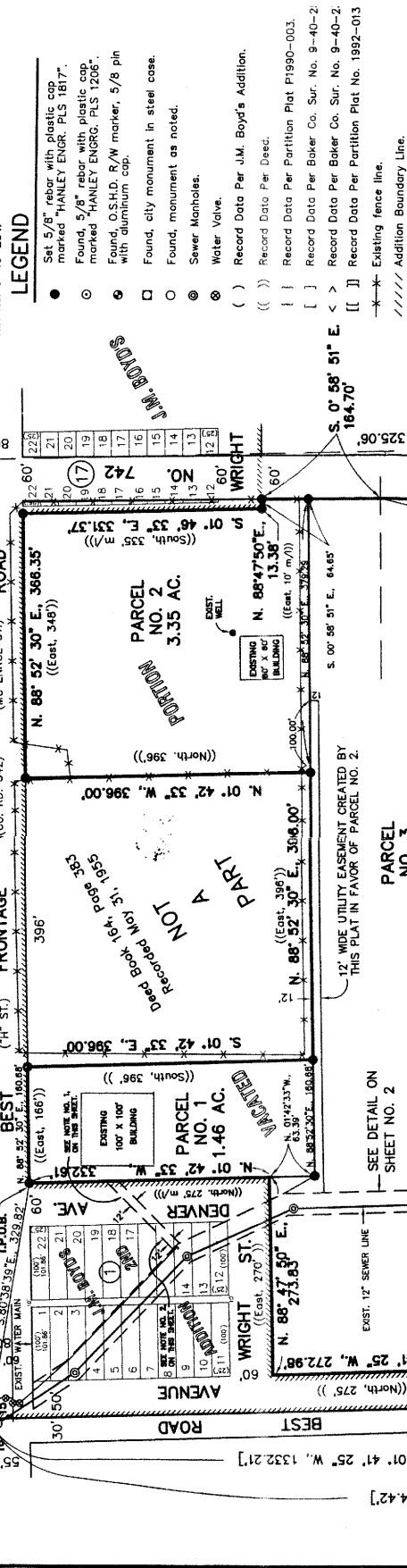
P.O.B.
NW Corner
Sec. 15

NW¼ NW¼ SEC. 15, T. 9 S., R. 40 E., W.M.
PARCEL NO. 2 OF PARTITION PLAT P 1991-008.
(N. 88° 52' 30" E., 1322.58')

PARTITION PLAT NO. P 1999-015

NE Corner NW¼ NW¼
Sec. 15, set by Baker
Co. Sur. No. 9-40-234.

NE Corner NW¼ NW¼
Sec. 15, set by Baker
Co. Sur. No. 9-40-234.



12' WIDE UTILITY EASEMENT CREATED BY THIS PLAT IN FAVOR OF PARCEL NO. 2.

SEE DETAIL ON SHEET NO. 2

30 foot wide utility easement created by this plat.

12' WIDE UTILITY EASEMENT CREATED BY THIS PLAT IN FAVOR OF PARCEL NO. 2.

12' WIDE UTILITY EASEMENT CREATED BY THIS PLAT IN FAVOR OF PARCEL NO. 2.

12' WIDE UTILITY EASEMENT CREATED BY THIS PLAT IN FAVOR OF PARCEL NO. 2.

12' WIDE UTILITY EASEMENT CREATED BY THIS PLAT IN FAVOR OF PARCEL NO. 2.

12' WIDE UTILITY EASEMENT CREATED BY THIS PLAT IN FAVOR OF PARCEL NO. 2.

12' WIDE UTILITY EASEMENT CREATED BY THIS PLAT IN FAVOR OF PARCEL NO. 2.

12' WIDE UTILITY EASEMENT CREATED BY THIS PLAT IN FAVOR OF PARCEL NO. 2.

12' WIDE UTILITY EASEMENT CREATED BY THIS PLAT IN FAVOR OF PARCEL NO. 2.

12' WIDE UTILITY EASEMENT CREATED BY THIS PLAT IN FAVOR OF PARCEL NO. 2.

12' WIDE UTILITY EASEMENT CREATED BY THIS PLAT IN FAVOR OF PARCEL NO. 2.

12' WIDE UTILITY EASEMENT CREATED BY THIS PLAT IN FAVOR OF PARCEL NO. 2.

12' WIDE UTILITY EASEMENT CREATED BY THIS PLAT IN FAVOR OF PARCEL NO. 2.

LEGEND

- Set 5/8" rebar with plastic cap marked "HANLEY ENGR. PLS 1817"
- Found, 5/8" rebar with plastic cap marked "HANLEY ENGR. PLS 1206"
- Found, O.S.H.D. R/W marker, 5/8 pin with aluminum cap.
- Found, city monument in steel case.
- Found, monument as noted.
- ⊙ Sewer Manholes.
- ⊙ Water Valve.
- () Record Data Per J.M. Boyd's Addition.
- (()) Record Data Per Deed.
- [] Record Data Per Partition Plat P1990-003.
- [] Record Data Per Baker Co. Sur. No. 9-40-2.
- [] Record Data Per Baker Co. Sur. No. 9-40-2.
- [] Record Data Per Partition Plat No. 1992-013.
- *** Existing fence line.
- //// Addition Boundary Line.

REFERENCES

- Baker County Deed 88 28 053.
- Baker County Deed 88 20 124, also filed in Baker County Court Journal, Book "C" Page 415, recorded dated August 12, 1910.
- Baker County Deed Book 154, Page 383 recorded dated May 31, 1955.
- J.M. Boyd's Second Addition to Baker City, O.D.O.T. Highway Drawing No. 1A-21-12.
- Baker County Partition Plat No. P 1990-003.
- Baker County Partition Plat No. P 1991-008.
- Baker County Partition Plat No. P 1992-013.
- Baker County Partition Plat No. P 1994-007.
- Baker County Survey Number 9-40-259C.
- Baker County Survey Number 9-40-41BC.
- Baker County Survey Number 9-40-234.
- Baker County Survey Number 9-40-476.

NOTES:

1. Water and sewer lines may cross Denver Street under Baker Co. Rd. Dept. Permit No. 99-062.
2. Existing 12 foot wide utility easement. Deed 89 51 119.

Scale: 1" = 100'

Found 5/8" rebar for the SE corner of the NW¼ NW¼ of Sec. 15, set by Partition Plat No. 1994-007.

REGISTERED PROFESSIONAL LAND SURVEYOR
J.M. BOYD
OREGON
JULY 13, 1979
THOMAS P. HANLEY
1987

Renews June 30, 2001
SHEET 1 OF

Found 1/2" rebar with plastic cap marked "RPE 2808" for the SW corner of the NW¼ NW¼ of Sec. 15, set by Baker Co. Sur.

HANLEY ENGINEERING
MULTI-STATE
BAKER CITY, OREGON

WESTERLY ROAD
R/W CURVE DATA
Δ = 27° 39' 06"
R = 924.63
L = 227.63
Lc = 446.38'

ROAD CURVE DATA
Δ = 27° 39' 06"
R = 954.93
L = 235.01
Lc = N. 12° 50' 42" E., 436.40'

WESTERLY ROAD
R/W CURVE DATA
Δ = 27° 39' 06"
R = 924.63
L = 227.63
Lc = 446.38'

ROAD CURVE DATA
Δ = 27° 39' 06"
R = 954.93
L = 235.01
Lc = N. 12° 50' 42" E., 436.40'

WESTERLY ROAD
R/W CURVE DATA
Δ = 27° 39' 06"
R = 924.63
L = 227.63
Lc = 446.38'

ROAD CURVE DATA
Δ = 27° 39' 06"
R = 954.93
L = 235.01
Lc = N. 12° 50' 42" E., 436.40'

WESTERLY ROAD
R/W CURVE DATA
Δ = 27° 39' 06"
R = 924.63
L = 227.63
Lc = 446.38'

ROAD CURVE DATA
Δ = 27° 39' 06"
R = 954.93
L = 235.01
Lc = N. 12° 50' 42" E., 436.40'

WESTERLY ROAD
R/W CURVE DATA
Δ = 27° 39' 06"
R = 924.63
L = 227.63
Lc = 446.38'

ROAD CURVE DATA
Δ = 27° 39' 06"
R = 954.93
L = 235.01
Lc = N. 12° 50' 42" E., 436.40'

WESTERLY ROAD
R/W CURVE DATA
Δ = 27° 39' 06"
R = 924.63
L = 227.63
Lc = 446.38'

ROAD CURVE DATA
Δ = 27° 39' 06"
R = 954.93
L = 235.01
Lc = N. 12° 50' 42" E., 436.40'

WESTERLY ROAD
R/W CURVE DATA
Δ = 27° 39' 06"
R = 924.63
L = 227.63
Lc = 446.38'

ROAD CURVE DATA
Δ = 27° 39' 06"
R = 954.93
L = 235.01
Lc = N. 12° 50' 42" E., 436.40'