

NW¼ NW¼ SEC. 15, T. 9 S., R. 40 E., W.M.

PARCEL NO. 2 OF PARTITION PLAT P 1991-008.

PARTITION PLAT NO. P 1999-015

{N. 88° 52' 30" E., 1322.59'}

P.O.B. NW Corner Sec. 15

NE Corner NW¼ NW¼ Sec. 15, set by Baker Co. Sur. No. 9-40-234.

LEGEND

- Set 5/8" rebar with plastic cap marked "HANLEY ENGR. PLS 1817".
- Found, 5/8" rebar with plastic cap marked "HANLEY ENGR. PLS 1206".
- ⊙ Found, O.S.H.D. R/W marker, 5/8 pin with aluminum cap.
- Found, city monument in steel case.
- Found, monument as noted.
- ⊙ Sewer Manholes.
- ⊗ Water Valve.
- () Record Data Per J.M. Boyd's Addition.
- (()) Record Data Per Deed.
- { } Record Data Per Partition Plat P1990-003.
- [] Record Data Per Baker Co. Sur. No. 9-40-25BC.
- < > Record Data Per Baker Co. Sur. No. 9-40-234.
- [[]] Record Data Per Partition Plat No. 1992-013.
- Existing fence line.
- //// Addition Boundary Line.

REFERENCES

- Baker County Deed 88 28 053.
- Baker County Deed 88 20 124, also filed in Baker County Court Journal, Book "G", Page 415, recorded dated August 12, 1910.
- Baker County Deed Book 164, Page 383 recorded dated May 31, 1955.
- J.M. Boyd's Second Addition to Baker City. O.D.O.T. Highway Drawing No. 1A-21-12.
- Baker County Partition Plat No. P 1990-003.
- Baker County Partition Plat No. P 1991-008.
- Baker County Partition Plat No. P 1992-013.
- Baker County Partition Plat No. P 1994-007.
- Baker County Survey Number 9-40-25BC.
- Baker County Survey Number 9-40-41BC.
- Baker County Survey Number 9-40-234.
- Baker County Survey Number 9-40-476.

NOTES:

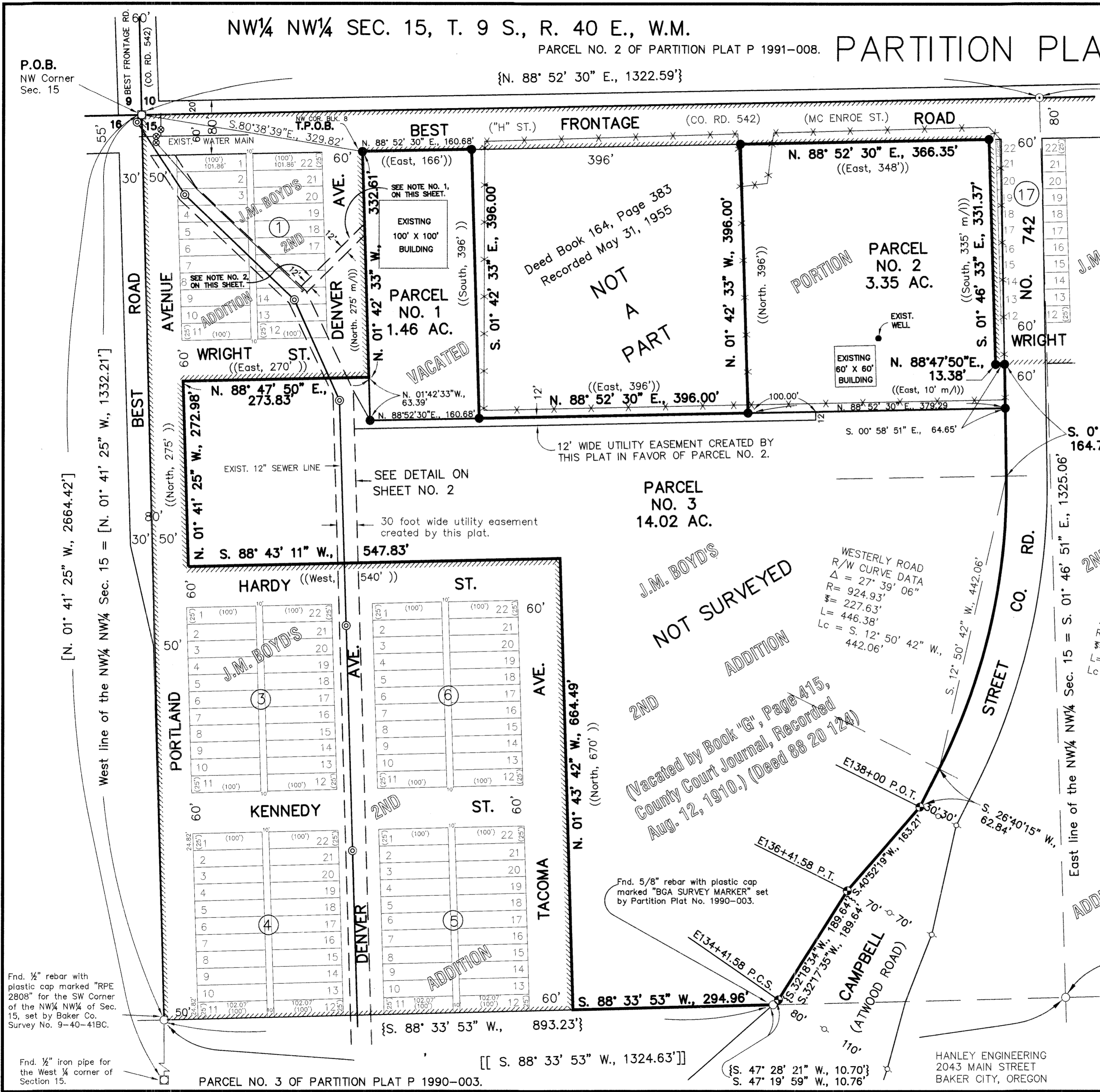
1. Water and sewer lines may cross Denver Street under Baker Co. Rd. Dept. Permit No. 99-062.
2. Existing 12 foot wide utility easement. Deed 99 51 119.

Scale: 1" = 100'

REGISTERED PROFESSIONAL LAND SURVEYOR

THOMAS J. HANLEY OREGON JULY 13, 1979 THOMAS J. HANLEY 1817

Renews June 30, 2001



[N. 01° 41' 25" W., 2664.42']

West line of the NW¼ NW¼ Sec. 15 = [N. 01° 41' 25" W., 1332.21']

Fnd. 1/2" rebar with plastic cap marked "RPE 2808" for the SW Corner of the NW¼ NW¼ of Sec. 15, set by Baker Co. Survey No. 9-40-41BC.

Fnd. 1/2" iron pipe for the West 1/4 corner of Section 15.

PARCEL NO. 3 OF PARTITION PLAT P 1990-003.

[[S. 88° 33' 53" W., 1324.63']]

{S. 47° 28' 21" W., 10.70'}
{S. 47° 19' 59" W., 10.76'}

HANLEY ENGINEERING
2043 MAIN STREET
BAKER CITY, OREGON