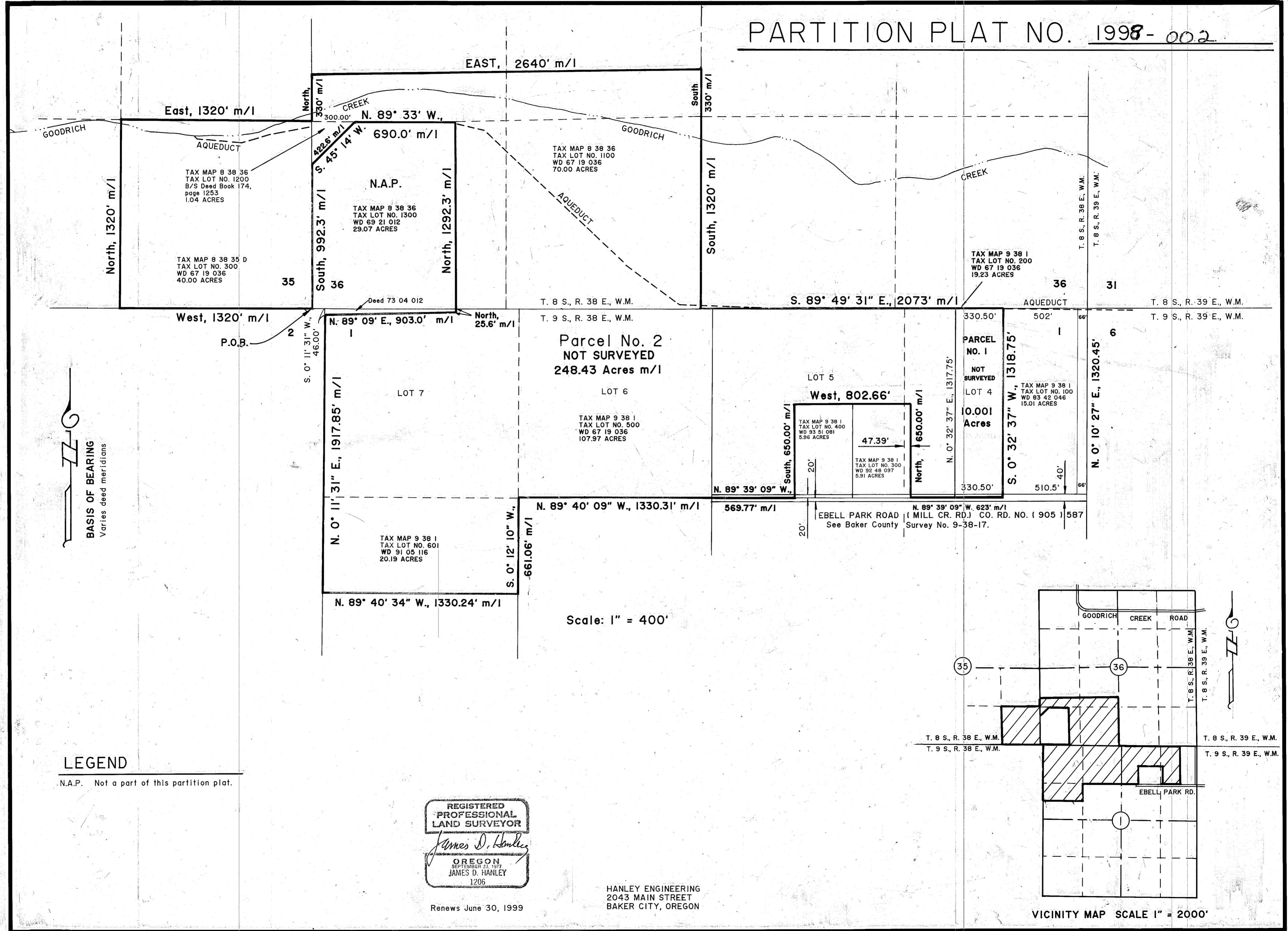


PARTITION PLAT NO. 1998-002



BASIS OF BEARING
Varies deed meridians

LEGEND
N.A.P. Not a part of this partition plat.

REGISTERED
PROFESSIONAL
LAND SURVEYOR
James D. Hanley
OREGON
SEPTEMBER 23, 1977
JAMES D. HANLEY
1206

Renews June 30, 1999

HANLEY ENGINEERING
2043 MAIN STREET
BAKER CITY, OREGON

Scale: 1" = 400'

