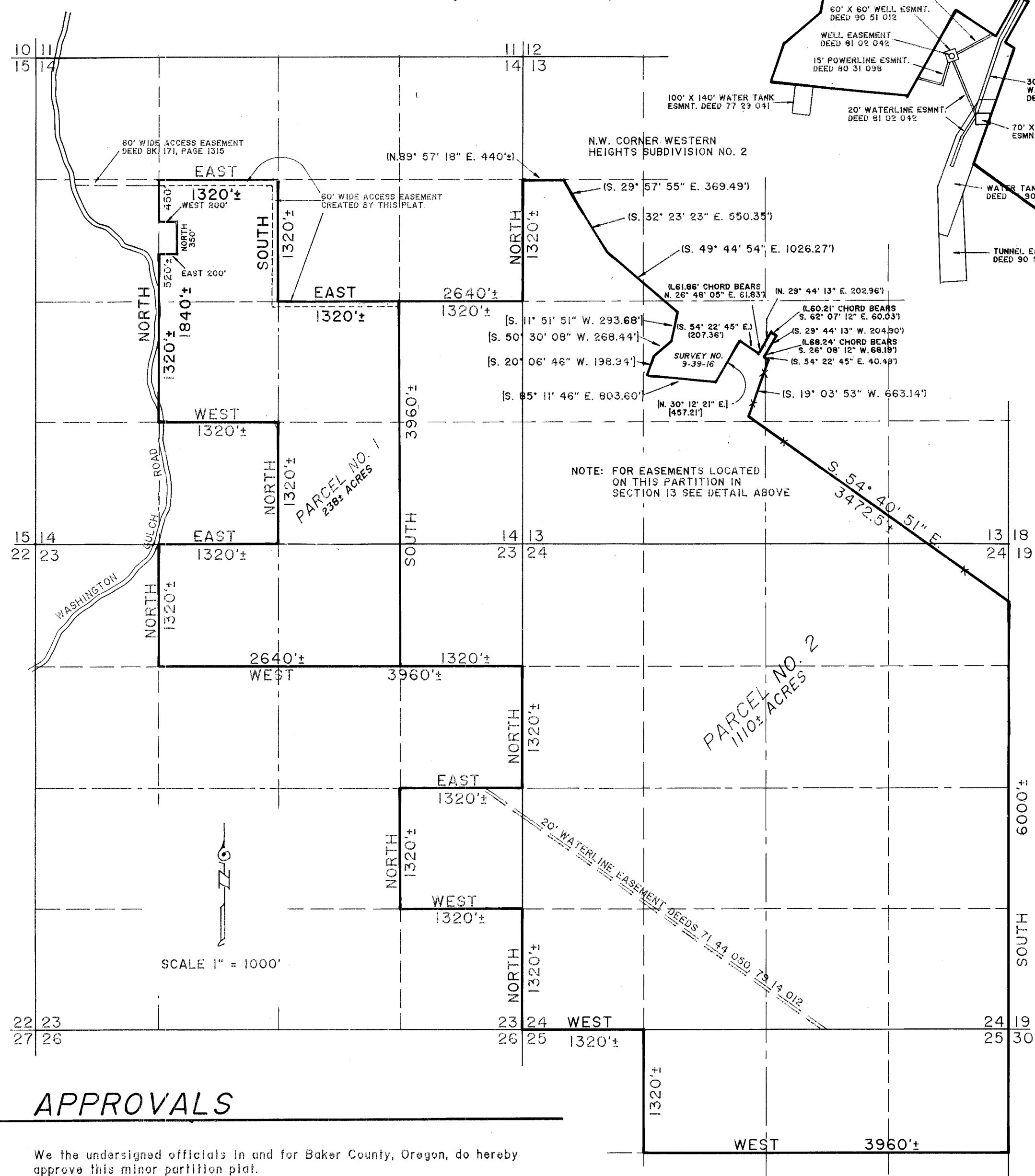


T. 9 S., R. 39 E., W.M.

SECTION 13  
EASEMENT DETAIL  
SCALE 1" = 500'

PARTITION PLAT NO. P 1992-016

SURVEYOR'S CERTIFICATE



I, James D. Hanley, hereby certify that I have correctly platted the lands represented on the annexed minor partition map in accordance with O.R.S. Chapter 92; the boundary of the partition is as follows: A parcel in Sections 13, 14, 23, 24 and 25, Township 9 South, Range 39 East, W.M.: Beginning at the Southwest corner of Section 24; thence North approximately 1320' to the S.E. corner of the NE1/4SE1/4 Section 23; thence West approximately 1320' to the S.W. corner thereof; thence North approximately 1320' to the N.W. corner thereof; thence East approximately 1320' to the N.E. corner thereof; thence North approximately 1320' to the S.E. corner NE1/4 NE1/4 of Section 23; thence West approximately 3960' along the South lines of the NE1/2NE1/4 and the NE1/4NW1/4 of Section 23 to the S.W. corner of the said NE1/4NW1/4; thence North approximately 1320' to the N.W. corner thereof; thence East approximately 1320' to the N.E. corner thereof; thence North approximately 1320' to the S.E. corner of the NE1/4SW1/4 of Section 14; thence West approximately 1320' to the S.W. corner thereof; thence North along the West line of the said NE1/4SW1/4 and the SE1/4NW1/4 approximately 1840'; thence East 200'; thence North 350'; thence West 200' to the said West line of the SE1/4NW1/4; thence North 450' to the N.W. corner thereof; thence East approximately 1320' to the N.E. corner thereof; thence South approximately 1320' to the S.E. corner thereof; thence East approximately 2640' to the S.W. corner SW1/4NW1/4 of Section 13; thence North approximately 1320' to the N.W. corner thereof; thence N. 89° 57' 18" E. along the North line of the said SW1/4 NW1/4 of Section 13 approximately 440' to the N.W. corner of Western Heights Subdivision No. 2; thence along the Southwesterly line of said subdivision the following courses; S. 29° 57' 55" E.; 369.49'; S. 32° 23' 23" E., 550.35'; S. 49° 44' 54" E., 1026.27'; thence along the boundary of a parcel shown on Baker County Survey No. 9-39-16 the following courses; S. 11° 51' 51" W., 293.68'; S. 50° 30' 08" W., 268.44'; S. 20° 06' 46" W., 198.94'; S. 85° 11' 46" E., 803.60'; N. 30° 12' 21" E., 457.21' to the most Westerly corner of Lot 12, Western Heights Subdivision No. 1; thence along the boundary of the said Subdivision No. 1 the following courses; S. 54° 22' 45" E., 207.36'; along a 602.96 foot radius curve right (the chord of which bears N. 26° 48' 05" E., 61.83') a distance of 61.86 feet; N. 29° 44' 13" E., 202.96'; along a 220.99' foot radius curve left (the chord of which bears S. 62° 07' 12" E., 60.03') a distance of 60.21 feet; S. 29° 44' 13" W., 204.90'; along a 542.96 foot radius curve left (the chord of which bears S. 26° 08' 12" W., 68.19') a distance of 68.24 feet; S. 54° 22' 45" E., 40.49'; thence along an existing fence line the following courses; S. 19° 03' 53" W., 663.14'; S. 54° 40' 51" E. approximately 3472.5' to intersect the East line of Section 24; thence South along the East line of Section 24 and Section 25 approximately 6000' to the S.E. corner of the NE1/4NE1/4 of Section 25; thence West along the South lines of the NE1/2NE1/4 and NE1/4NW1/4 of Section 25 approximately 3960' to the S.W. corner of the said NE1/4NW1/4; thence North approximately 1320' to the N.W. corner thereof; thence West approximately 1320' to the point of beginning.

REGISTERED PROFESSIONAL LAND SURVEYOR  
James D. Hanley  
OREGON  
SEPTEMBER 23, 1977  
JAMES D. HANLEY  
1206

NARRATIVE

The purpose of this plat for Patricia A. Wilson is to partition the above described land into two parcels in accordance with O.R.S. Chapter 92. The survey data shown in parenthesis are of record as shown on Western Heights Subdivisions No. 1 and No. 2. That data shown in brackets is from Baker County Survey No. 9-39-16. Other data shown are approximations. Subsequent re-survey of the parcel would result in different bearings, distances and acreages than those shown hereon.

DECLARATION AND ACKNOWLEDGEMENT

Know all people by these presents that Patricia A. Wilson is the owner of the land represented on the annexed map and more particularly described in the accompanying Surveyor's Certificate and has caused the same to be partitioned into two parcels as shown, in accordance with O.R.S. Chapter 92.

*Patricia A. Wilson*  
Patricia A. Wilson

State of Oregon }  
County of *Wash* } S.S.

On *December 1*, 1992 before me did personally appear the within named Patricia A. Wilson, who acknowledged to me that she executed the same freely and voluntarily.

*Jim Wells*  
Notary

HANLEY ENGINEERING  
2043 MAIN STREET  
BAKER CITY, OREGON

APPROVALS

We the undersigned officials in and for Baker County, Oregon, do hereby approve this minor partition plat.

County Surveyor by: *Allen T. Blackman*; Date *12/11*, 1992  
UNION COUNTY SURVEYOR

Planning approval by: *Gene McConnell*; Date *12/22*, 1992  
Planning Director

State of Oregon } S.S.  
County of Baker }

I do hereby certify that the attached minor partition plat was received for record on the *22* day of *December*, 1992, at *10:15* o'clock *A.* M., recorded in Baker County records and is hereby approved.

Baker County Clerk by: *Julia Wood*

STATEMENT OF WATER RIGHTS

There are no water rights appurtenant to this partition.