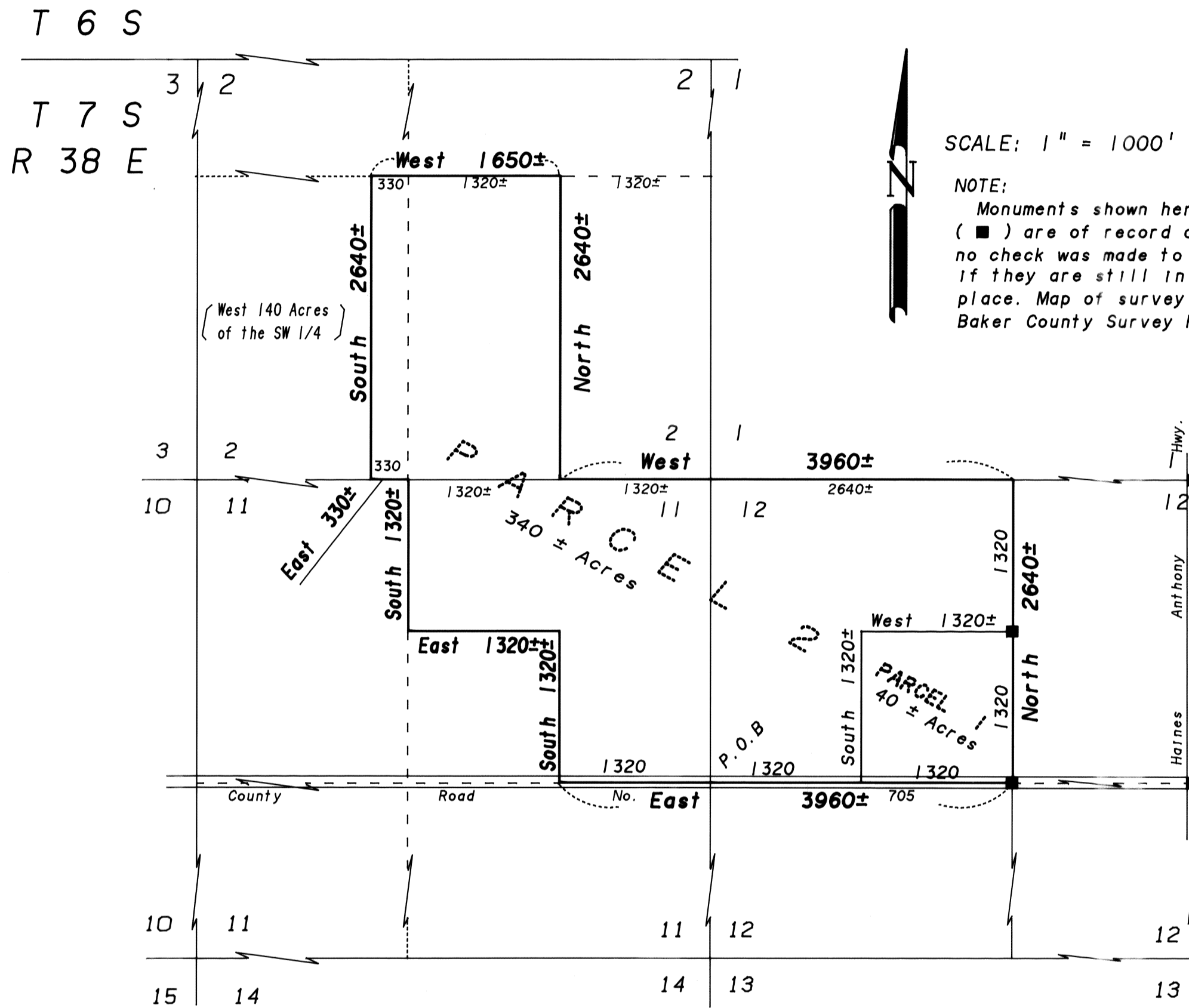


MINOR PARTITION PLAT No. P1992-001

Situated in Sections 2, 11, and 12, T 7 S, R 38 E, Willamette Meridian.

THESE PARCELS WERE NOT SURVEYED



SCALE: 1" = 1000'

NOTE:
 Monuments shown hereon
 (■) are of record only,
 no check was made to see
 if they are still in
 place. Map of survey No. 7-38-8.
 Baker County Survey Records

APPROVALS

State of Oregon
 SS
 County of Baker

I do hereby certify that the attached partition plat was received for record on the 7th day of January, 1992, at 3:20 o'clock P.M., and recorded as Partition Plat No. P1992-001 Baker County records.

Baker County Clerk

1992
Julia Woods Clark

BAKER COUNTY SURVEYOR

Approved this 7 day of January, 1992.

Baker County Surveyor

James D. Haulby

BAKER COUNTY PLANNING COMMISSION

Approved this 7 day of January, 1992.

Baker County Planning Commission

by *Lorain Clancy Director*
 Pro Tem

EASEMENTS

- Road easements for County Road no. 705.
- Utility easement Deed no. 7916090
- Right of way easement Book L Page 471.
- Easement for ditches as they exist on the tract.

WATER RIGHTS STATEMENT

Water right certificate numbers 1455, 1470,
 and 38406 are appurtenant to this tract.

REGISTERED
 PROFESSIONAL
 LAND SURVEYOR

Gregory T. Blackman

OREGON
 JULY 13, 1973
 GREGORY T. BLACKMAN
 991