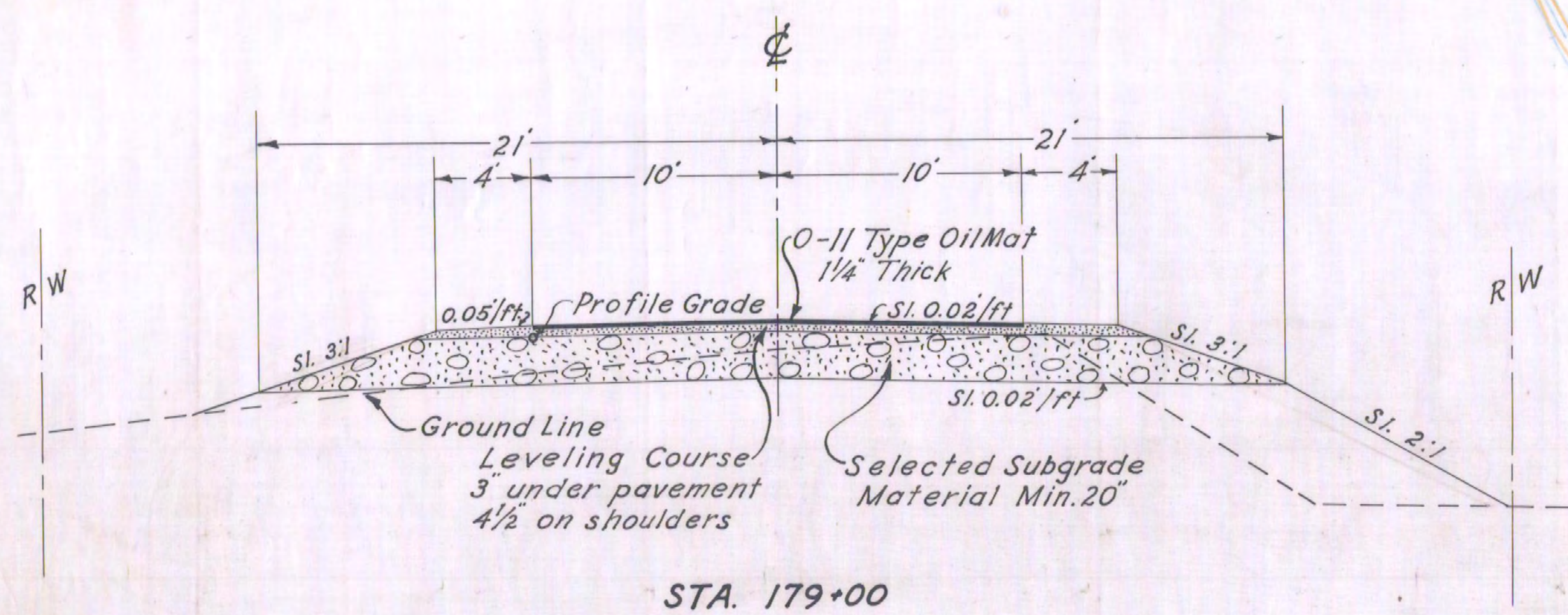


8B-1-10

DATE	
BY	
FINAL SURVEY	
DESIGNED	
NOTED	
NO. 1000	
NO.	

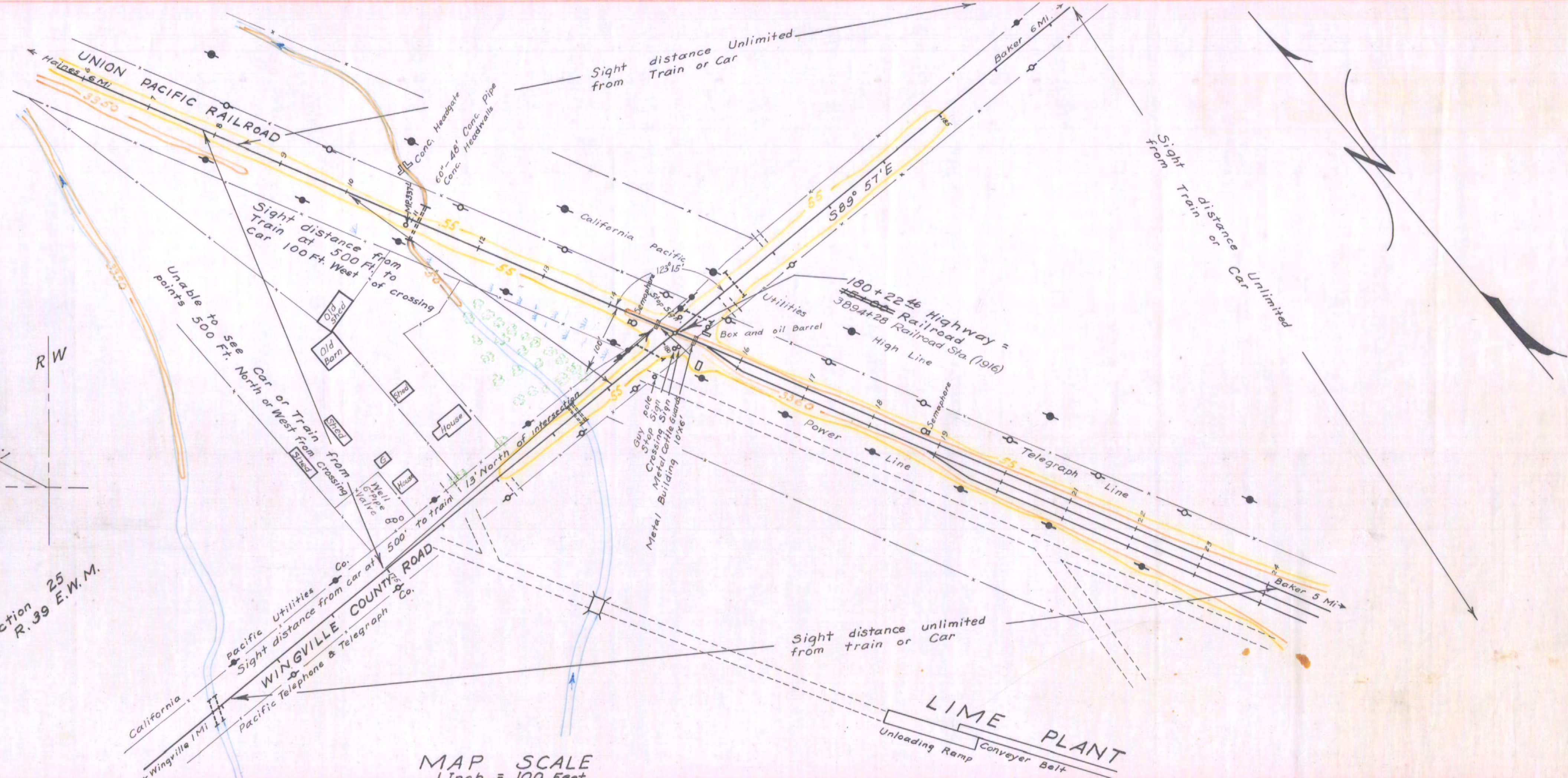
DATE	
BY	
ORIGINAL SURVEY	
DESIGNED	
NOTED	
NO. 1000	
NO.	

# TYPICAL SECTION



STA. 179+00

W 1/4 Section 25  
Twp. 85.1 R. 39 E.W.M.

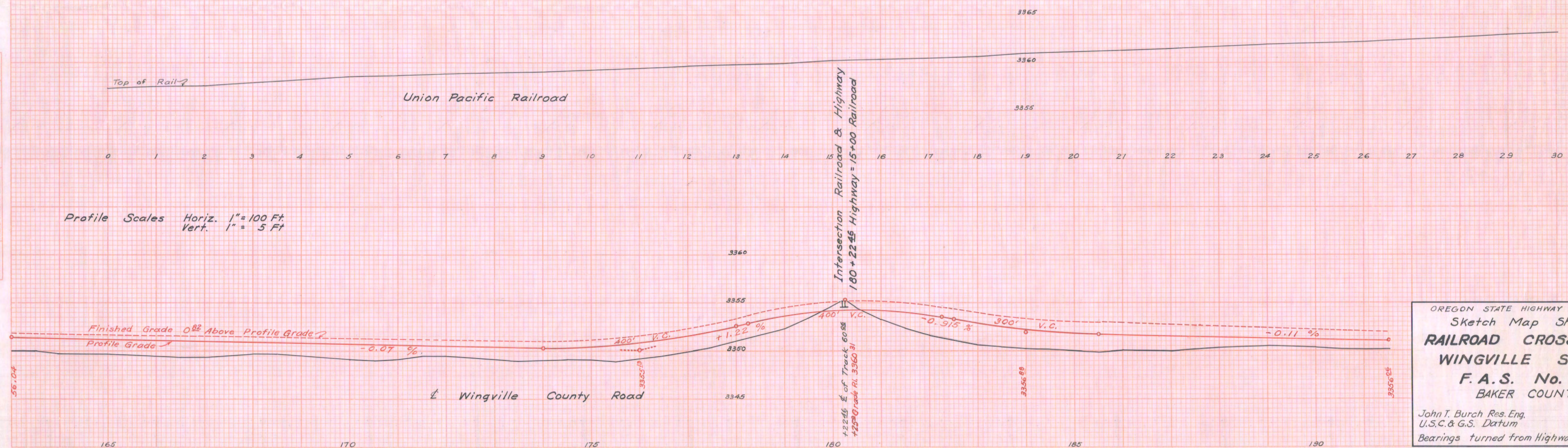


MAP SCALE  
1 Inch = 100 Feet

LIME PLANT  
Unloading Ramp  
Conveyer Belt

Top of Rail  
Union Pacific Railroad

Profile Scales Horiz. 1" = 100 Ft.  
Vert. 1" = 5 Ft.



OREGON STATE HIGHWAY DEPARTMENT  
Sketch Map Showing  
RAILROAD CROSSING ON  
WINGVILLE SECTION  
F. A. S. No. 506  
BAKER COUNTY

John T. Burch Res. Eng.  
U.S.C. & G.S. Datum  
Bearings turned from Highway  
Aug. 1957  
Scales: Hor. 1" = 100'  
Vert. 1" = 5'

8B-1-10