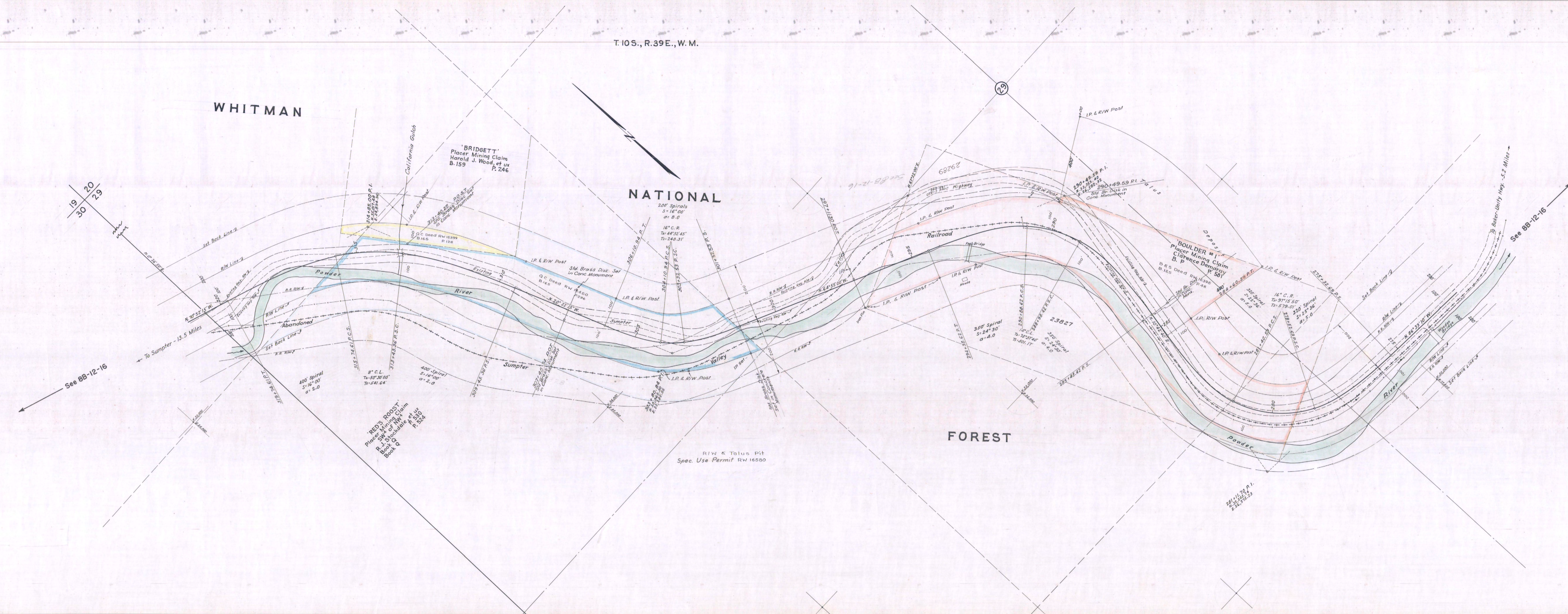


OREGON STATE HIGHWAY DEPARTMENT
Located Line
BOULDER GORGE SECTION
SUMPTER VALLEY HIGHWAY
BAKER COUNTY
Scale: 1 inch = 100 feet
Traced by H. K. E. July, 1955

TRUE BEARINGS
DRG. NO. 7B-33-19



BOULDER GORGE SECTION
DRG. NO. 7B-33-19