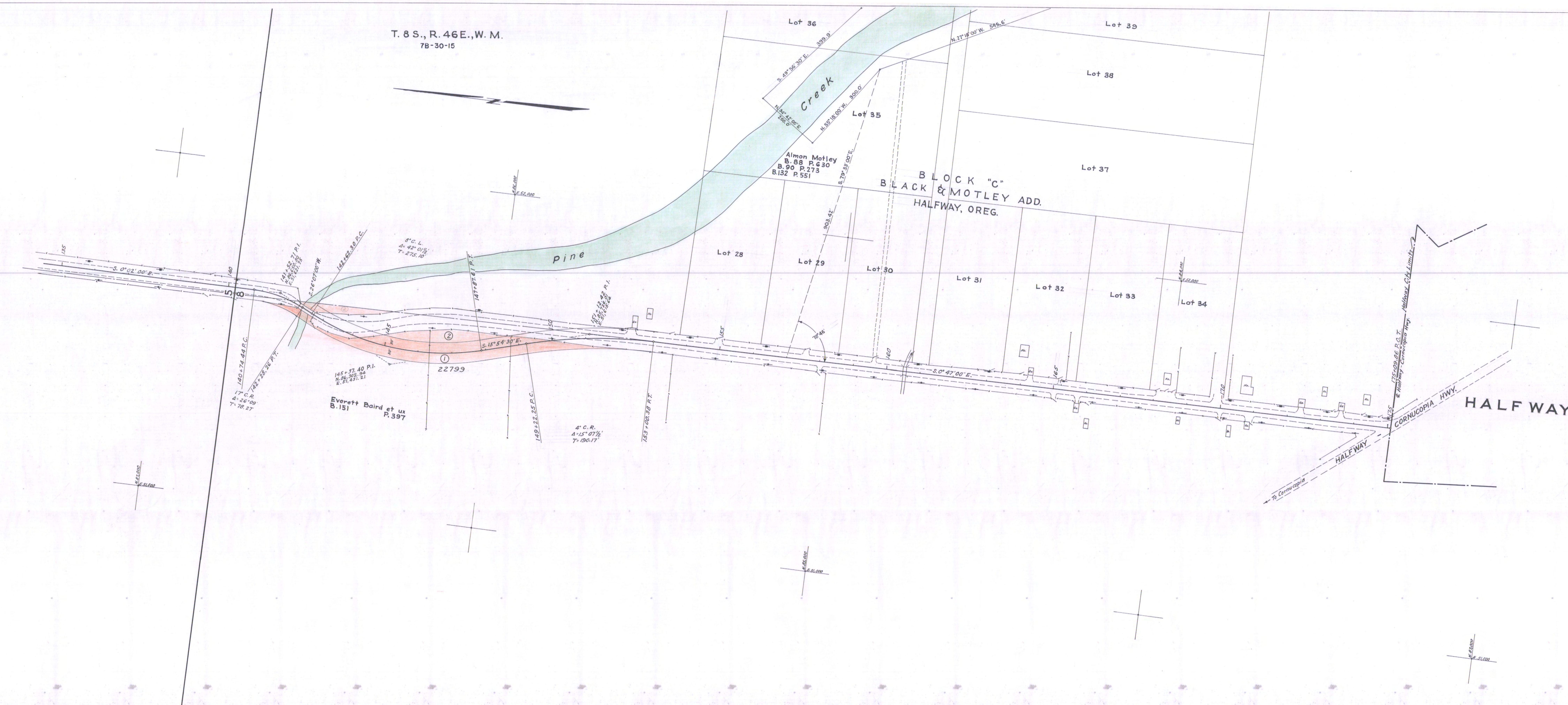


OREGON STATE HIGHWAY DEPARTMENT
Located Line
PINE CR. - HALFWAY UNIT,
FOREST BDRY. - HALFWAY SECTION
COUNTY ROAD
BAKER COUNTY
Scale: 1 inch = 100 feet
Traced by H. K. E. January, 1955

TRUE BEARINGS
DRG. NO. 7B-30-15



PINE CR. - HALFWAY UNIT,
FOREST BDRY. - HALFWAY SECTION
DRG. NO. 7B-30-15

1B-30-15

1B-30-15