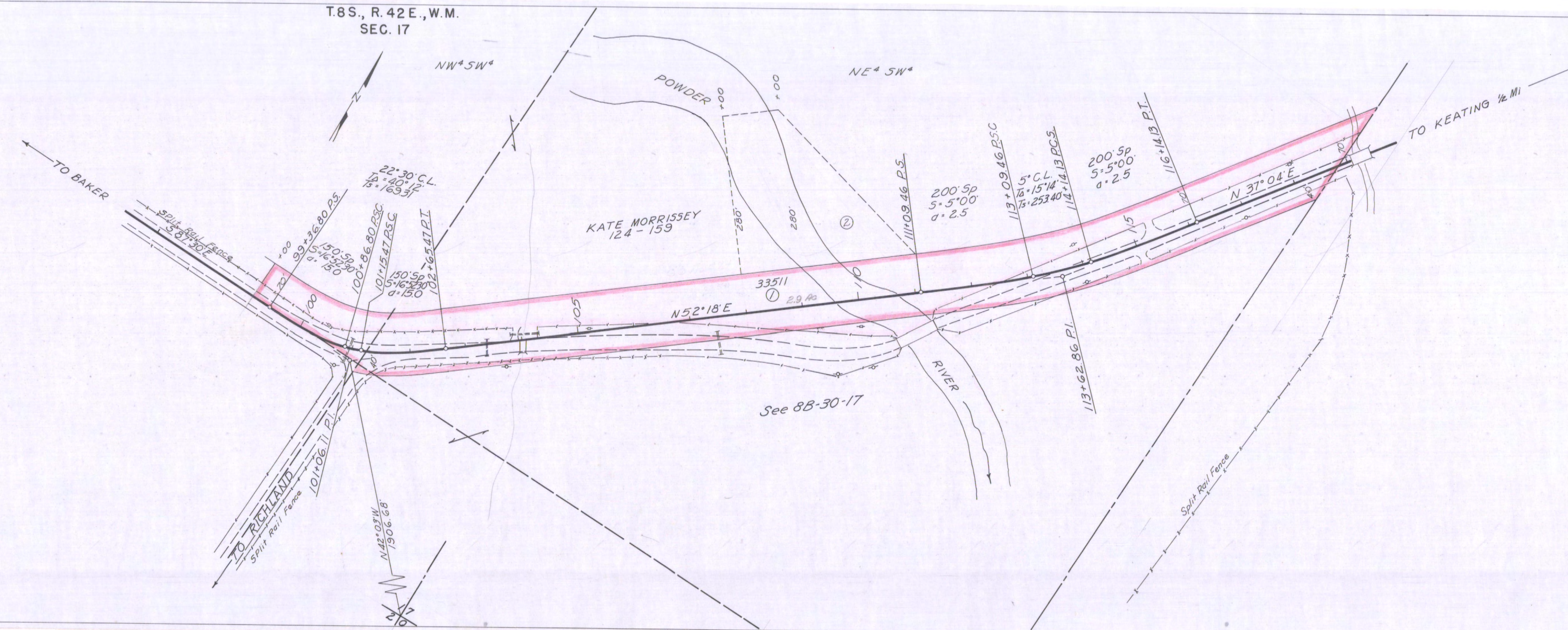


KEATING BRIDGE SEC. COUNTY ROAD Scale: 1"=100' DRG. NO. 10C-40-5

OREGON STATE HIGHWAY DEPARTMENT  
Located Line  
**KEATING BRIDGE SECTION**  
COUNTY ROAD  
BAKER COUNTY  
Scale: 1 inch = 100 feet  
Traced by L.J. May, 1961  
DRG. NO. 10C-40-5



KEATING BRIDGE SECTION  
COUNTY ROAD  
SCALE: 1"=100'  
DRG. NO. 10C-40-5

KEATING BRIDGE SEC. COUNTY ROAD Scale: 1"=100' DRG. NO. 10C-40-5