

PROJECT NO. 1532  
DRAWING DB-55-53  
SCALE 20  
FOCAL TIME  
BAKER COUNTY  
HUNTINGTON HIGHWAY  
LIME INTERCHANGE  
BURNT RIVER (DIXIE CREEK) - LIME INTERCHANGE

OREGON DEPARTMENT OF TRANSPORTATION  
Located Line

# I-84: BURNT RIVER (DIXIE CREEK) - LIME INTERCHANGE

HUNTINGTON HIGHWAY  
BAKER COUNTY  
DRAFTED BY CMZ, HDR ENGINEERING INC  
OCTOBER 17, 2006

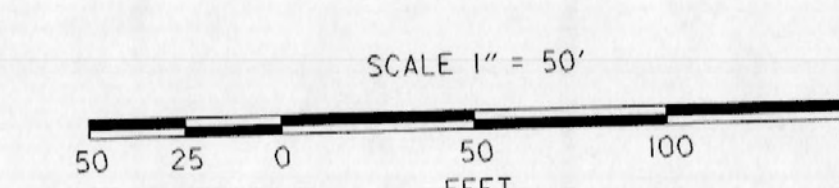
BEARINGS: Oregon Coordinate System 1983(91 adjustment) North zone.

COORDINATES: This drawing utilizes a Local Datum Plane (LDP) which is relative to the Oregon Coordinate System of 1983(91), North zone, with respect to the local latitude and ground elevation. The LDP coordinates define true ground distances. To convert the LDP coordinates, for the control points, to the Oregon Coordinate System of 1983(91), North zone, multiply the LDP coordinates by 0.999892383.

DRAWING 10B-22-23  
PROJECT NO. 7295

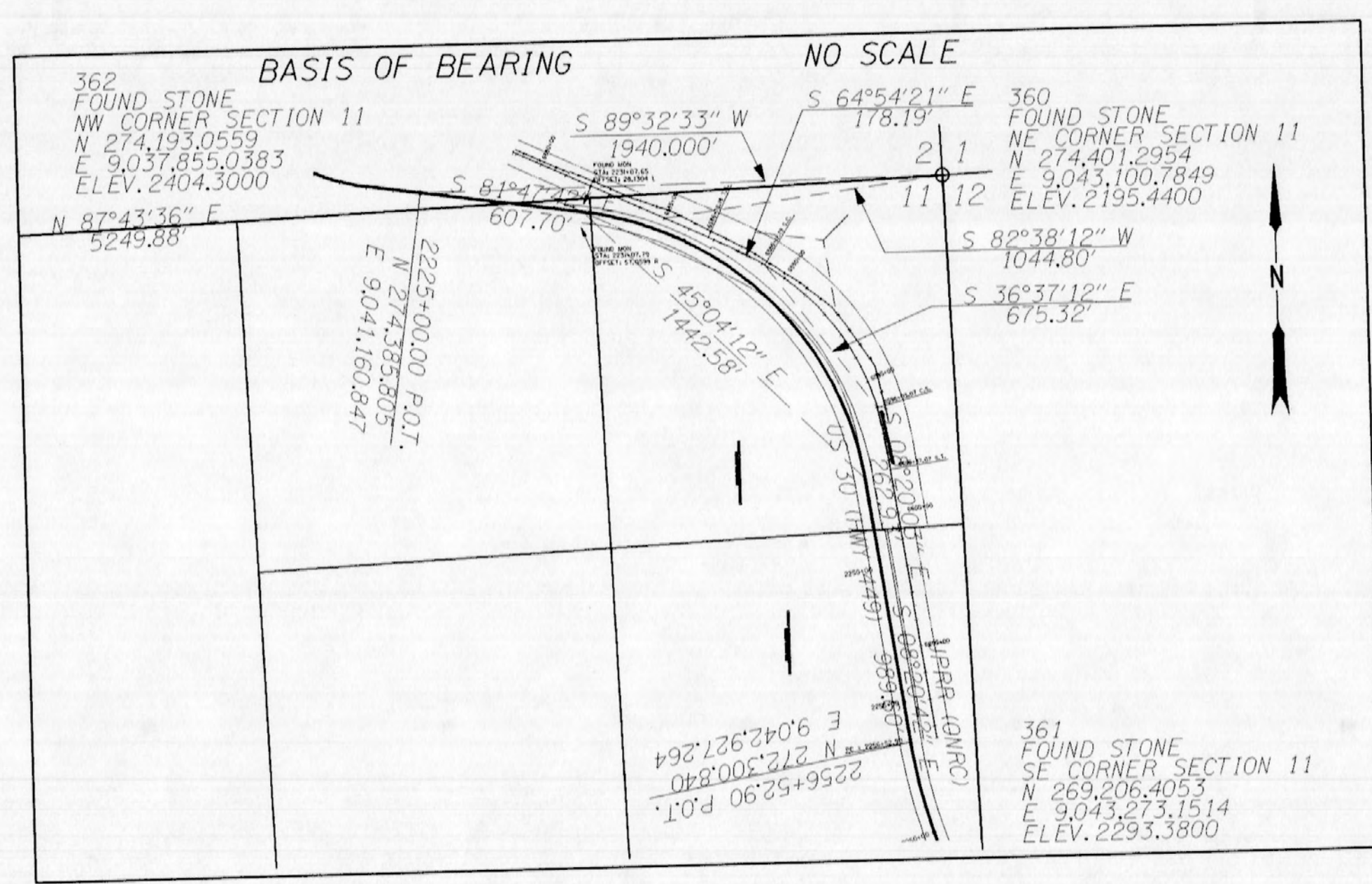
ACCESS CONTROL LINE

THIS IS THE FILE NAME LOCATION: 14116RW.dgn



17-OCT-2006

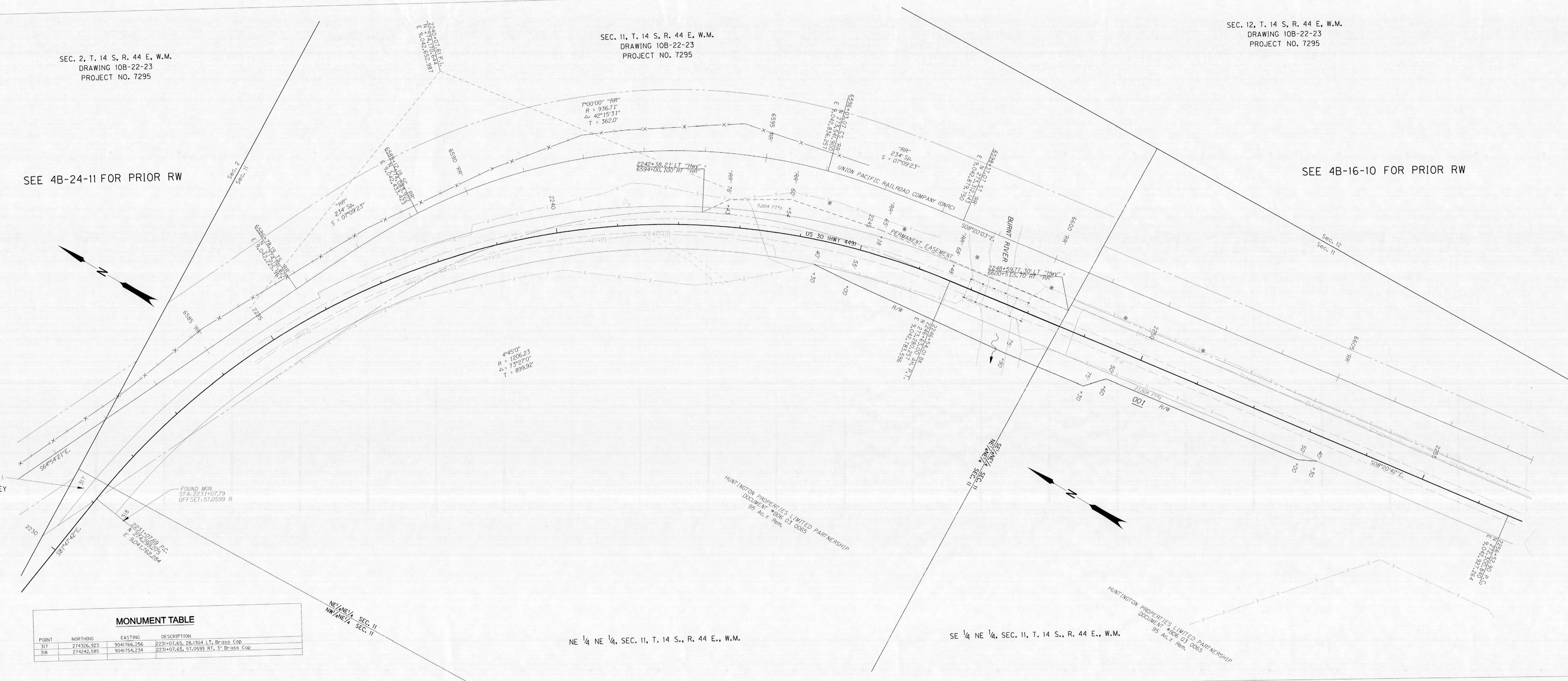
SEE COUNTY SURVEY 13-14-11 FOR CONTROL NETWORK, RECOVERY AND RETRACEMENT SURVEY



REVISION HISTORY		
DATE	NAME	DESCRIPTION
10/30/06	OWNERSHIP CHANGE	BLACK TO HUNTINGTON PROPERTIES LIMITED PARTNERSHIP

NETWORK & GPS POINTS		
POINT	NORTHING	EASTING
360	274401.2954	904300.7849
361	269006.4951	904321.1544
362	274933.0559	904385.0383
1025993	273763.7060	904645.5080
1005500	272641.2440	904840.0360

MONUMENT TABLE		
POINT	NORTHING	EASTING
317	274536.923	904766.256
318	274242.585	904154.234



SEC. 2, T. 14 S., R. 44 E., W.M.  
DRAWING 10B-22-23  
PROJECT NO. 7295

NE 1/4 NE 1/4, SEC. 11, T. 14 S., R. 44 E., W.M.

SE 1/4 NE 1/4, SEC. 11, T. 14 S., R. 44 E., W.M.

SEC. 12, T. 14 S., R. 44 E., W.M.  
DRAWING 10B-22-23  
PROJECT NO. 7295

SEE 4B-16-10 FOR PRIOR RW

SEE 4B-24-11 FOR PRIOR RW

US 30: BURNT RIVER HUNTINGTON SECTION  
HUNTINGTON HIGHWAY  
BAKER COUNTY  
LOCATED LINE  
SCALE 1"=50'  
DRAWING 10B-22-23  
PROJECT NO. 7295

ACTIVE COPY  
THE R/W SHOWN ON THIS MAP  
MAY BE REVISED TO  
SUPPORT PROJECT DESIGN  
CHANGES OR OTHER NEEDS  
RIGHT OF WAY ENGINEERING