

10  
PROJECT NO. R6181  
DRG. NO. 10B-3-33  
SCALE: 1" = 200'  
LOCATED LINE  
BAKER-COPPERFIELD HIGHWAY  
CLEAR CREEK BRIDGE #2838 SEC.

OREGON DEPARTMENT OF TRANSPORTATION  
Located Line

# CLEAR CREEK BRIDGE #2838 SEC.

BAKER-COPPERFIELD HIGHWAY

BAKER COUNTY

Scale: 1 inch = 50 feet

SEPTEMBER, 1992

Revised: March, 1993

BEARINGS BASED ON COUNTY SURVEY NO. 8-46-3,  
DATED FEB. 23, 1963, BAKER COUNTY, OREGON.

ASSUMED COORDINATES

FIELD NOTES: This drawing shows the results of an Oregon  
Department Of Transportation (ODOT) survey. The field survey  
notes, book number 3163, are available from ODOT files in  
Salem, Oregon.

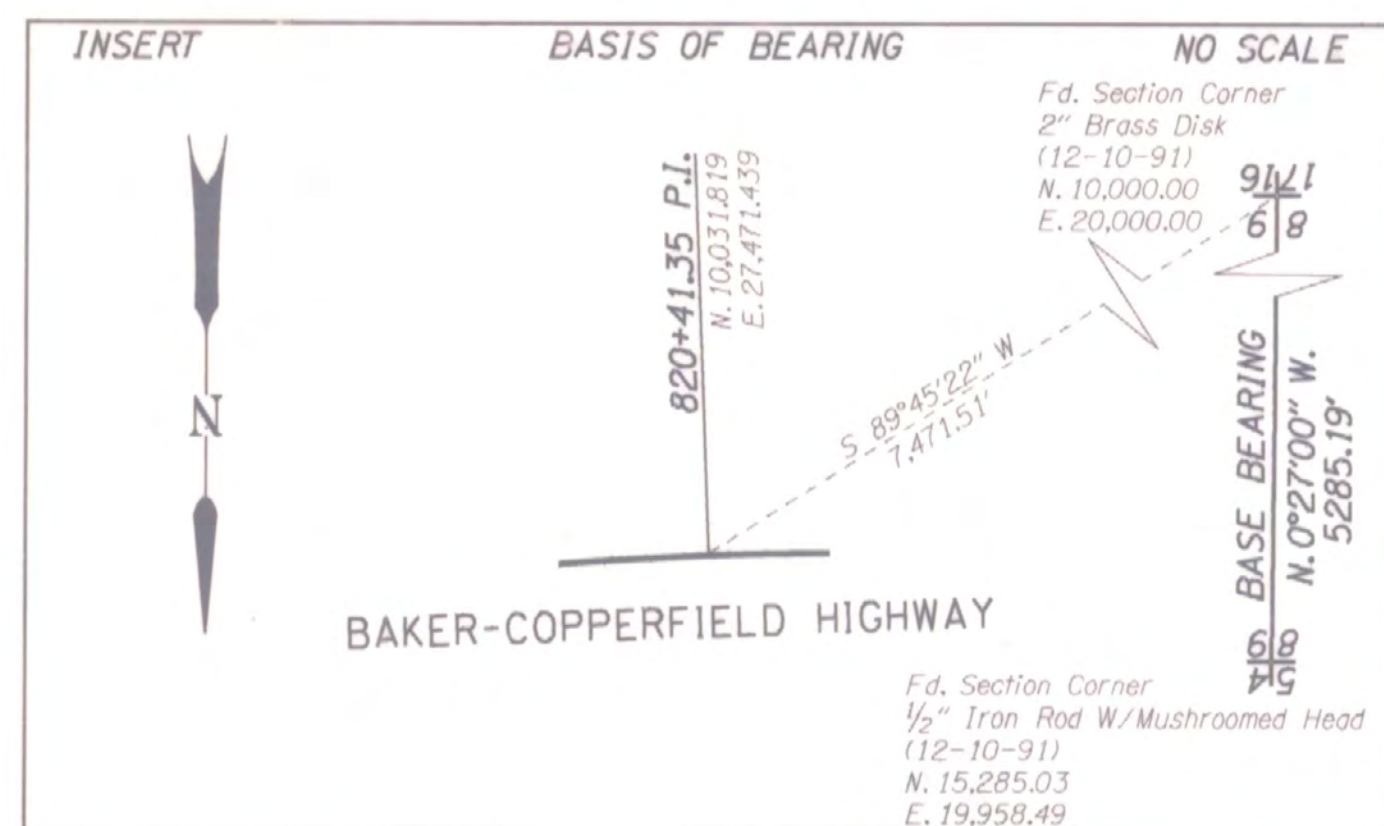
PROJECT NO. R6181

DRG. NO. 10B-3-33

ZF1:[370101]05922RW.DGN;1

25-SEP-1992

S.D.



T. 8 S., R. 46 E., W.M.  
DRG. NO. 10B-3-33  
PROJECT NO. R6181

O.M. & G.A. Matile et al  
80-45-008

D.O. West  
80-36-052

S. & F.J. Gulick et al  
81-02-020

0°42' C.R.  
TΔ 2°37'34"  
Ts 362.63'  
2-350' Sp.  
S 1°13'30"  
α 0.2

(Record)  
0°42' C.R.  
TΔ 3°02'45"  
Ts 392.63'  
2-350' Sp.  
S 1°13'30"  
α 0.2