

POWDER RIVER (MILES) BRIDGE SEC. MEDICAL SPRINGS HWY. LOC LINE SCALE: 1"=20' DRG NO 10C-25-17

OREGON STATE HIGHWAY DIVISION
LOCATED LINE
POWDER RIVER (MILES) BRIDGE SEC.
MEDICAL SPRINGS HIGHWAY
BAKER COUNTY

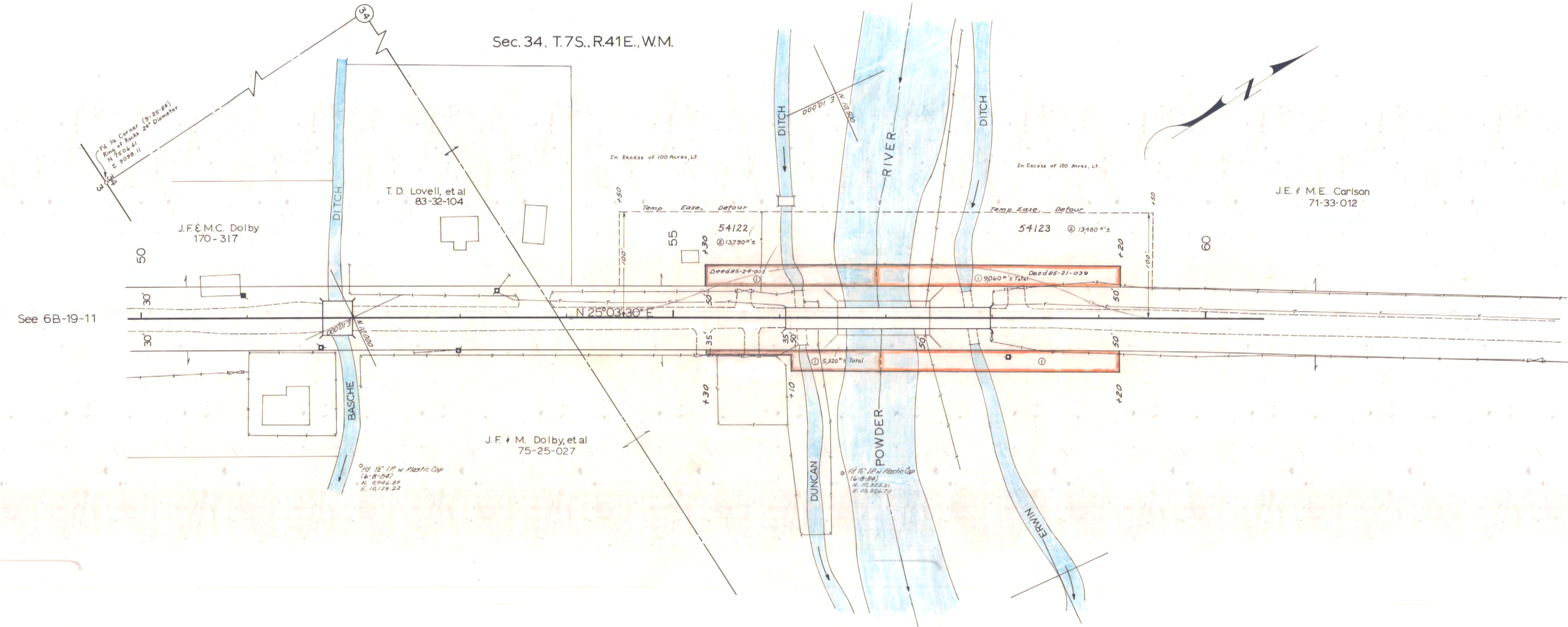
Scale: 1 inch=50 feet
Traced by V.C. Oct, 1984 Rev. April, 1985

Basis of Bearing: O.S.H.D. Survey Miles Bridge -
Missouri Flat Section (Map No.
6B-19-11) Dated March, 1946

Assumed Coordinates

DRG. No. 10C-52-17

THIS DRAWING WAS PREPARED FROM AN OREGON STATE HIGHWAY
DIVISION SURVEY. THE SURVEY TRANSIT NOTES ARE RETAINED IN
THE FILES AS FIELD BOOK NUMBER 3095.



POWDER RIVER (MILES) BRIDGE SEC.
MEDICAL SPRINGS HIGHWAY
BAKER COUNTY
SCALE: 1"=50'
DRG. NO. 10C-52-17

See 6B-19-11

POWDER RIVER (MILES) BRIDGE SEC. MEDICAL SPRINGS HWY. LOC LINE SCALE: 1"=20' DRG NO 10C-25-17