

BAKER COUNTY LOCATED LINE SCALE 1"=100' DRAWING 10B-SS-58 PROJECT NO. 1304
I-84: BURNT RIVER CANYON FREIGHT IMPROVEMENT SECTION
OLD OREGON TRAIL HIGHWAY
BAKER COUNTY
LOCATED LINE
SCALE 1"=100'
DRAWING 10B-SS-58
PROJECT NO. 1304

OREGON DEPARTMENT OF TRANSPORTATION
Located Line
I-84: BURNT RIVER CANYON FREIGHT IMPROVEMENT SECTION
OLD OREGON TRAIL HIGHWAY
BAKER COUNTY

DRAFTED BY Robert Butler, ODOT, May, 2007

BEARINGS: Oregon Coordinate System of 1983(98), north zone.

COORDINATES: This drawing utilizes a Local Datum Plane (LDP) which is relative to the Oregon Coordinate System of 1983(98), north zone, with respect to the local latitude and ground elevation. The LDP coordinates define true ground distances. To convert the LDP coordinates, for the control points, to the Oregon Coordinate System of 1983(98), north zone, multiply the LDP coordinates by 0.99985255.

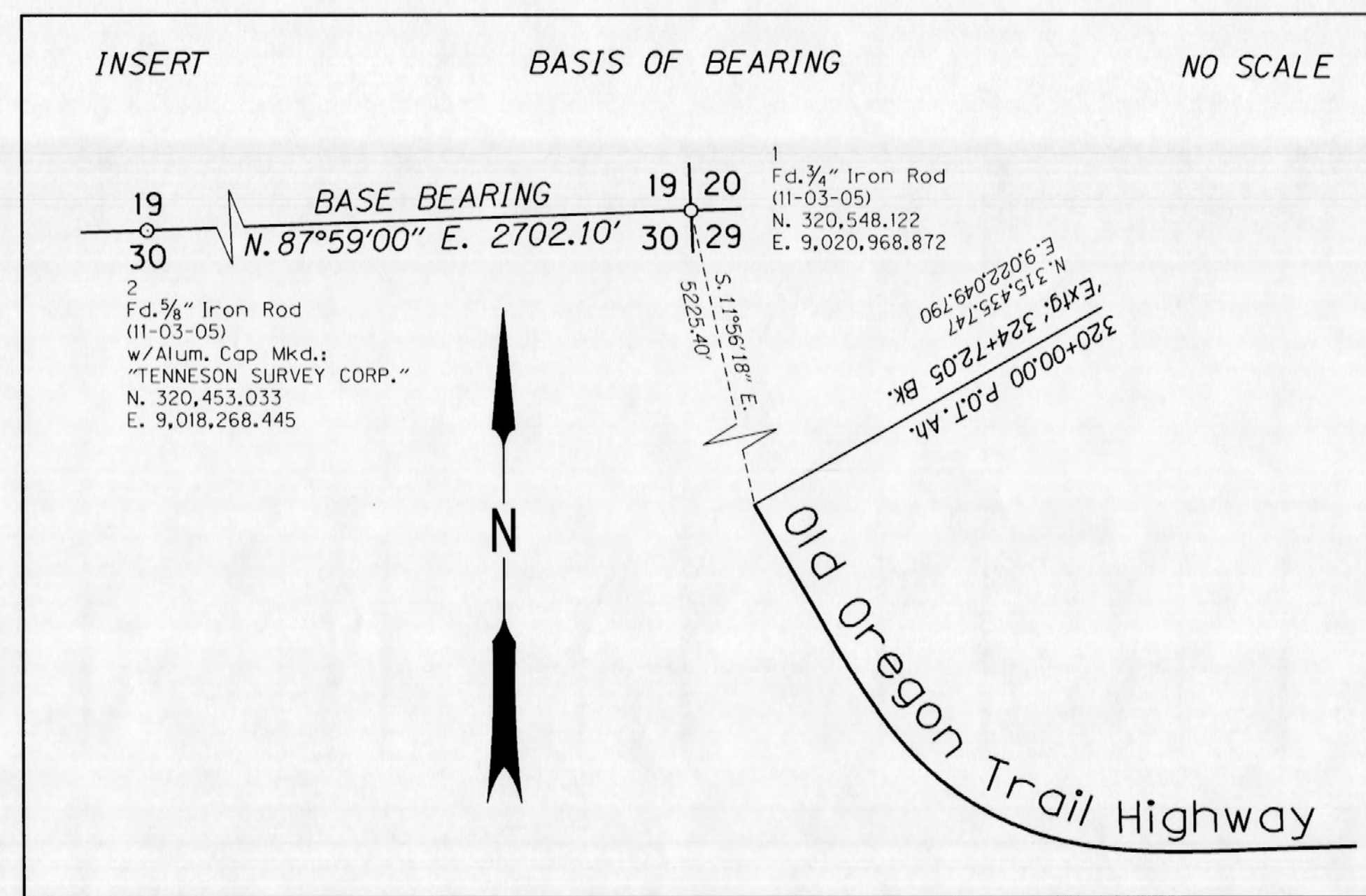
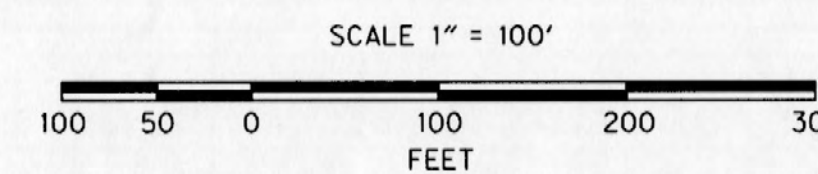
FIELD NOTES: This drawing shows the results of an Oregon Department of Transportation (ODOT) survey. The field survey notes are available from ODOT files in the Region 5 office in La Grande, Oregon.

DRAWING 10B-22-28
PROJECT NO. 7304

ACCESS CONTROL LINE

T:\ROW Project CAD Files\Active CAD Files\14163Burnt River Curve Correction\14163RW.dgn

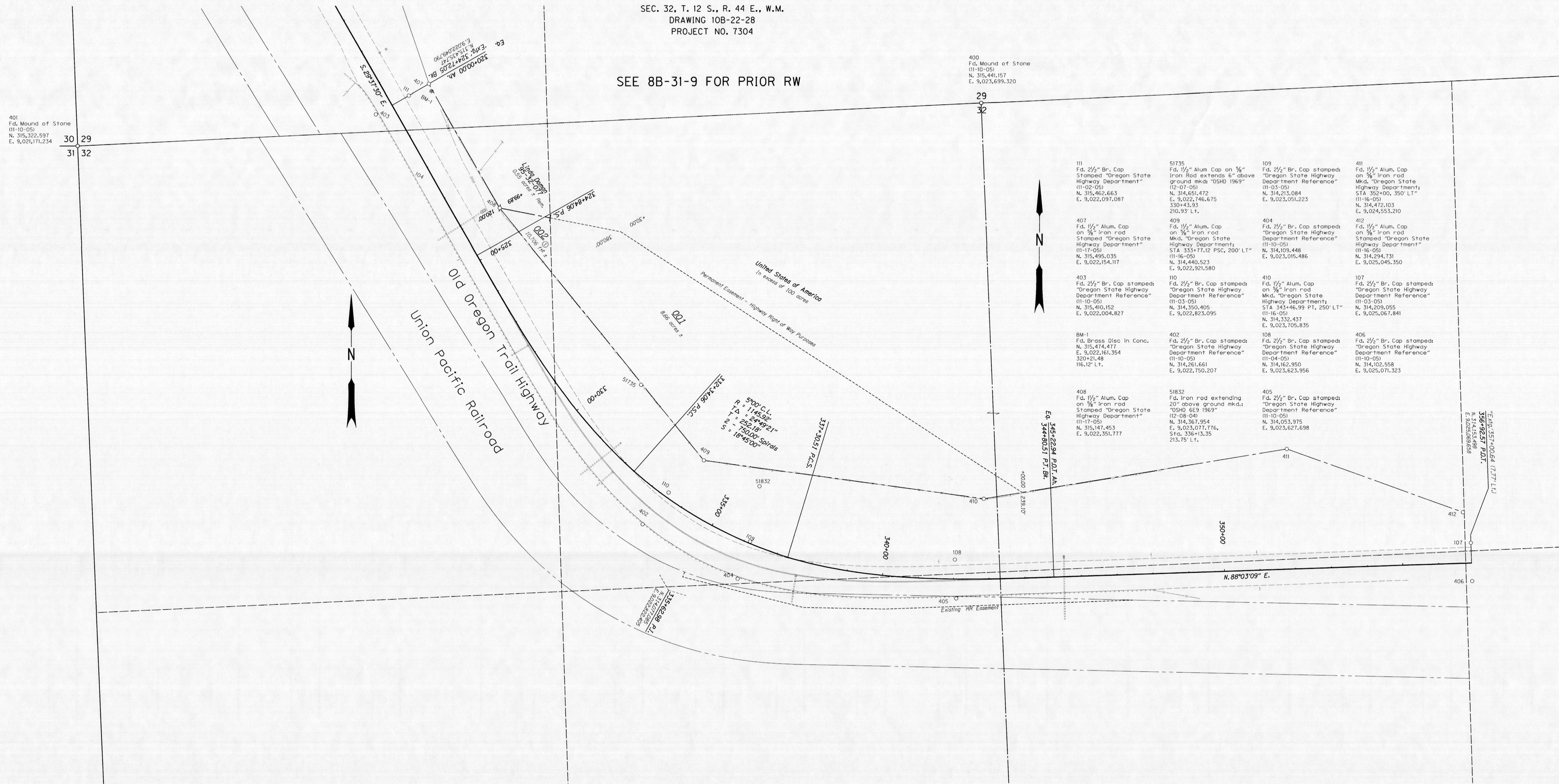
5/22/2007



REVISION HISTORY		
DATE	NAME	DESCRIPTION

ACTIVE COPY
THE R/W SHOWN ON THIS MAP
MAY LATER BE REVISED TO
SUPPORT PROJECT DESIGN
CHANGES OR OTHER NEEDS
RIGHT OF WAY ENGINEERING

R/W ENGINEERING
ORIGINAL
DO NOT REMOVE FROM FILE



ACTIVE COPY
THE R/W SHOWN ON THIS MAP
MAY LATER BE REVISED TO
SUPPORT PROJECT DESIGN
CHANGES OR OTHER NEEDS
RIGHT OF WAY ENGINEERING

I-84: BURNT RIVER CANYON FREIGHT IMPROVEMENT SECTION
OLD OREGON TRAIL HIGHWAY
BAKER COUNTY
LOCATED LINE
SCALE 1"=100'
DRAWING 10B-22-28
PROJECT NO. 7304

R/W ENGINEERING
ORIGINAL
DO NOT REMOVE FROM FILE