

086: POWDER RIVER BRIDGE SECTION
DRAWING 10B-20-1
PROJECT NO. 7098



OREGON DEPARTMENT OF TRANSPORTATION
Located Line

OR86: POWDER RIVER BRIDGE SECTION

BAKER - COPPERFIELD HIGHWAY
BAKER COUNTY

Scale: 1" = 50'
JULY, 2004

BEARINGS: Oregon Department of Transportation
Survey. See Drawing 6B-16-10 Dated August, 1945.

COORDINATES: Assumed Coordinates

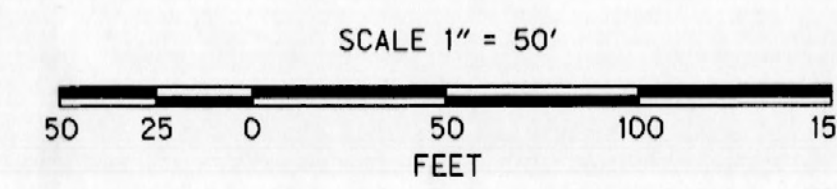
FIELD NOTES: This drawing shows the results of an Oregon
Department Of Transportation (ODOT) survey. The field survey
notes, book number 4188, are available from ODOT files in
La Grande, Oregon.

DRG. 10B-20-1
PROJECT NO. 7098

ACCESS CONTROL LINE

F:\ODOT_DATA\Projects\12796lovebr\12796rw.dgn

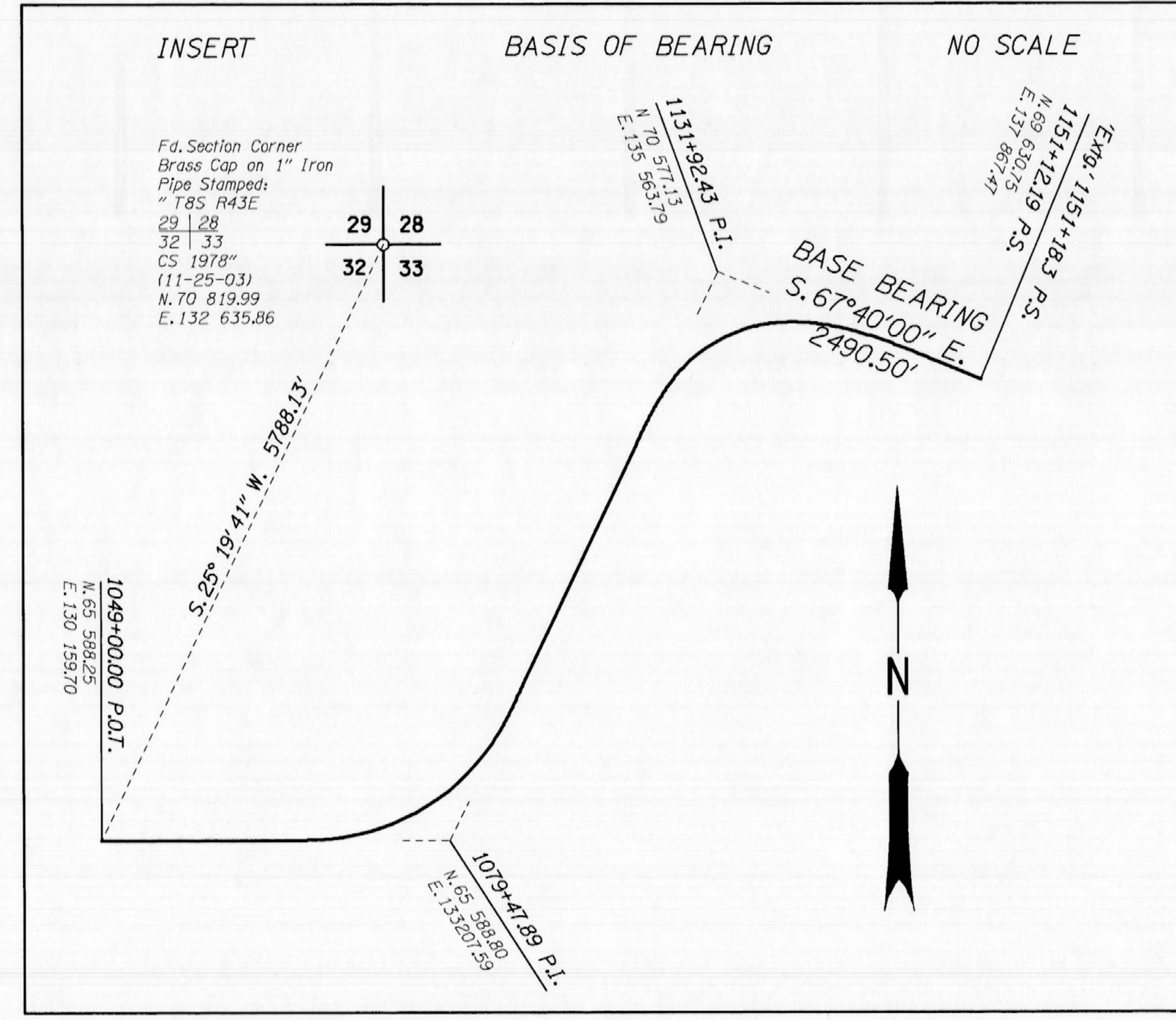
7/27/2004 REB



RELATIVE PROPERTY LINE LOCATIONS WERE
DETERMINED WITH THE FOLLOWING BAKER
COUNTY RECORD SURVEYS AND PLATS:

CS 8-43-1, Filed May 3, 1978

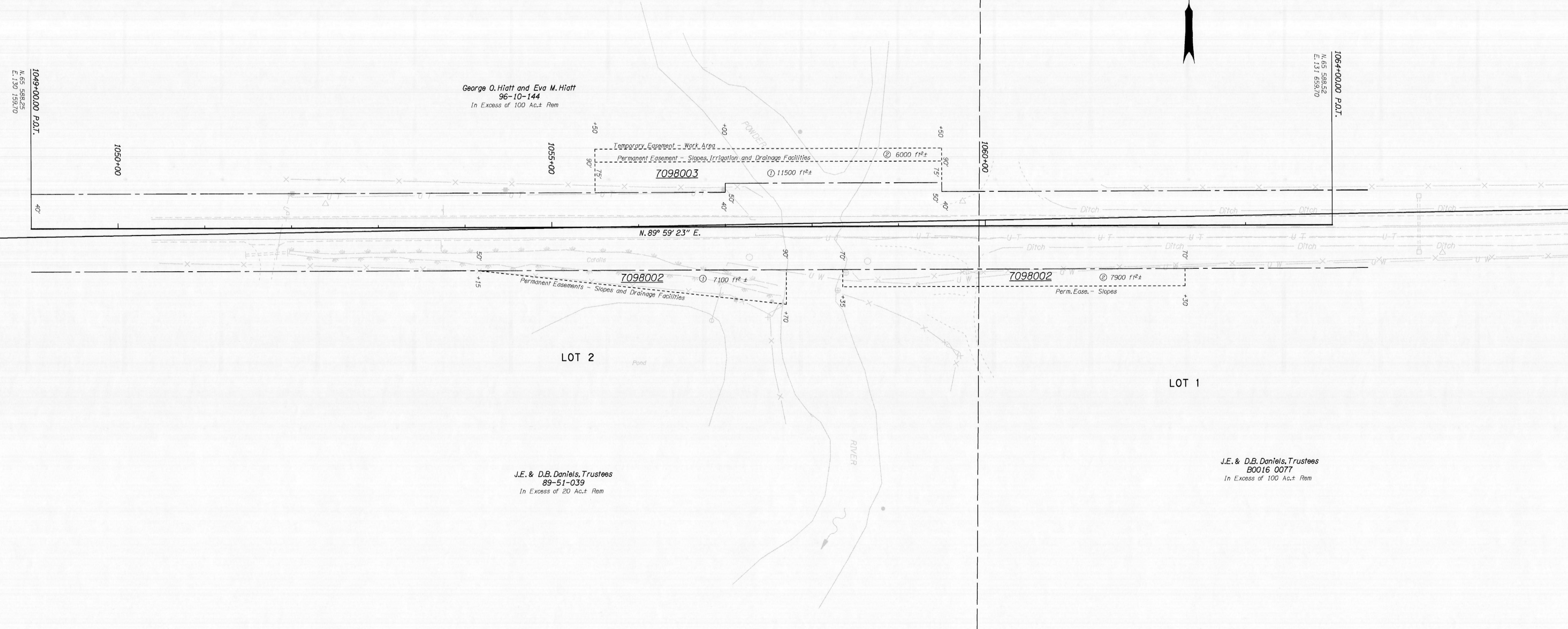
CS 9-44-9, Filed January 18, 1996



ACTIVE COPY
THE R/W SHOWN ON THIS MAP
MAY LATER BE REVISED TO
SUPPORT PROJECT DESIGN
CHANGES OR OTHER NEEDS
RIGHT OF WAY ENGINEERING

SE 1/4 SEC. 32, T. 8 S., R. 43 E., NE 1/4 SEC. 5 T. 9 S., R. 43 E., W.M.
DRAWING 10B-20-1
PROJECT NO. 7098

SEE 6B-16-10 FOR PRIOR RW



J.E. & D.B. Daniels, Trustees
80016 0077
In Excess of 100 Acs. Rem

J.E. & D.B. Daniels, Trustees
89-51-039
In Excess of 100 Acs. Rem

George O. Hight and Eva M. Hight
96-10-144
In Excess of 100 Acs. Rem

SE 1/4 SEC. 32, T. 8 S., R. 43 E., NE 1/4 SEC. 5 T. 9 S., R. 43 E., W.M.
DRAWING 10B-20-1
PROJECT NO. 7098

ACTIVE COPY
THE R/W SHOWN ON THIS MAP
MAY LATER BE REVISED TO
SUPPORT PROJECT DESIGN
CHANGES OR OTHER NEEDS
RIGHT OF WAY ENGINEERING



OR86: POWDER RIVER BRIDGE SECTION

BAKER - COPPERFIELD HIGHWAY

BAKER COUNTY

LOCATED LINE

SCALE: 1" = 50'

DRAWING 10B-20-1

PROJECT NO. 7098