

DEWEY AVE. (BAKER CITY) SEC. 1:500 10B-16-30 6993



OREGON DEPARTMENT OF TRANSPORTATION
Located Line
DEWEY AVE. (BAKER CITY) SEC.
WHITNEY HIGHWAY
BAKER COUNTY
Scale: 1:500
JUNE 2002

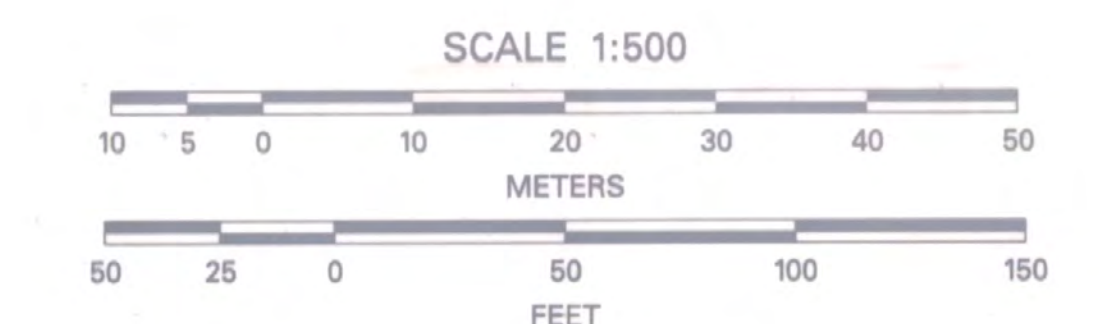
TRUE BEARINGS BASED ON SOLAR OBSERVATION TAKEN JUNE 20, 2001
BY OREGON DEPARTMENT OF TRANSPORTATION SURVEY.

ASSUMED COORDINATES

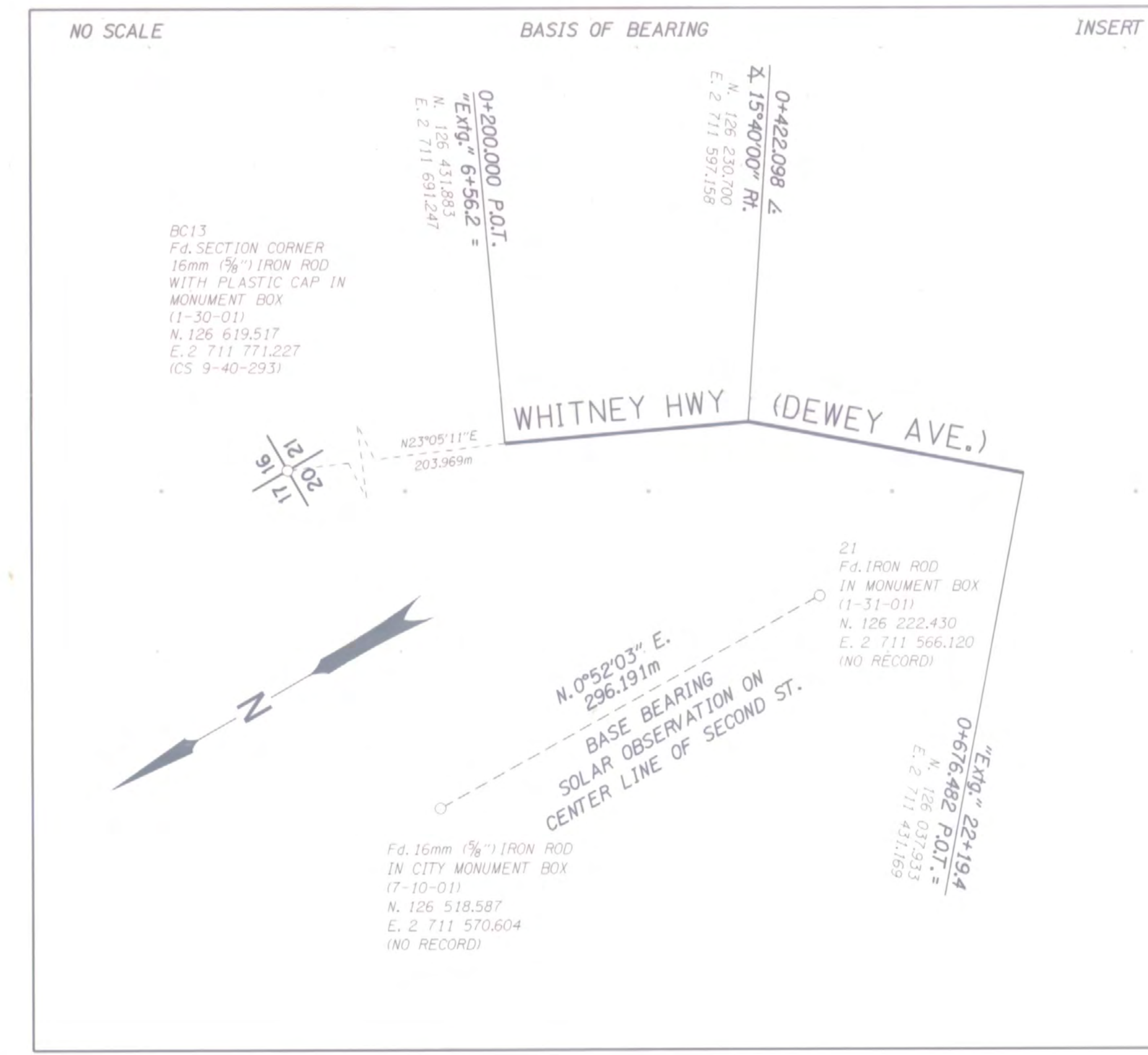
FIELD NOTES: This drawing shows the results of an Oregon
Department of Transportation (ODOT) survey. The field survey
notes, book number 3811, are available from ODOT files in
Salem, Oregon.

PROJECT NO. 6993
DRG. NO. 10B-16-30

C:\usr\Projects\10520.Dewey_St_Sec\10520rw.dgn 12-JUN-2002 SCC



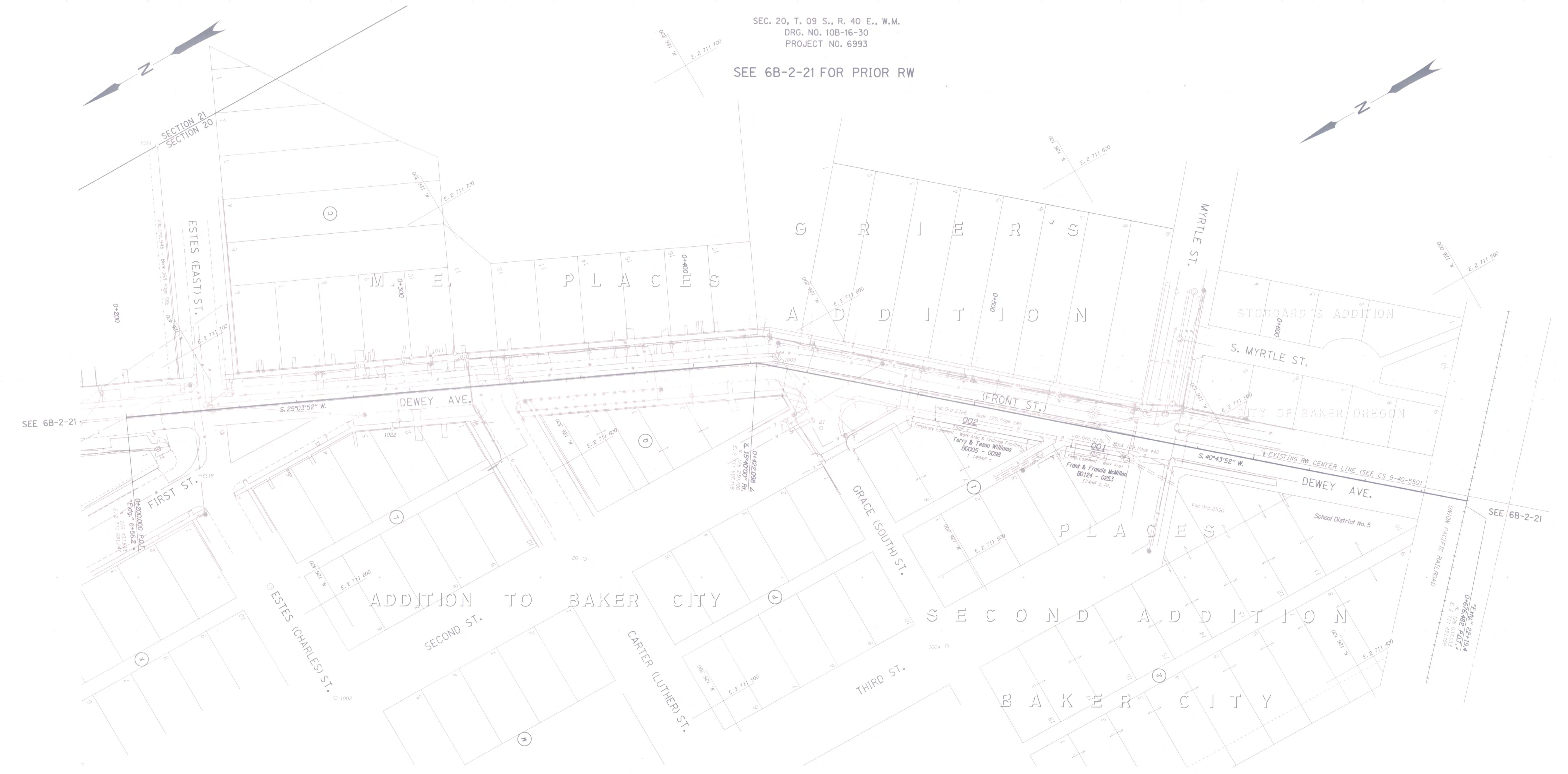
ACTIVE COPY
THE R/W SHOWN ON THIS MAP
MAY LATER BE REVISED TO
SUPPORT PROJECT DESIGN
CHANGES OR OTHER NEEDS
RIGHT OF WAY ENGINEERING



RELATIVE PROPERTY LINE LOCATIONS WERE DETERMINED WITH THE
FOLLOWING BAKER COUNTY RECORD SURVEYS AND SUBDIVISION PLATS:
PLAN OF M. E. PLACES ADDITION TO BAKER CITY - FILED, FEB. 17, 1873
PLACE'S SECOND ADDITION BAKER CITY - FILED, AUG. 26, 1890
GRIER'S ADDITION TO BAKER CITY, ORE. - NO RECORDING DATE
STODDARD'S ADDITION CITY OF BAKER OREGON - FILED, MAY 8, 1941
SURVEY OF THE E1/2 OF BLOCK 1, PLACES SECOND ADDITION,
CITY OF BAKER, BAKER COUNTY, OREGON BY PHILIP ANDERSON
- SURVEY DATE MAR. 1, 1949
SURVEY OF LOT 10 BLOCK "C" OF M.E. PLACE'S ADDITION TO BAKER,
OREGON BY JAMES D. HANLEY - SURVEY DATE MAY 26, 1954
SURVEY NO. 9-40-14 BC - FILED JAN. 20, 1955
SURVEY NO. 9-40-99 BC - FILED JUN. 16, 1977
SURVEY NO. 9-40-136 BC - FILED MAR. 13, 1979
SURVEY NO. 9-40-186 - FILED JUN. 2, 1982
SURVEY NO. 9-40-187 - FILED MAY 3, 1959
SURVEY NO. 9-40-293 - FILED NOV. 17, 1989
SURVEY NO. 9-40-298 - FILED JAN. 2, 1990
SURVEY NO. 9-40-438 - FILED JUL. 29, 1996
SURVEY NO. 9-40-550 - FILED JUN. 11, 2002

FOUND MONUMENT TABLE

1013 F.S. SECTION CORNER FROM 1/4-1/4 COR. RD. WITH PLASTIC CAP IN MONUMENT BOX 11-31-01 N. 128.412.509 E. 2 711 771.227 CS 9-40-293	1014 F.S. 1/4 COR. RD. IN CITY MONUMENT BOX 11-31-01 N. 128.412.509 E. 2 711 771.227 CS 9-40-293	1015 F.S. 1/4 COR. RD. IN CITY MONUMENT BOX 11-31-01 N. 128.412.509 E. 2 711 771.227 CS 9-40-293	1016 F.S. 1/4 COR. RD. IN CITY MONUMENT BOX 11-31-01 N. 128.412.509 E. 2 711 771.227 CS 9-40-293	1017 F.S. 1/4 COR. RD. IN CITY MONUMENT BOX 11-31-01 N. 128.412.509 E. 2 711 771.227 CS 9-40-293	1018 F.S. 1/4 COR. RD. IN CITY MONUMENT BOX 11-31-01 N. 128.412.509 E. 2 711 771.227 CS 9-40-293
1019 F.S. 1/4 COR. RD. IN CITY MONUMENT BOX 11-31-01 N. 128.412.509 E. 2 711 771.227 CS 9-40-293	1020 F.S. 1/4 COR. RD. IN CITY MONUMENT BOX 11-31-01 N. 128.412.509 E. 2 711 771.227 CS 9-40-293	1021 F.S. 1/4 COR. RD. IN CITY MONUMENT BOX 11-31-01 N. 128.412.509 E. 2 711 771.227 CS 9-40-293	1022 F.S. 1/4 COR. RD. IN CITY MONUMENT BOX 11-31-01 N. 128.412.509 E. 2 711 771.227 CS 9-40-293	1023 F.S. 1/4 COR. RD. IN CITY MONUMENT BOX 11-31-01 N. 128.412.509 E. 2 711 771.227 CS 9-40-293	1024 F.S. 1/4 COR. RD. IN CITY MONUMENT BOX 11-31-01 N. 128.412.509 E. 2 711 771.227 CS 9-40-293
1025 F.S. 1/4 COR. RD. IN CITY MONUMENT BOX 11-31-01 N. 128.412.509 E. 2 711 771.227 CS 9-40-293	1026 F.S. 1/4 COR. RD. IN CITY MONUMENT BOX 11-31-01 N. 128.412.509 E. 2 711 771.227 CS 9-40-293	1027 F.S. 1/4 COR. RD. IN CITY MONUMENT BOX 11-31-01 N. 128.412.509 E. 2 711 771.227 CS 9-40-293	1028 F.S. 1/4 COR. RD. IN CITY MONUMENT BOX 11-31-01 N. 128.412.509 E. 2 711 771.227 CS 9-40-293	1029 F.S. 1/4 COR. RD. IN CITY MONUMENT BOX 11-31-01 N. 128.412.509 E. 2 711 771.227 CS 9-40-293	1030 F.S. 1/4 COR. RD. IN CITY MONUMENT BOX 11-31-01 N. 128.412.509 E. 2 711 771.227 CS 9-40-293



ACTIVE COPY
THE R/W SHOWN ON THIS MAP
MAY LATER BE REVISED TO
SUPPORT PROJECT DESIGN
CHANGES OR OTHER NEEDS
RIGHT OF WAY ENGINEERING

DEWEY AVE. (BAKER CITY) SEC.
WHITNEY HIGHWAY
BAKER COUNTY
LOCATED LINE
SCALE: 1:500
DRG. NO. 10B-16-30
PROJECT NO. 6993



DEWEY AVE. (BAKER CITY) SEC. 1:500 10B-16-30 6993